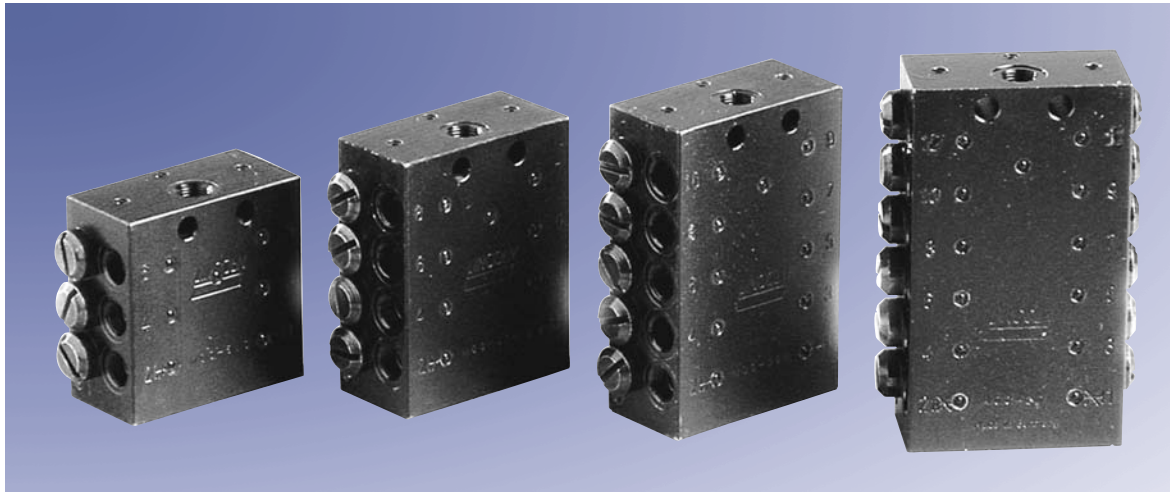


Multi-line and Progressive Systems

SSV Metering Devices



SSV Metering Devices

SSV progressive metering devices are piston-type metering devices which reliably dispense the lubricant volume fed to the inlet in predetermined single quantities.

By closing one outlet, the lubricant is fed to the next outlet below. This combining of outlets provides a large variety of metering possibilities. Additionally the internal porting avoids cumbersome external T-fittings. A special feature of the progressive metering device is that a previous feed line must supply lubricant before the next one can be

supplied. This makes the progressive system easy to visually or electrically monitor. It is available with 6 to 22 outlets and can be used for greases up to NLGI 2 or oils of at least 40 mm²/s.

Lincoln progressive metering devices in block design have no defect-prone rubber seals. They can therefore be used with no problem at high differential pressure (up to 100 bar between two outlets) and for a wide range of temperatures. The maximum operating pressure is 350 bar.

Advantages

- No rubber seals
- Single block design
- Internal combining of outlets
- Exact lubricant metering
- Easy to monitor
- Fault-free replacement: should a metering device be exchanged, connection and output or adjustment errors are avoided
- High operating pressure

Validated Environmental

Inlet Size: R 1/8" Female (BSPP)			Number of Outlets	Inlet Size: 1/8" NPT Female	
Carbon Steel	303 Stainless Steel (VA 1.4305)	316Ti Stainless Steel (VA 1.4571)		Carbon Steel	303 Stainless Steel (VA 1.4305)
619-26473-1	619-27471-1	619-27824-1	6	619-27121-1	619-27792-1
619-25730-2	619-27473-1	619-27825-1	8	619-26396-2	619-27796-1
619-26841-1	619-27475-1	619-27889-1	10	619-26844-1	619-27800-1
619-25731-2	619-27477-1	619-27900-1	12	619-26398-2	619-27804-1
619-28862-1	619-29063-1		14		
619-28863-1	619-29064-1		16		
619-28864-1	619-29065-1		18		
619-28865-1	619-29066-1		20		
619-28866-1			22		



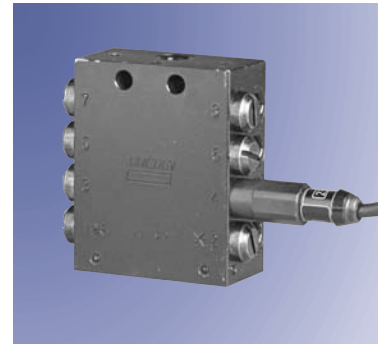
SSV6-K with Indicator Pin

Indicator Pin (K)

For Visual Monitoring

Inlet Size: R 1/8" Female (BSPP)			Number of Outlets	Inlet Size: 1/8" NPT Female	
Carbon Steel	303 Stainless Steel (VA 1.4305)	316Ti Stainless Steel (VA 1.4571)		Carbon Steel	303 Stainless Steel (VA 1.4305)
619-26474-3	619-27471-1	619-27824-1	6	619-27122-1	619-27793-1
619-25754-4	619-27473-1	619-27825-1	8	619-26646-2	619-27797-1
619-26842-2	619-27475-1	619-27889-1	10	619-26845-2	619-27801-1
619-25755-4	619-27477-1	619-27900-1	12	619-26648-2	619-27805-1
619-28871-1	619-29063-1		14	619-28899-1	
619-28872-1	619-29064-1		16	619-28900-1	
619-28873-1	619-29065-1		18	619-28901-1	
619-28874-1	619-29066-1		20	619-28902-1	
619-28875-1			22		

SSV-D Metering Devices



SSV8-N with Piston Detector

SSV with Piston Detector (N)

For Electrical Monitoring. Standard Cable Length: 3 m (10')

Inlet Size: G 1/8" Female (BSPP)		Number of Outlets	Inlet Size: 1/8" NPT Female
Carbon Steel	303 Stainless Steel (VA 1.4305)		
619-28257-1	619-29003-1	6	619-28653-1
619-28258-1		8	619-28654-1
619-28259-1	619-28529-1	10	
619-28260-1	619-29004-1	12	
619-28890-1		14	
619-28907-1		16	
619-28957-1		18	
619-28935-1		20	619-28937-1
619-29015-1		22	

Piston detector is also available with plug version – ask your Lincoln representative.

Technical Data

number of outlets	6 to 22
maximum operating pressure	350 bar (5076 psi)
maximum differential pressure	100 bar (1450 psi)
metered volume per outlet	
and per stroke	0.2 cm ³ (0.012 in ³)
outlet thread	M 10 x 1 (must use Lincoln outlet fittings)
materials available	<ul style="list-style-type: none"> • steel, surface zinc-iron-coated, black chromed • stainless steel (1.4305) • stainless/acid proof steel for SSV6-12 (1.4571)
operating temperature	-25 to 70° C (-13 to 158° F)

Note: Never close outlets 1 & 2!

Dimensions

No. of Outlets	Height	Width	Depth
6	60 mm (2.4 in)	60 mm (2.4 in)	30 mm (1.2 in)
8	75 mm (3.0 in)		
10	90 mm (3.6 in)		
12	105 mm (4.2 in)		
14	120 mm (4.8 in)		
16	135 mm (5.4 in)		
18	150 mm (6.0 in)		
20	165 mm (6.6 in)		
22	180 mm (7.2 in)		

SSV-D with Metering Screws



SSV-D metering devices are adjustable per outlet pair. The metering occurs within the metering block via metering screws that are available in different sizes. The output of the progressive metering device can be easily changed, even after installation.

One or more outlet pairs of the metering device can be internally combined to achieve greater lubricant requirements. The primary function of the SSV remains unchanged in the SSV-D.

The dimensions of the SSV-D metering device have been changed from the standard SSV in order to allow for the same

thread sizes. As a result, both metering device types use the same components such as piston detector and piston-side closure plugs.

The SSV-D offers greater metering range flexibility. The SSV-D can be integrated into systems using standard SSV metering devices.

- The adjustable SSV-D metering devices are available in the standard sizes from 6 to 22 outlets – using Lincoln's single-block technology.
- Metering screws can be pre-assembled or supplied as a separate set.



SSVD 12

- Metering screws per outlet pair are available in 10 sizes
0.08 cm³, 0.14 cm³, 0.2 cm³, 0.3 cm³, 0.4 cm³, 0.6 cm³, 0.8 cm³, 1.0 cm³, 1.4 cm³, and 1.8 cm³ per outlet and stroke.

Standard with G 1/8" BSPP inlet

Part No.	Description
649-29485-1	SSVD 6
649-29486-1	SSVD 8
649-29487-1	SSVD 10
649-29488-1	SSVD 12
649-29489-1	SSVD 14
649-29587-1	SSVD 16
649-29588-1	SSVD 18
649-29589-1	SSVD 20
649-29590-1	SSVD 22

Standard with piston detector

Part No.	Description
649-29495-1	SSVD 6-.-.....N
649-29496-1	SSVD 8-.-.....N
649-29497-1	SSVD 10-.-.....N
649-29498-1	SSVD 12-.-.....N
649-29499-1	SSVD 14-.-.....N
649-29611-1	SSVD 16-.-.....N
649-29612-1	SSVD 18-.-.....N
649-29613-1	SSVD 20-.-.....N
649-29614-1	SSVD 22-.-.....N

Metering device with outlets 1 & 2 together USA

Part No.	Description
649-29540-1	SSVD 6/5
649-29541-1	SSVD 8/7
649-29542-1	SSVD 10/9
649-29543-1	SSVD 12/11
649-29544-1	SSVD 14/13
649-29631-1	SSVD 16/15
649-29632-1	SSVD 18/17
649-29633-1	SSVD 20/19
649-29634-1	SSVD 22/21

Metering device with outlets 1 & 2 together

Part No.	Description
649-29490-1	SSVD 6/5
649-29491-1	SSVD 8/7
649-29492-1	SSVD 10/9
649-29493-1	SSVD 12/11
649-29494-1	SSVD 14/13
649-29591-1	SSVD 16/15
649-29592-1	SSVD 18/17
649-29593-1	SSVD 20/19
649-29594-1	SSVD 22/21

Standard with 1/8" NPT inlet USA

Part No.	Description
649-29535-1	SSVD 6
649-29536-1	SSVD 8
649-29537-1	SSVD 10
649-29538-1	SSVD 12
649-29539-1	SSVD 14
649-29627-1	SSVD 16
649-29628-1	SSVD 18
649-29629-1	SSVD 20
649-29630-1	SSVD 22

Standard with piston detector USA

Part No.	Description
649-29565-1	SSVD 6-.-.....N
649-29566-1	SSVD 8-.-.....N
649-29567-1	SSVD 10-.-.....N
649-29568-1	SSVD 12-.-.....N
649-29569-1	SSVD 14-.-.....N
649-29651-1	SSVD 16-.-.....N
649-29652-1	SSVD 18-.-.....N
649-29653-1	SSVD 20-.-.....N
649-29654-1	SSVD 22-.-.....N

Other versions are available on request

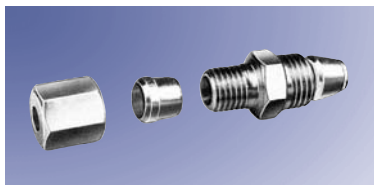
Dimensions

Model	Length	Width	Depth
SSVD 6	70 mm	60 mm	40 mm
SSVD 8	80 mm		
SSVD 10	100 mm		
SSVD 12	115 mm		
SSVD 14	130 mm		
SSVD 16	145 mm		
SSVD 18	160 mm		
SSVD 20	175 mm		
SSVD 22	190 mm		

Technical Data

number of outlets	6 to 22
inlet thread	R 1/8 or 1/8 NPTF
max. differential pressure between two outlets and the inlet	100 bar
max. pressure	350 bar
max. starting pressure	20 bar
metered volume per outlet and stroke in cm ³	0.08; 0.14; 0.2; 0.3; 0.4; 0.6; 0.8; 1.0; 1.4; 1.8
piston closure plug (piston detector)	M 11 x 1
outlet and metering screw thread	M 10 x 1
metering screws	0.08; 0.14; 0.2; 0.3; 0.4; 0.6; 0.8; 1.0; 1.4; 1.8

SSV and SSV-D Accessories



Check Valve, Threaded

Threaded Fittings

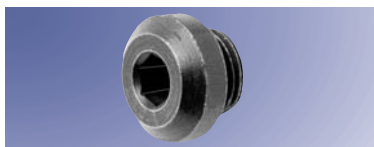
Part No.	Description
504-30345-2	check valve for 4 mm tube
504-30344-4	check valve for 6 mm tube
504-31709-1	check valve for 4 mm tube – stainless steel
504-31705-1	check valve for 6 mm tube – stainless steel



Check Valve, Quicklinc

Quicklinc – Plug-in Fittings

Part No.	Description
226-14091-4	check valve for 6 mm tube – high pressure (for primary metering devices)
226-14091-6	check valve for 4 mm tube – medium pressure (for secondary metering devices)
226-14091-2	check valve for 6 mm tube – medium pressure (for secondary metering devices)



Outlet Closure Plug

Other

Part No.	Description
303-17499-3	outlet closure plug M 10 x 1
303-19346-2	outlet closure plug M 10 x 1 - stainless steel
219-13798-3	o-ring for stainless steel closure plug*

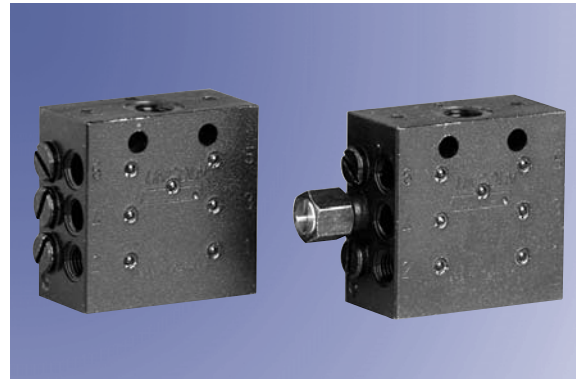
* Only required when closure plug does not seal

SSVM Metering Devices



SSVM metering devices offer similar benefits as the SSV, but are smaller in size and output. This makes the SSVM ideal for compact applications – little space and short distances.

They can be monitored visually or electronically depending on the options selected. They are available with 6 to 12 outlets and can be used for grease up to NLGI 2, or oil of at least 40 cSt.



SSVM

Standard

Inlet Size: G 1/8" Female (BSPP) Carbon Steel	Number of Outlets	Inlet Size: 1/8" NPT Female Carbon Steel
619-26761-1	6	619-26764-1
619-37044-1	8	619-26650-1
619-26846-1	10	619-26848-1
619-37049-1	12	619-26653-1

With Indicator Pin (K)

Inlet Size: G 1/8" Female (BSPP) Carbon Steel	Number of Outlets	Inlet Size: 1/8" NPT Female Carbon Steel
619-26762-3	6	619-26765-3
619-37045-3	8	619-26651-3
619-26847-2	10	619-26849-2
619-37050-3	12	619-26654-3

With Indicator Pin and Limit Switch (KS)

Inlet Size: G 1/8" Female (BSPP) Carbon Steel	Number of Outlets	Inlet Size: 1/8" NPT Female Carbon Steel
619-27078-1	6	
619-27079-1	8	
619-27080-1	10	
619-27081-1	12	

With Indicator Pin and Proximity Switch (KN)

Inlet Size: G 1/8" Female (BSPP) Carbon Steel	Number of Outlets	Inlet Size: 1/8" NPT Female Carbon Steel
619-27667-1	6	
619-27668-1	8	
619-27669-1	10	
619-27670-1	12	

With Indicator Pin and Adapter for Proximity Switch (KA)

Inlet Size: G 1/8" Female (BSPP) Carbon Steel	Number of Outlets	Inlet Size: 1/8" NPT Female Carbon Steel
619-27663-1	6	
619-27664-1	8	
619-27665-1	10	
619-27666-1	12	

Technical Data

number of outlets	6 to 12
maximum operating pressure	200 bar (2900 psi)
maximum differential pressure	40 bar (580 psi)
metered volume per outlet	0.07 cm ³ (0.0043 in ³)
outlet thread	M 8 x 1 (must use Lincoln outlet fittings)
materials available	steel, surface zinc-iron-coated, black chromed
operating temperature	-25 to 70° C (-13 to 158° F)

Note: Never close outlets 1 & 2!

Dimensions

No. of Outlets	Height	Width	Depth
6	48.5 mm (1.94 in)	50 mm (2.0 in)	25 mm (1.0 in)
8	60 mm (2.4 in)		
10	71.5 mm (2.86 in)		
12	83 mm (3.32 in)		

SSVM Accessories

Part No.	Description
threaded connections 519-31661-1	check valve for 4 mm tube
Quicklinc plug-in fittings 226-14091-5	check valve for 4 mm tube
other 303-17530-1 209-12464-7	outlet closure plug M 8 x 1 outlet copper washer for closure plug

SSV-FL

SSV Flanged Type Metering Device

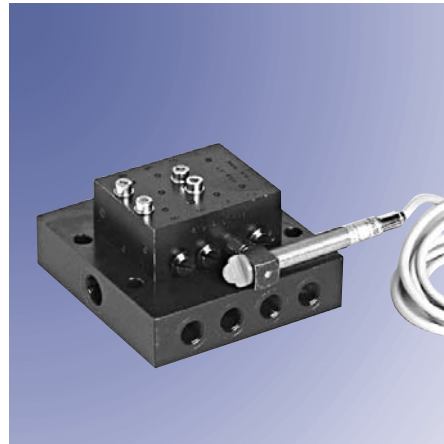


The SSV-FL is based on the standard SSV, flanged to a manifold block. Ideal for rigorous conditions such as those found in steel plants. This design allows for connections up to dia.10 mm tubing. Additionally, the metering devices can easily be exchanged during maintenance routines without having to disconnect lubricant lines – thus saving valuable time.

They can be monitored visually (SSV-FL-K) or electronically via a proximity switch (SSV-FL-KN). They are available with 1 to 12 outlets and can be used for grease up to NGLI 2 or oil of at least 40 cST.



SSV-FL10-K



SSV-FL8-KN

Models

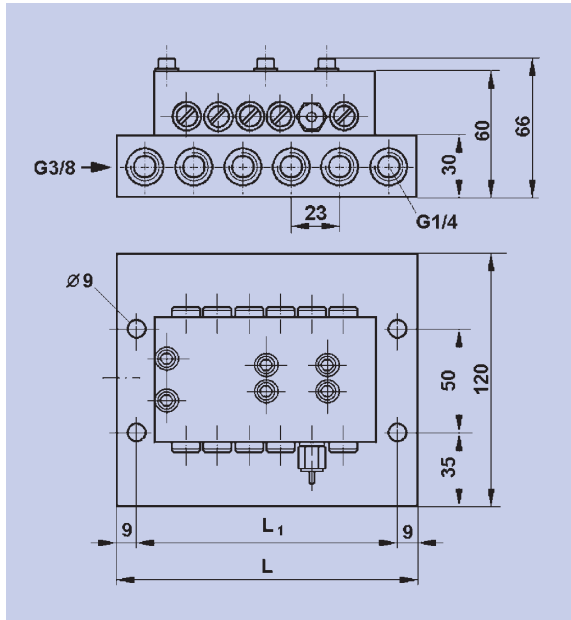
SSV-FL-K	Number of Outlets	SSV-FL-KN
619-40646-1	1	619-40678-1
619-40646-2	2	619-40678-2
619-40646-3	3	619-40678-3
619-40646-4	4	619-40678-4
619-40646-5	5	619-40678-5
619-40646-6	6	619-40678-6
619-40646-7	7	619-40678-7
619-40646-8	8	619-40678-8
619-40646-9	9	619-40678-9
619-40647-1	10	619-40679-1
619-40647-2	11	619-40679-2
619-40647-3	12	619-40679-3

Technical Information

number of outlets	1 to 12
maximum operating pressure	300 bar (4350 psi)
maximum differential pressure	100 bar (1450 bar)
metered volume per outlet and per stroke	0.2 cm ³ (0.012 in ³)
outlet thread	G 1/4 female (BSPP)
inlet thread	G 3/8 female (BSPP)
materials available	steel, surface zinc-iron-coated, black chromed
operating temperature	-25 to +70° C (-13 to 158° F)

SSV-FL

SSV Flanged Type Metering Device



Dimensions of SSV-FL

SSV-FL Accessories

Part No.	Description
223-13052-1	outlet check valve for 6 mm tube
223-13052-2	outlet check valve for 8 mm tube
223-13052-3	outlet check valve for 10 mm tube

Dimensions

No. of Outlets	Length	Width	Depth
1	97 mm (3.88 in)	120 mm (4.8 in)	66 mm (2.64 in)
2			
3			
4	112 mm (4.48 in)		
5	97 mm (3.88 in)		
6			
7	112 mm (4.48 in)		
8			
9	127 mm (5.08 in)		
10			
11	142 mm (5.68 in)		
12			