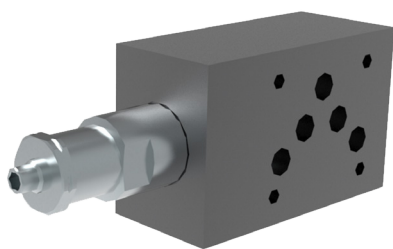


# VPN2-10/M(R)

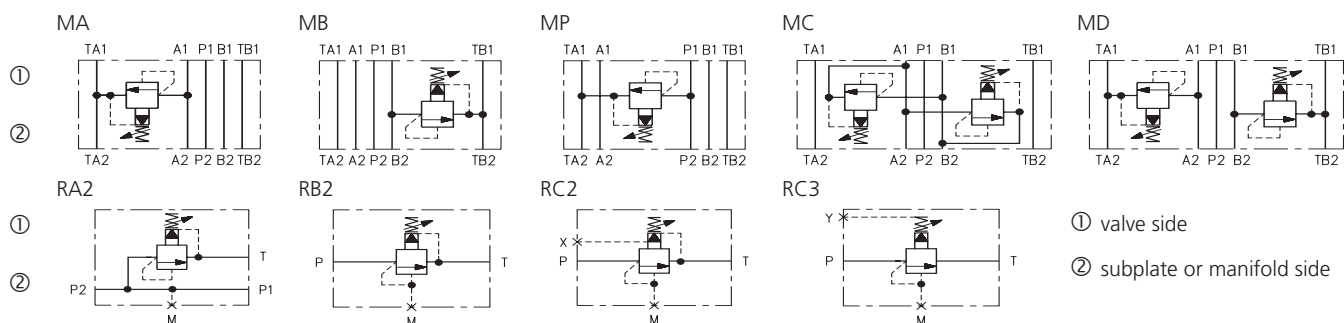
Size 10 (D05) •  $Q_{max}$  150 l/min (40 GPM) •  $p_{max}$  350 bar (5100 PSI)



## Technical Features

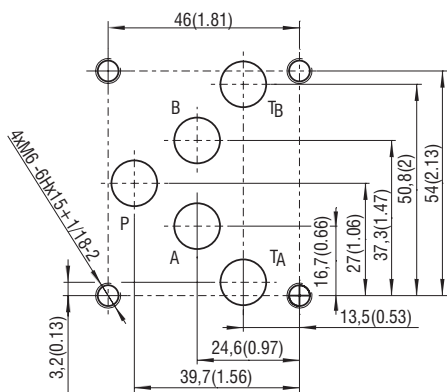
- › Pressure relief valve, spool type, pilot operated, with mounting interface acc. to ISO 4401, DIN 24340 (CETOP 05) or in-line design
- › Low hysteresis, accurate pressure control and low pressure drop
- › Wide pressure range up to 350 bar
- › High flow capacity
- › Hardened precision parts
- › Ideal for use as control valve where accuracy and repeatability is required
- › Adjustable by allen key or hand screw, optionally sealable (lockwire holes)
- › In the standard version, the valve housing is phosphated and steel parts are zinc-coated for 240 h protection acc. to ISO 9227

## Functional Symbols



Notice: The orientation of the symbol on the name plate corresponds with the valve function.

## ISO 4401-05-04-0-05



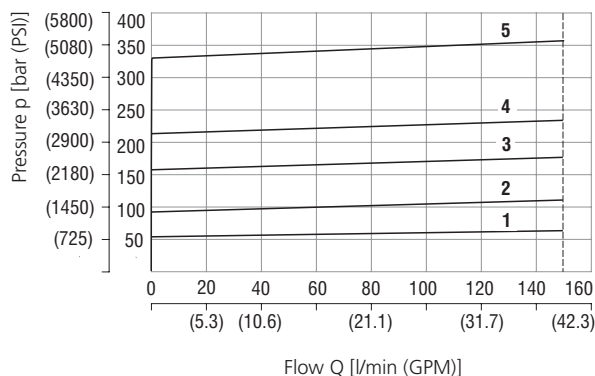
## Technical Data

Valve size	10 (D05)	
Max. flow	l/min (GPM)	150 (40)
Max. operating pressure	bar (PSI)	350 (5080)
Fluid temperature range (NBR)	°C (°F)	-30 ... +100 (-22 ... 212)
Fluid temperature range (FPM)	°C (°F)	-20 ... +120 (-4 ... 248)
Mass		
- models MA (B, P) 10	kg (lbs)	2.15 (4.74)
- models MC (D) 10		3.0 (6.61)
- models RA2, RB2, RC2 (3)		2.7 (5.95)

	Datasheet	Type
General information	GI_0060	Products and operating conditions
Mounting interface	SMT_0019	Size 10
Spare parts	SP_8010	

## Characteristics measured at $v = 32 \text{ mm}^2/\text{s}$ (156 SUS)

### Relief pressure related to flow rate



### Minimum set and circulation pressure

