

# AMGC-SERIES SINGLE- & DOUBLE-ACTING MANIFOLDS

MANIFOLD ASSEMBLY INCLUDES GAUGES AND FRAME FOR IMPROVED SAFETY



**ENERPAC** 



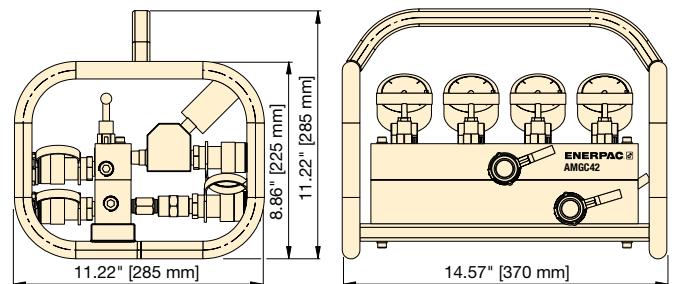
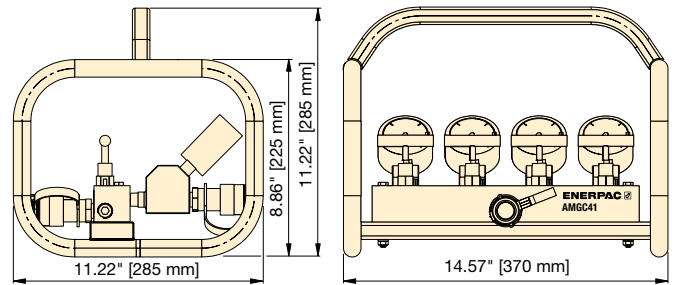
# 4-WAY MANIFOLD ASSEMBLY COMPLETE WITH GAUGES

- 4 x Glycerine filled, 10,000 psi gauges allow operators to work safely
- All protected by the robust protection frame
- Enerpac's CR400 female couplers on all ports allow the manifold to be quickly connected to up to 4 cylinders

▼ AMGC41



▼ Front and rear view AMGC42



Model Number	Advance		Retract		Weight	
	Inlet	Outlet	Inlet	Outlet	Lbs.	Kg.
AMGC41	1	4	-	-	23.8	10,8
AMGC42	1	4	1	4	38.3	17,4



**Enerpac Worldwide Locations**

For a complete list of addresses see: [www.enerpac.com/en/enerpac-locations](http://www.enerpac.com/en/enerpac-locations)  
 User Inquiries: 800-433-2766 Distributor Inquiries: 800-558-0530

[www.enerpac.com](http://www.enerpac.com)