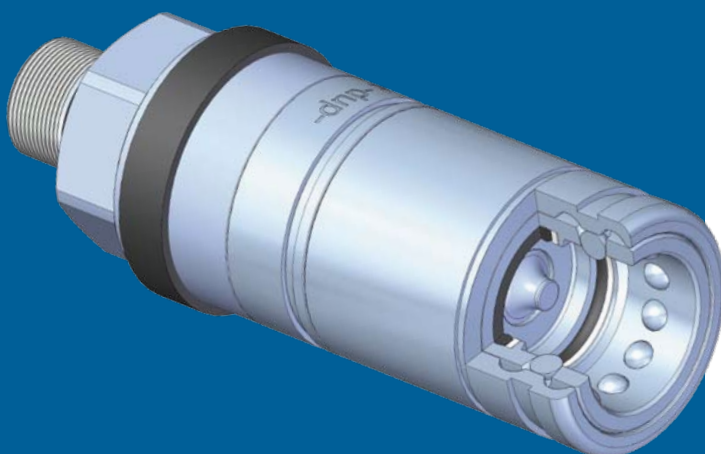


# PPK3



Nominal size				Max working pressure	Rated flow	Max flow rate	Min burst pressure			Fluid spillage
DNP	BG	ISO	mm				Male	Female	Coupled	
13	3	12.5	10,5	25 Mpa	45 l/min	90 l/min	See PPV	130 MPa	120 MPa	2,7 cc

## Caratteristiche tecniche

- Norma: ISO 7241-1 A
- Ghiera: doppia azione
- Occlusione: valvola
- Aggancio: sfere radiali
- Materiale: acciaio
- Finitura: Zn-Fe (Cr III)
- Filettature: BSP – NPT – SAE – METRICHE
- Guarnizioni standard: NBR
- Temperatura d'esercizio: -25 °C +100 °C
- Guarnizioni opzionali: FKM, EPDM o altro
- Pressioni di esercizio: 250 bar
- Connessione in pressione: consentita (solo lato maschio)
- Massima pressione residua: 250 bar

## Technical data

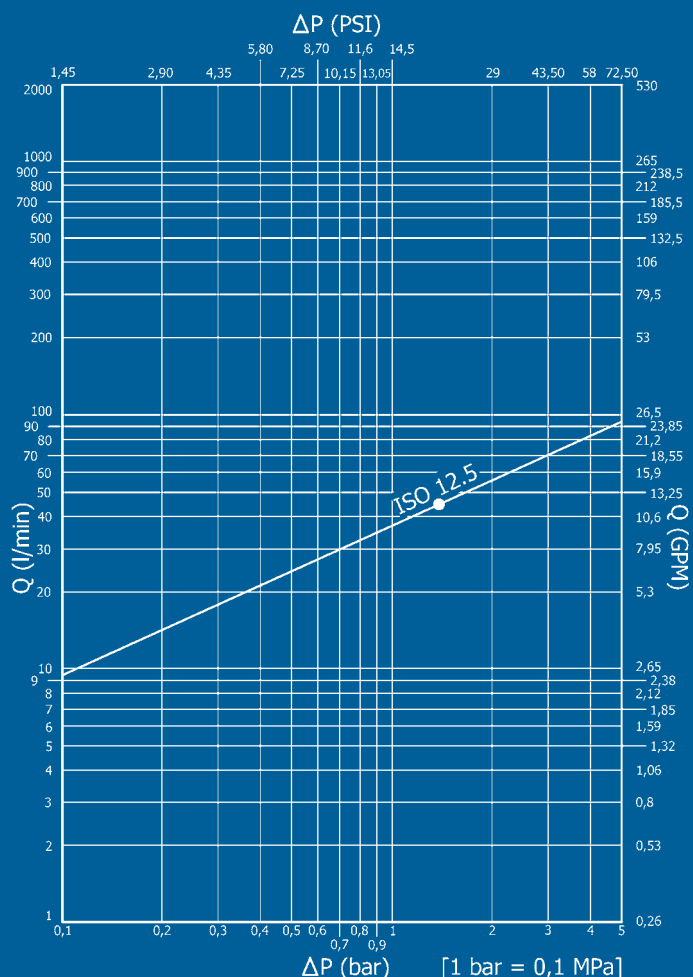
- Standard: ISO 7241-1 A
- Sleeve: double acting
- Occlusion: poppet
- Locking: radial balls
- Material: steel
- Finishing: Zn-Fe (Cr III)
- Threads: BSP – NPT – SAE – METRICS
- Standard seals: NBR
- Working temperature: -25 °C +100 °C
- Optional seals: FKM, EPDM or more
- Working pressure: 250 bar
- Connection under pressure: allowed (male side only)
- Max residual pressure: 250 bar

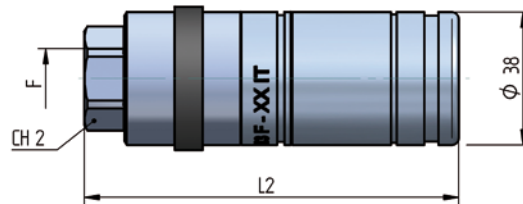
## Technische Merkmale

- Norm: ISO 7241-1 A
- Hülse: doppelwirkend
- Verschluss: ventil
- Kupplung: Radialkugeln
- Werkstoff: Stahl
- Ausführung: Zn-Fe (Cr III)
- Gewinde: BSP – NPT – SAE – METRISCHE
- Standard-Dichtungen: NBR
- Betriebstemperatur: -25 °C +100 °C
- Dichtungen nach Wahl: FKM, EPDM, usw.
- Betriebsdruck: 250 bar
- Kuppeln unter Druck: erlaubt (nur Steckerseite)
- Max. Restdruck: 250 bar

## Caracteristiques techniques

- Norme: ISO 7241-1 A
- Douille: double action
- Obturation: clapet
- Accrochage: billes radiales
- Matériel: acier
- Traitement: Zn-Fe (Cr III)
- Taraudage: BSP – NPT – SAE – METRIQUES
- Joints standard: NBR
- Température de service: -25 °C +100 °C
- Joints facultatifs: FKM, EPDM, ect.
- Pression de service: 250 bar
- Connexion sous pression: possible (seulement côté male)
- Pression restante max: 250 bar



**PPK3 DN13 - BG 3 - ISO 12.5**


THREADS	CH2	L2	L4	ØT	F	STANDARD	FEMMINA - FEMALE - MUFFE - FEMELLE		
							COD. F	Weight (g)	Packaging (pcs.)
<b>IG 1</b>	27	107,3			BSP 1/2"	DIN 3852-2-X	PPK3.1313.112	575	35
	27	107,3			NPT 1/2"	ANSI B1.20.3	PPK3.1313.012	577	35
<b>IG 2</b>	27	107,3			3/4"-16 UNF 2B	SAE J 1926-1	PPK3.1319.032	578	35
	30	109,3			7/8"-14 UNF 2B	SAE J 1926-1	PPK3.1323.032	591	35
	32	111,3			1"1/16-14 UNF 2B	SAE J 1926-1	PPK3.1327.032	577	35
<b>AG 1</b>	32	112,5	14		BSP 1/2"	DIN 3852-2-A	PPK3.1313.212	556	35
	32	113,3	14		M18x1,5	ISO 6149-2	PPK3.1318.222	560	35
	32	111,5	15		M22x1,5	ISO 6149-2	PPK3.1322.222	554	35
	32	107,5	11,1		3/4"-16 UNF 2A	SAE J 1926-3	PPK3.1319.332	576	35
	32	113,7	12,7		7/8"-14 UNF 2A	SAE J 1926-3	PPK3.1323.332	586	35
	32	110,8	15,1		1"1/16 -12UN 2A	SAE J 1926-3	PPK3.1327.332	564	35
<b>AG 6</b>	32	110,3	14		M22x1,5	DIN 3852-11-E	PPK3.1322.312	547	35
<b>AG 4</b>	32	108,6	12,8		13/16-16 UN 2A	SAE J 1453	PPK3.1320.532	593	35
<b>AGS 4</b>	32	136,6	40,6		1" -14 UNS 2A	SAE J 1453	PPK3.1325.532	645	35
	32	138,6	41,7		1"3/16-12 UN 2A	SAE J 1453	PPK3.1330.532	695	35
<b>AG 5</b>	32	110,3	12		BSP 3/8"	DIN 3852-2-A	PPK3.1310.712	546	35
	32	111,5	14		M22x1,5	DIN 3852-1-A	PPK3.1322.712	556	35
<b>AGS 1</b>	32	132,8	35		BSP 3/8"	DIN 3863-U	PPK3.1310.752	573	35
	32	132,5	35		BSP 1/2"	DIN 3863-U	PPK3.1313.752	586	35
	32	130,7	35		BSP 5/8"	DIN 3863-U	PPK3.1322.752	579	35
<b>AG 2</b>	32	112,5	16,7		3/4"-16 UNF 2A	SAE J 514	PPK3.1319.302	569	35
	32	115,1	19,3		7/8"-14 UNF 2A	SAE J 514	PPK3.1323.302	556	35
	32	117	22		1"1/16-14 UNF 2A	SAE J 514	PPK3.1327.302	569	35
<b>AGS 2</b>	32	133,5	37,6		3/4"-16 UNF 2A	SAE J 514	PPK3.1319.502	578	35
	32	137	41,1		7/8"-14 UNF 2A	SAE J 514	PPK3.1323.502	598	35
<b>AG 3</b>	32	107,8	12	12S	M20x1,5	ISO 8434-1-S	PPK3.1320.402	545	35
<b>AGS 3</b>	32	121,5	26	12L	M18x1,5	ISO 8434-1-L	PPK3.1318.502	555	35
	32	123,5	27	15L	M22x1,5	ISO 8434-1-L	PPK3.1322.502	599	35
	32	123,5	27	12S	M20x1,5	ISO 8434-1-S	PPK3.1320.602	581	35
	32	124,5	29	16S	M24x1,5	ISO 8434-1-S	PPK3.1324.602	585	35
<b>AGS 5</b>	32	134,8	39		M22x1,5	DIN 7463	PPK3.1322.902	570	35

THREADS

