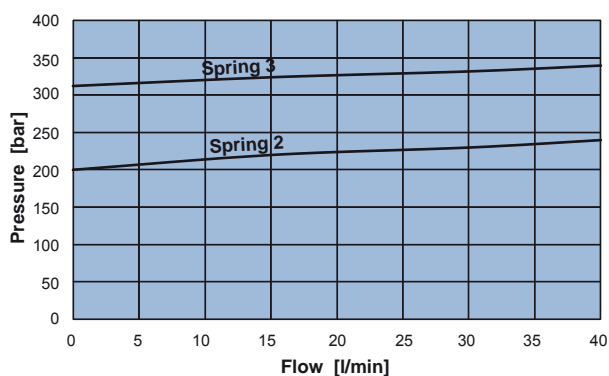
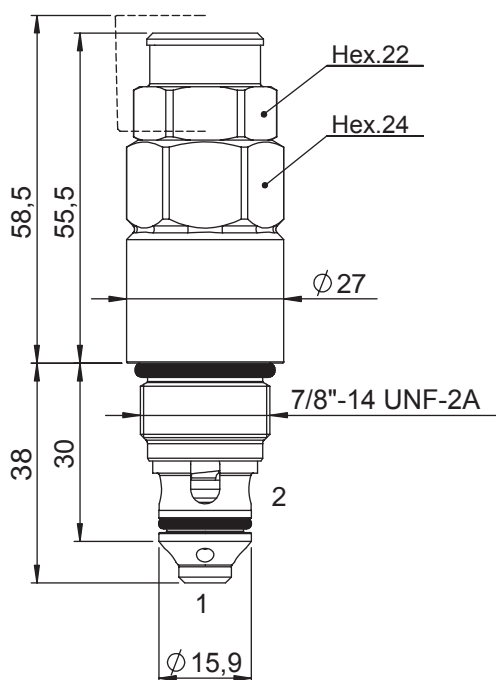
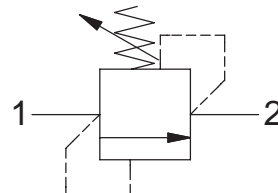


DIRECT ACTING RELIEF VALVE

- Flow 40 l/min
- Max working pressure 410 bar
- Seals NBR e PTFE
- Cavity C23200 (Long)
- Cartridge tightening torque 50 Nm
- Weight 0,23 Kg
- Tamper proof cap cod. 9021030190



9

Note:
This cartridge must be installed in to the SAE 10/2 long cavity, according the specifications of C232000 pag. 14.01.004.

Ordering code

00233 0000

SPRINGS	1	2	3
Setting range min.-max. [bar]	40 - 140	120 - 250	220 - 410
Pressure Increase [bar/by turn]	23	31	53
Standard setting 4 l/min [bar]	50	150	250

