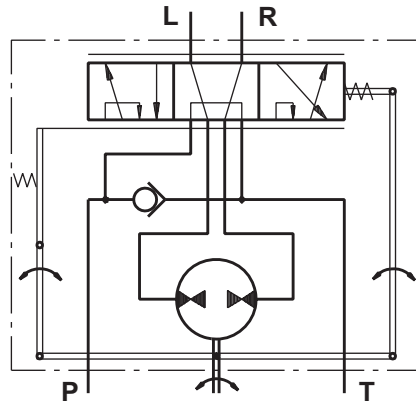


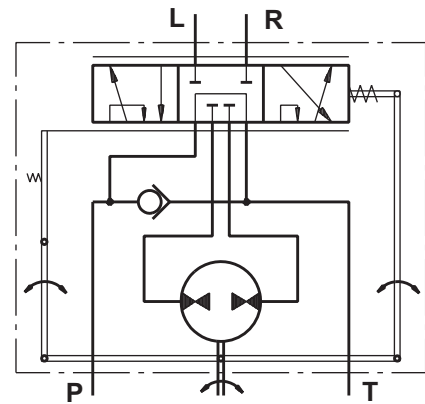
# HYDROSTATIC STEERING UNITS TYPE HKU.../3, 4



The newly designed HKU steering units, with radial distribution, incorporate two rotary tracing valves in the housing, which turn on the metering pump.



"Open Center - Load Reaction"  
Version 3 - HKU.../3



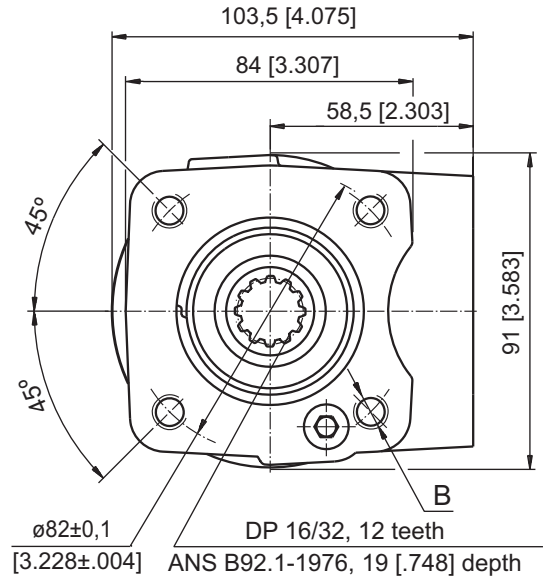
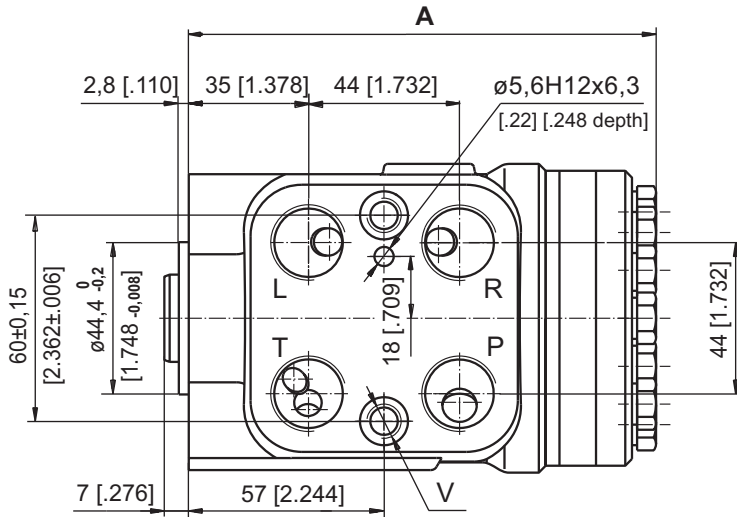
"Open Center - Non Load Reaction"  
Version 4 - HKU.../4

## SPECIFICATION DATA

Parameters	HKU																
	40/3	50/3	63/3	80/3	100/3	125/3	160/3	200/3	250/3	320/3	400/3						
	HKU	HKU	HKU	HKU	HKU	HKU	HKU	HKU	HKU	HKU	HKU	HKU	HKU	HKU	HKU	HKU	
	40/4	50/4	63/4	80/4	100/4	125/4	160/4	200/4	250/4	320/4	400/4	500/4	630/4	800/4	1000/4		
Displacement	cm <sup>3</sup> /rev	39,6	49,5	65,6	79,2	99,0	7,56	9,67	198	247,5	316,8	396	495	623,6	793	990	
	[in <sup>3</sup> /rev]	[2.42]	[3.0]	[4.0]	[4.83]	[6.04]	[123,8]	[158,4]	[12.1]	[15.1]	[19.3]	[24.2]	[30.2]	[38.05]	[48.4]	[60.4]	
Rated Flow*	lpm	4	5	6	8	10	13	16	20	25	32	40	50	63	70		
	[GPM]	[1.1]	[1.3]	[1.6]	[2.1]	[2.6]	[3.4]	[4.2]	[5.3]	[6.6]	[8.4]	[10.6]	[13.2]	[16.6]	[18.5]		
Rated Pressure	bar	140			170								140		100		
	[PSI]	[2030]			[2465]								[2030]		[1450]		
Max. Cont. Pressure in Line T	bar [PSI]																
	- standard	25 [363]															
- high pressure (H option)	40 [580]																
Max. Torque at Servoamplifying	Nm [lb-in]											3,0 [26]					
	- with standard springs											3,0 [26]					
- with soft springs (LT option)											1,8 [16]						
Max. Torque w/o Servoamplifying	Nm [lb-in]	120															
	[1065]																
Weight	kg	5,3	5,4	5,5	5,6	5,7	5,8	6,0	6,3	6,5	7,0	7,4	8,0	8,7	9,6	10,6	
	[lb]	[11.7]	[11.9]	[12.2]	[12.4]	[12.6]	[12.8]	[13.2]	[13.9]	[14.3]	[15.4]	[16.3]	[17.6]	[19.2]	[21.2]	[23.4]	
Dimension A	mm	130,85	132,2	133,9	136,2	138,8	142,2	146,8	152,2	158,8	168,2	178,8	192	209,3	232,2	258,6	
	[in]	[5.1]	[5.20]	[5.27]	[5.36]	[5.47]	[5.60]	[5.78]	[5.99]	[6.25]	[6.62]	[7.04]	[7.56]	[8.24]	[9.14]	[10.18]	

\* Inlet flow providing maximum speed of rotation:  
 - 100 RPM - from HKU40 to HKU630;  
 - 87 RPM - for HKU800;  
 - 70 RPM - for HKU1000.

**DIMENSIONS AND MOUNTING DATA - HKU.../3, 4, 7**



Code	Ports - P, T, R, L Thread	Column Mounting Thread - B	Valve Mounting Thread - V
-	G1/2 17 [.67] depth	4 x M10 18 [.71] depth	2 x M10x1 16 [.63] depth
M	M22x1,5 17 [.67] depth	4 x M10 18 [.71] depth	2 x M10x1 16 [.63] depth
A	3/4 - 16 UNF O-ring 17 [.67] depth	4 x 3/8 - 16 UNC 15,7 [.62] depth	2 x 3/8 - 24 UNF 14,2 [.56] depth
BA*	9/16 - 18 UNF O-ring 17 [.67] depth	4 x 3/8 - 16 UNC 15,7 [.62] depth	2 x 3/8 - 24 UNF 14,2 [.56] depth

\* These threads are for displacements from HKU40 to HKU200 only.

# STEERING

## UNITS

### ORDER CODE

	1	2	3	4	5	6	7	8
<b>HKU</b>		/		-				

**Pos.1 - Displacement code** (see Specification Data)

<b>40</b>	-	39,6	[2.42]	cm <sup>3</sup> /rev	[in <sup>3</sup> /rev]
<b>50</b>	-	49,5	[3.00]	cm <sup>3</sup> /rev	[in <sup>3</sup> /rev]
<b>63</b>	-	65,6	[4.00]	cm <sup>3</sup> /rev	[in <sup>3</sup> /rev]
<b>80</b>	-	79,2	[4.83]	cm <sup>3</sup> /rev	[in <sup>3</sup> /rev]
<b>100</b>	-	99,0	[6.04]	cm <sup>3</sup> /rev	[in <sup>3</sup> /rev]
<b>125</b>	-	123,8	[7.56]	cm <sup>3</sup> /rev	[in <sup>3</sup> /rev]
<b>160</b>	-	158,4	[9.67]	cm <sup>3</sup> /rev	[in <sup>3</sup> /rev]
<b>200</b>	-	198,0	[12.10]	cm <sup>3</sup> /rev	[in <sup>3</sup> /rev]
<b>250</b>	-	247,5	[15.10]	cm <sup>3</sup> /rev	[in <sup>3</sup> /rev]
<b>320</b>	-	316,8	[19.30]	cm <sup>3</sup> /rev	[in <sup>3</sup> /rev]
<b>400</b>	-	396,0	[24.20]	cm <sup>3</sup> /rev	[in <sup>3</sup> /rev]
<b>500</b>	-	495,0	[30.20]	cm <sup>3</sup> /rev	[in <sup>3</sup> /rev]
<b>630</b>	-	623,6	[38.05]	cm <sup>3</sup> /rev	[in <sup>3</sup> /rev]
<b>800</b>	-	793,0	[48.40]	cm <sup>3</sup> /rev	[in <sup>3</sup> /rev]
<b>1000</b>	-	990,0	[60.40]	cm <sup>3</sup> /rev	[in <sup>3</sup> /rev]

**Pos.2 - Versions**

<b>3</b>	-	Version 3 "Open Center - Load Reaction"
<b>4</b>	-	Version 4 "Open Center - Non Load Reaction"
<b>7</b>	-	Version 7 "Closed Center - Non Load Reaction"

**Pos.3 - Ports**

omit	-	BSPP (ISO 228)
<b>M</b>	-	Metric (ISO 262)
<b>A</b>	-	SAE (ANSI B 1.1 - 1982)
<b>BA*</b>	-	SAE (ANSI B 1.1 - 1982)

**Pos.4 - Max. Cont. Pressure in line T**

omit	-	Standard
<b>H</b>	-	High pressure

**Pos.5 - Input torque**

omit	-	Standard
<b>LT*</b>	-	Low

**Pos.6 - Noise level**

omit	-	Standard
<b>LN**</b>	-	Low

**Pos.7 - Option (Paint)\*\*\***

omit	-	No Paint
<b>P</b>	-	Painted Low Gloss Color
<b>PC</b>	-	Corrosion Protected Paint

**Pos.8 - Design Series**

omit	-	Factory specified
------	---	-------------------

**Notes:** \* Available only for displacement from 40 to 200.  
 \*\* Available only for versions 3 and 4 with displacement from 40 to 200.  
 \*\*\* Colour at customer's request.

The steering units are mangano-phosphatized as standard.

### ORDER CODE

	1	2	3	4	5	6	7	8	9
<b>HKUS</b>		/		-		-			

**Pos.1 - Displacement code** (see Specification Data)

<b>40</b>	-	39,6	[2.42]	cm <sup>3</sup> /rev	[in <sup>3</sup> /rev]
<b>50</b>	-	49,5	[3.00]	cm <sup>3</sup> /rev	[in <sup>3</sup> /rev]
<b>63</b>	-	65,6	[4.00]	cm <sup>3</sup> /rev	[in <sup>3</sup> /rev]
<b>80</b>	-	79,2	[4.83]	cm <sup>3</sup> /rev	[in <sup>3</sup> /rev]
<b>100</b>	-	99,0	[6.04]	cm <sup>3</sup> /rev	[in <sup>3</sup> /rev]
<b>125</b>	-	123,8	[7.56]	cm <sup>3</sup> /rev	[in <sup>3</sup> /rev]
<b>160</b>	-	158,4	[9.67]	cm <sup>3</sup> /rev	[in <sup>3</sup> /rev]
<b>200</b>	-	198,0	[12.10]	cm <sup>3</sup> /rev	[in <sup>3</sup> /rev]
<b>250</b>	-	247,5	[15.10]	cm <sup>3</sup> /rev	[in <sup>3</sup> /rev]
<b>320</b>	-	316,8	[19.30]	cm <sup>3</sup> /rev	[in <sup>3</sup> /rev]
<b>400</b>	-	396,0	[24.20]	cm <sup>3</sup> /rev	[in <sup>3</sup> /rev]
<b>500</b>	-	495,0	[30.20]	cm <sup>3</sup> /rev	[in <sup>3</sup> /rev]

**Pos.2 - Versions**

<b>3</b>	-	Version 3 "Open Center - Load Reaction"
<b>4</b>	-	Version 4 "Open Center - Non Load Reaction"
<b>8</b>	-	Version 8 "Open Center - Non Load Reaction"

**Pos.3 - Relief Valve Pressure Settings, bar**

**80, 100, 125, 150, 170**

**Pos.4 - Ports**

omit	-	BSPP (ISO 228)
<b>A</b>	-	SAE (ANSI B 1.1 - 1982)
<b>M</b>	-	Metric (ISO 262)

**Pos.5 - Max. Cont. Pressure in line T**

omit	-	Standard
<b>H</b>	-	High pressure

**Pos.6 - Input torque**

omit	-	Standard
<b>LT*</b>	-	Low

**Pos.7 - Noise level**

omit	-	Standard
<b>LN*</b>	-	Low

**Pos.8 - Option (Paint)\*\***

omit	-	No Paint
<b>P</b>	-	Painted Low Gloss Color
<b>PC</b>	-	Corrosion Protected Paint

**Pos.9 - Design Series**

omit	-	Factory specified
------	---	-------------------

Version	Manual Steering Check Valve	Relief Valve	Inlet Check Valve	Cylinder Relief Valve	Anti-Cavitation Valve
3	•	•	•		•
4	•	•	•	•	•
8	•	•	•		

**Notes:** \* Available only for displacement from 40 to 200.  
 \*\* Colour at customer's request.

The steering units are mangano-phosphatized as standard.