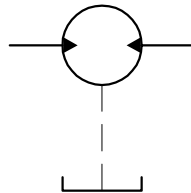


*drain connection
($P_{drain} < 0,5 \text{ bar}$)
(Always connect directly
to the tank)*

Symbol



Type for 4xØ9:
20MR...X546F

Type	Displacement q, [cm ³]	Pressure P _{max} , [bar]	Speed n, [min ⁻¹]	Dimensions							
				A	B	Inlet			Outlet		
						E	F	d	E	F	d
				mm	mm	mm	mm	mm	mm	mm	
20MR6,3X546	6,3	200	650...3500	44	83±0,1	30,2±0,1	13,1±0,1	M6-6H	30,2±0,1	13,1±0,1	M6-6H
20MR8,2X546	8,2	200	650...3500	45,5	85,9±0,1						
20MR10X546	10	200	650...3500	47	89±0,1						
20MR11X546	11	200	650...3500	48	91,1±0,1	39,7±0,1	19±0,1	M8-6H	39,7±0,1	19±0,1	M8-6H
20MR12X546	12	200	650...3500	48,6	92,3±0,1						
20MR14X546	14	200	650...3500	50	95,4±0,1						
20MR15X546	15	200	650...3500	51	96,9±0,1						
20MR16X546	16	200	650...3500	52	98,6±0,1						
20MR19X546	19	180	650...2500	54	103,5±0,1						
20MR22X546	22	180	650...2500	57	108,5±0,1	30,2±0,1	13,1±0,1	M6-6H	30,2±0,1	13,1±0,1	M6-6H
20MR25X546	25	160	650...2000	59,2	113,4±0,1						
20MR14X546A	14	200	650...3500	50	95,4±0,1						