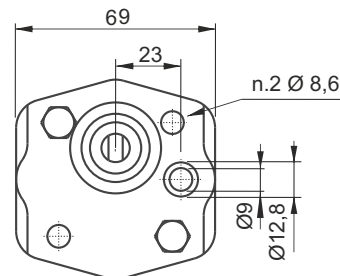
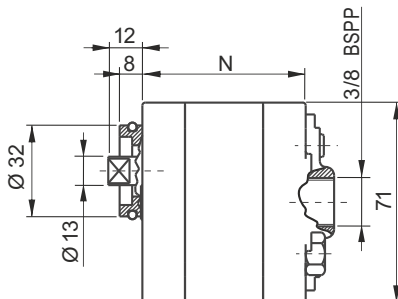


SECTION C

H TYPE GEAR PUMPS, GROUP 1



Main features

Oil temperature	-15 ÷ +80 °C
Inlet pressure	0,7 < P < 3,0 bar (absolute pressure)
Fixing bolts	2 x M8 8.8 class steel tightening torque: 21 ÷ 25 Nm
Pressure definition	Peak pressure: cycle 2 s ON Intermittent pressure: cycle 20 s ON Continuous pressure: cycle always ON

Standard rotation direction: clockwise (from shaft side).
Counterclockwise rotation pumps can be mounted on request.
Ask our sales department.

Spare part code

E60 60 50 **

Pump type:
60 = Group 1

Size:
see below table

Assembly code

H — **Pump type:**
H = H type

6,0 — **Nominal displacement:**
(cc/rev) see below table

Available range

Nominal displacement [cc/rev]	Peak pressure [bar]	Intermittent pressure [bar]	Continuous pressure [bar]	Max speed [rpm]	N [mm]	Bolts* [mm]	Spare part code	Weight [Kg]
1,2	280	270	250	5000	39,5	M8x55	E60605002	0,50
1,7	280	270	250	4500	41,3	M8x55	E60605035	0,52
2,2	280	270	250	4500	44,2	M8x60	E60605004	0,54
2,6	280	270	250	4500	45,7	M8x60	E60605005	0,56
3,2	280	270	250	4000	51,9	M8x65	E60605006	0,58
3,8	280	270	250	3800	54,1	M8x70	E60605007	0,61
4,2	280	270	250	3500	82,0	M8x100	E60605008	1,05
4,7	260	250	240	3200	83,5	M8x100	E60605009	1,12
6,0	230	220	210	3000	94,3	M8x110	E60605010	1,22
7,4	230	210	190	2000	97,5	M8x110	E60605012	1,80

* A washer is always fitted to ensure correct bolt engagement