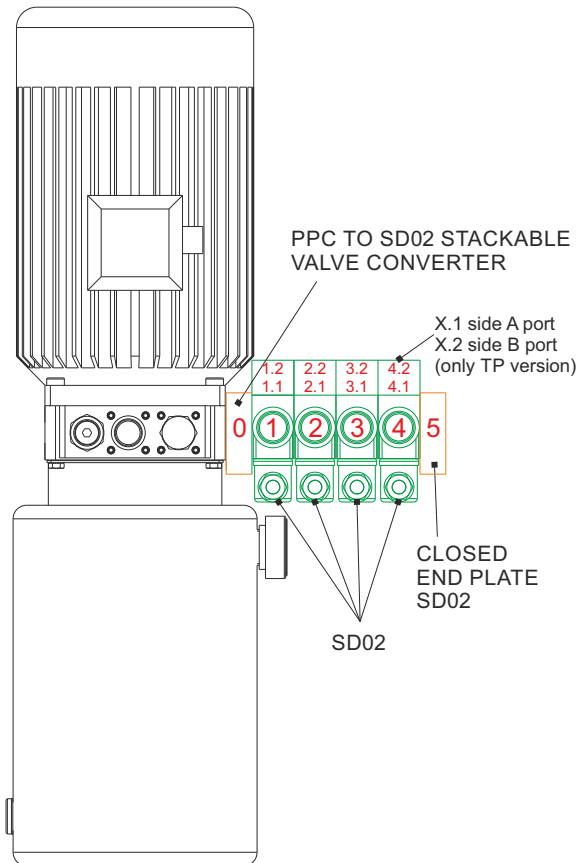
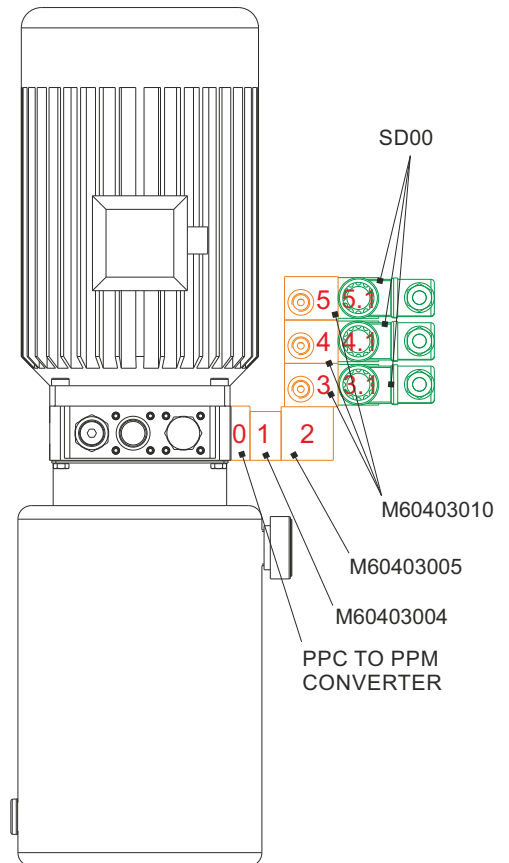


EXTERNAL MANIFOLDS & VALVE MOUNTING EXAMPLES

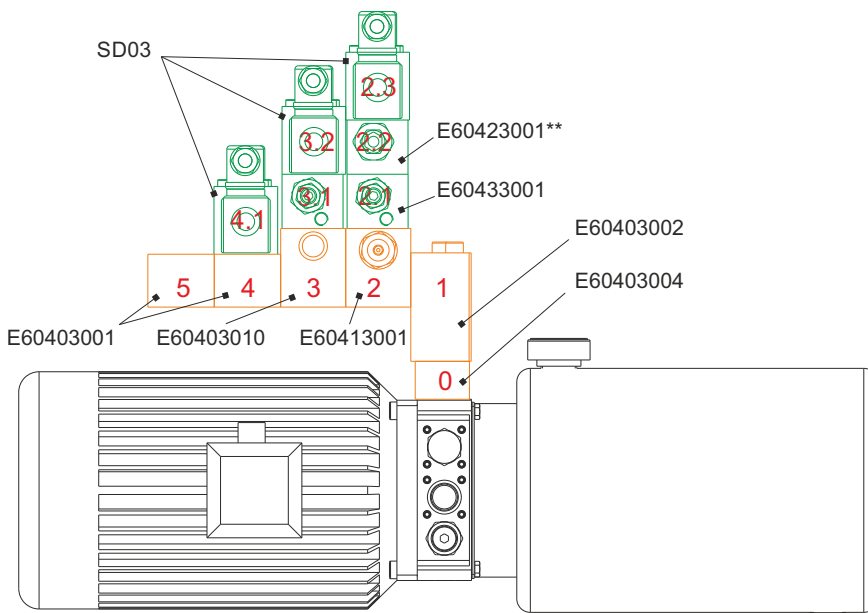
PPC + SD02 STACKABLE VALVES



PPC + NG3 MICRO BLOCKS & VALVES



PPC + NG6 (CETOP 3) BLOCKS & VALVES

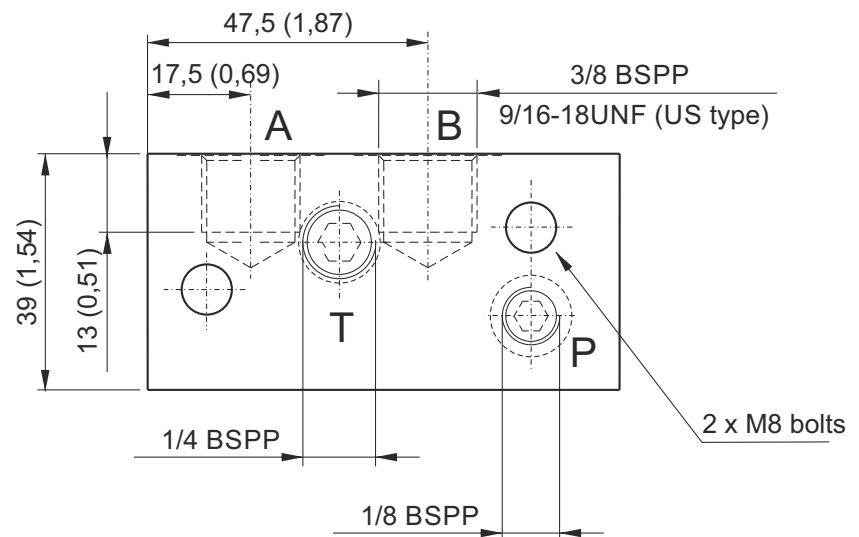
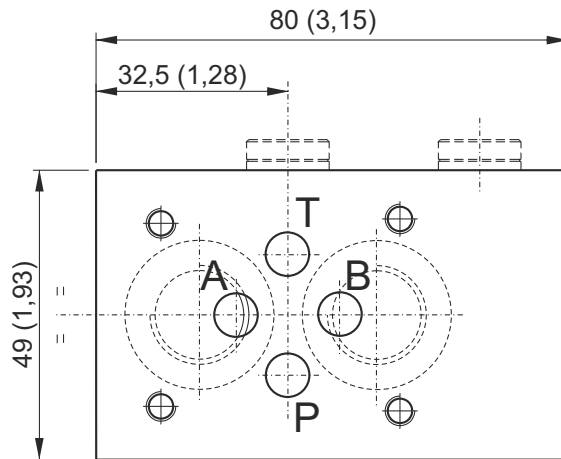


The mini powerpack external manifolds and valves are arranged following a stack level logic. Each stack is numbered eg. n, n.1, n.2, n.3,... where n is the basic manifold stack number, n.1 is the first valve mounted on top of manifold n; n.2 is the second one mounted on top of n.1,... See above self-explanatory drawings where manifolds are coloured in orange and valves in green. Stack levels are numbered in red.

NG6 (CETOP 3) MODULAR MANIFOLDS, REAR PORTS

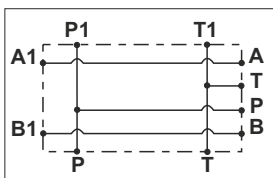


Dimensions in mm (inches)



Main features

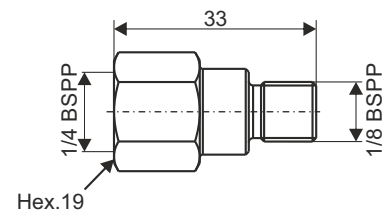
Weight 0,37 Kg (0,82lb)
Fixing bolts 2 M8 tie-rods
 steel class 8.8 or above



<i>Parallel connection</i>	Spare part code
Rear ports	E60403001
Rear ports US execution	E60403001US

Option P port:

PORTMF001
 P port 1/4 BSPP F
 for modular blocks



Note: to add external manifolds to PPC assembly code, just add their spare part codes at the end of the PPC code.
 eg: PPC-0,8 12DC-UA-J-G1,1-D/280-G-1,5L+E60403004+E60403001

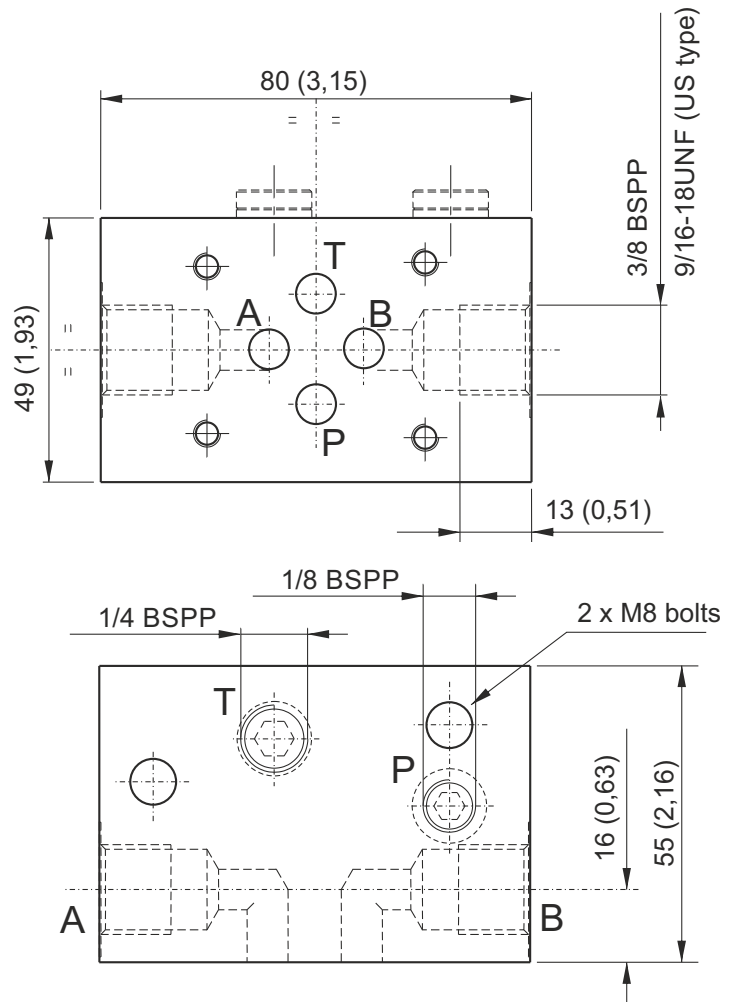
The Cetop attachment is on motor side. With AC motor frames bigger than 71 and DC motors bigger than dia. 125mm, always add a spacer manifold E60403004 (see next page) below the Cetop manifold to avoid interference between the Cetop valve and the motor.

Recommended tightening torque for M8 bolts: 16 Nm. Attention! Do not use tie-rods less than 8.8..

NG6 (CETOP 3) MODULAR MANIFOLDS, LATERAL PORTS

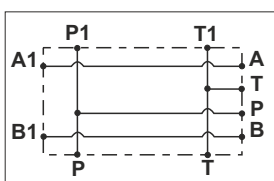


Dimensions in mm (inches)



Main features

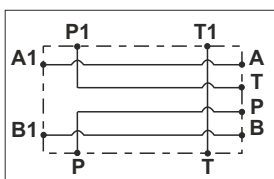
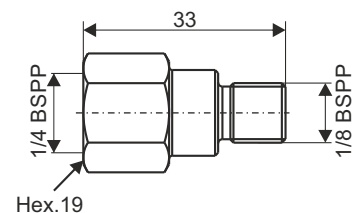
Weight	0,56 Kg (1,2lb)
Fixing bolts	2 M8 tie-rods steel class 8.8 or above



<i>Parallel connection</i>	Spare part code
Rear ports	E60403010
Rear port US execution	E60403010US

Option P port:

PORTMF0001
P port for modular blocks



<i>Series connection</i>	Spare part code
Rear ports	E60403011
Rear port US execution	E60403011US

Note: to add external manifolds to PPC assembly code, just add their spare part codes at the end of the PPC code.
Ex: PPC-0,8 12DC-UA-J-G1,1-D/280-G-1,5L+E60403004+E60403010

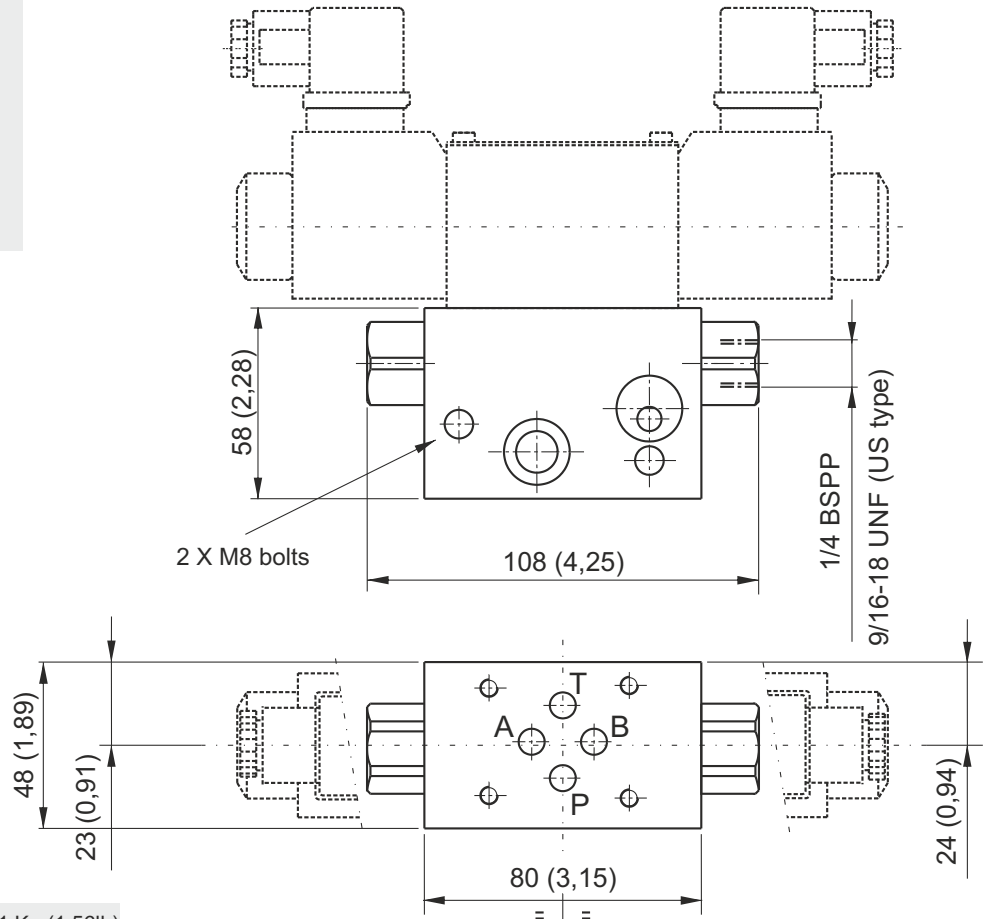
The Cetop attachment is on motor side. With AC motor frames bigger than 71 and DC motors bigger than dia. 125mm, always add a spacer manifold E60403004 (see next page) below the Cetop manifold to avoid interference between the Cetop valve and the motor.

Recommended tightening torque for M8 bolts: 16 Nm. Attention! Do not use tie-rods less than 8.8.

NG6 (CETOP 3) MODULAR MANIFOLDS WITH INTEGRAL PILOT OPERATED CHECK VALVES

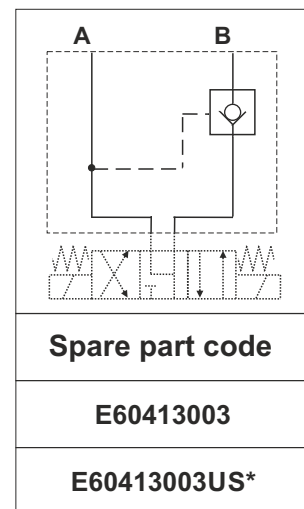
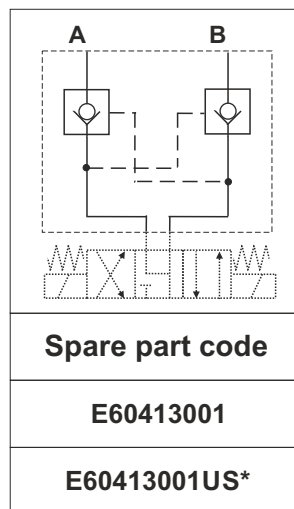
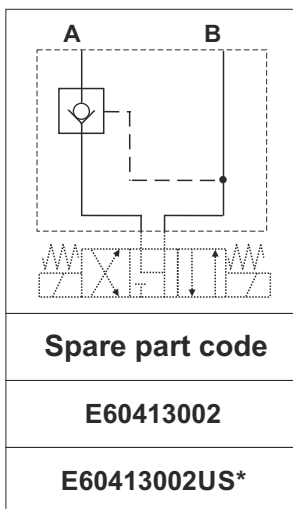


Dimensions in mm (inches)



Main features

Weight	0,71 Kg (1,56lb)
Fixing bolts	2 M8 tie-rods steel class 8.8 or above



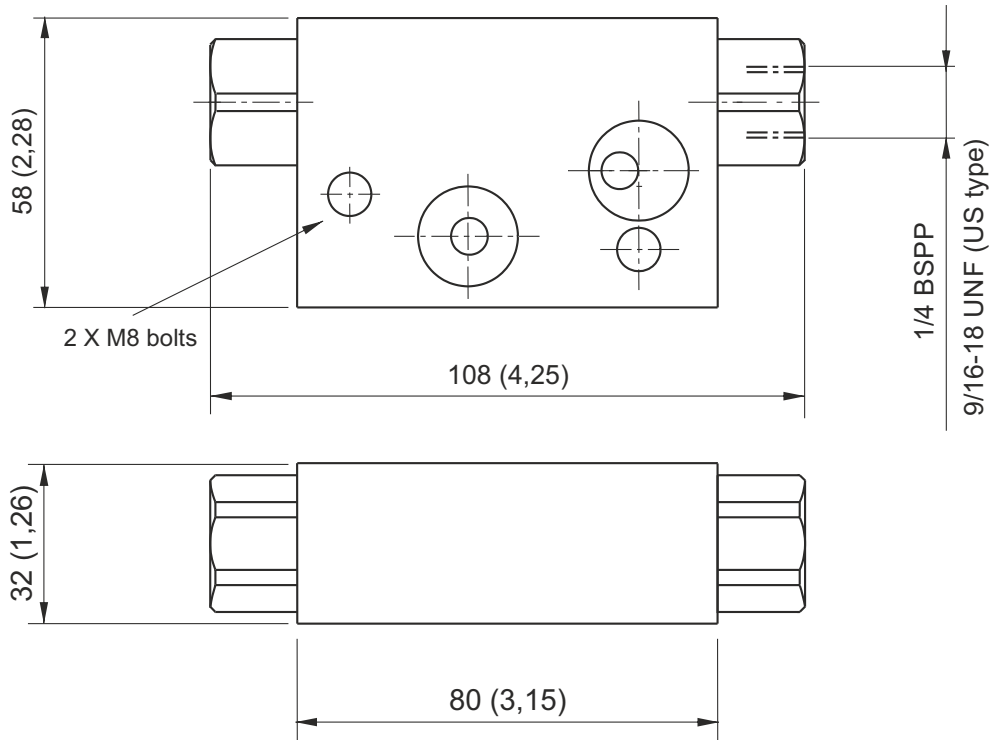
*: US execution with 9/16-18UNF SAE06 exit ports
Code does not include the Cetop solenoid valve.
Recommended tightening torque for M8 bolts: 16 Nm. Attention! Don't use tie-rods less than 8.8.

MODULAR MANIFOLDS WITH PILOT OPERATED CHECK VALVES



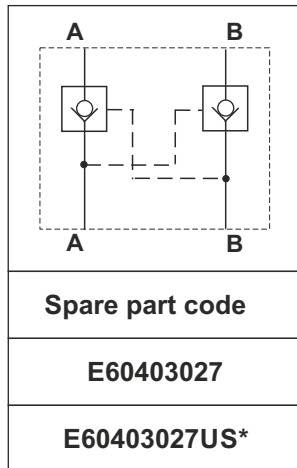
Dimensions in mm (inches)

Available on:
Central manifold U4
Central manifold UR



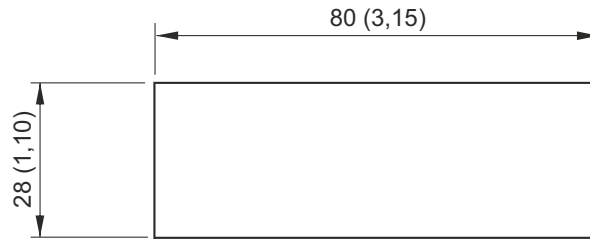
Main features

Weight	0,5 Kg (1,1lb)
Fixing bolts	2 M8 tie-rods steel class 8.8 or above



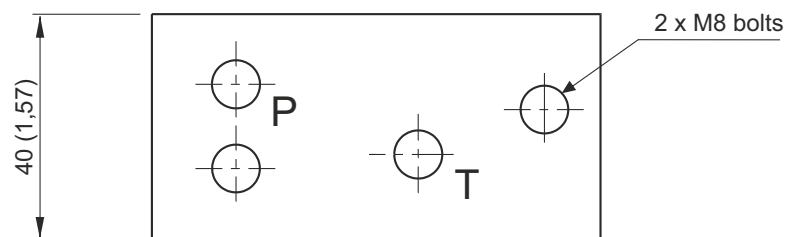
*: US execution with 9/16-18UNF SAE06 exit ports
Recommended tightening torque for M8 bolts: 16 Nm.
Attention! Do not use tie-rods less than 8.8.

SPACER ELEMENTS



Dimensions in mm (inches)

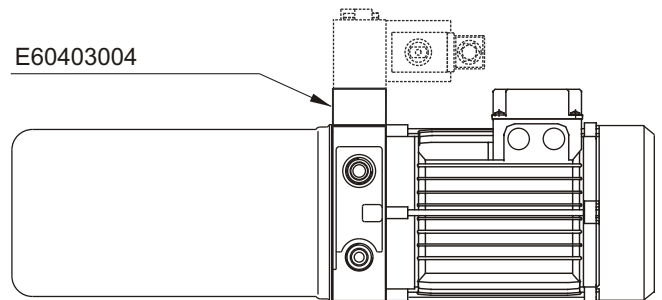
Suitable for all central manifolds with AC motors with frame bigger than 71 and DC motors with frame bigger than Ø125.



Main features

Weight	0,23 Kg (0,5lb)
Fixing bolts	2 M8 tie-rods steel class 8.8 or above

Mounting example



Spare part code
E60403004

Attention! Do not use tie-rods less than 8.8.

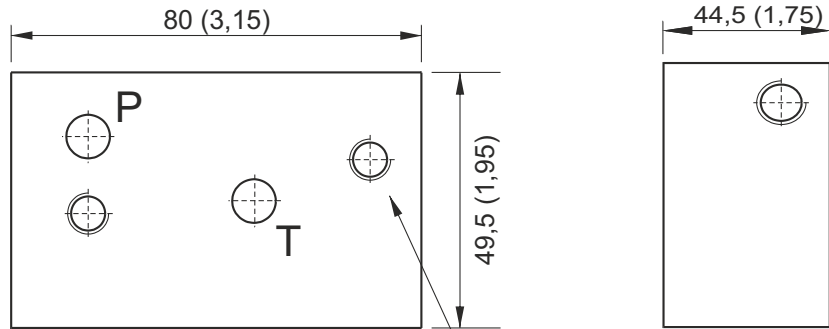
90° ROTATION MANIFOLDS 49MM



IMPROVED

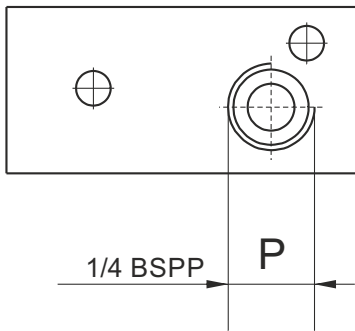
Dimensions in mm (inches)

For AC motor with frame 90 or above and DC motor Ø151 or above must be used with E60403004.

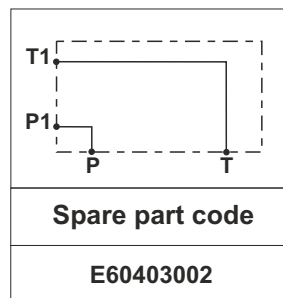
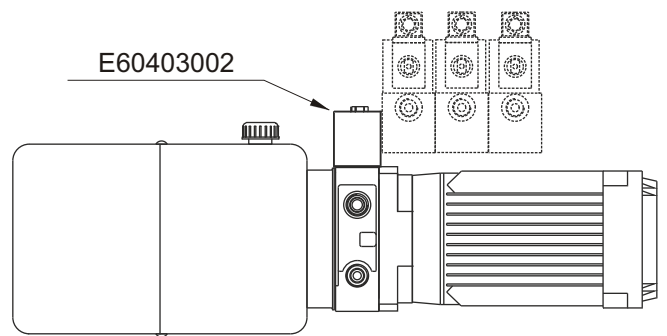


Main features

Weight	0,72 Kg (1,59lb)
Fixing bolts	2 M8 tie-rods steel class 8.8 or above



Mounting example



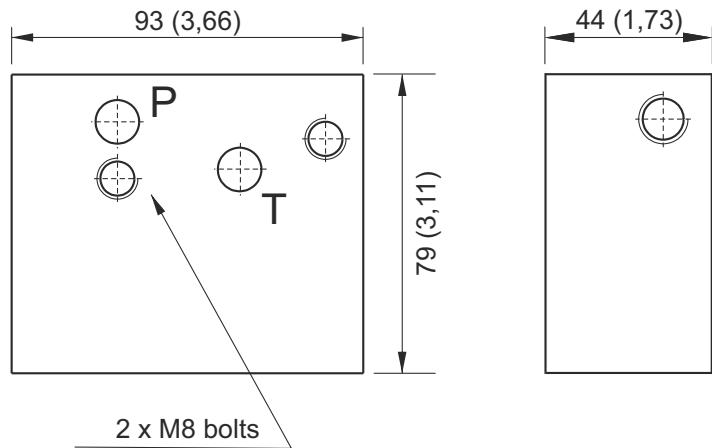
Attention! Do not use tie-rods less than 8.8.

90° ROTATION MANIFOLDS WITH DOUBLE-SIDED ATTACHMENT P & T 79MM



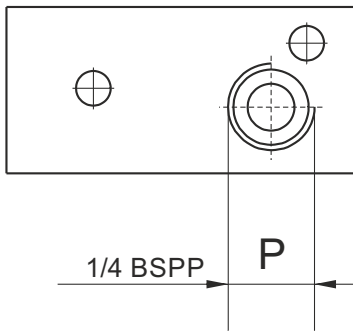
Dimensions in mm (inches)

For AC motor with frame 90 or above and DC motor Ø151 or above must be used with E60403004.

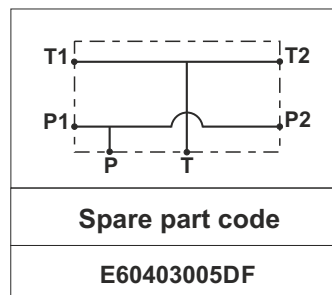
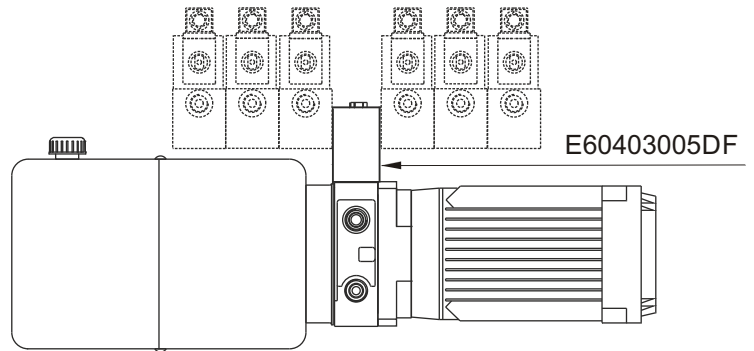


Main features

Weight	0,72 Kg
Fixing bolts	2 M8 tie-rods steel class 8.8 or above



Mounting example



Attention! Do not use tie-rods less than 8.8.