

Series Industrial ENCLOSED in PAINTED STEEL

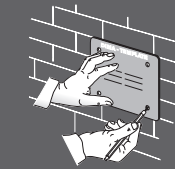


S. 440

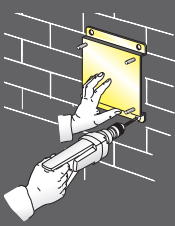


THE HOSE REELS ARE EQUIPPED WITH A UNIVERSAL HOSE STOP; THOSE WITH HOSE ARE PROVIDED WITH A 0,6 m INLET CONNECTION HOSE.

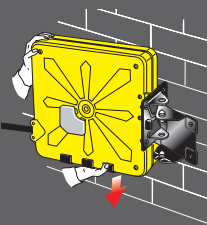
- The template supplied, facilitates drilling of the holes and therefore hose reel fixing.



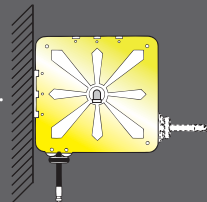
- The quick coupling support (see page 82) that facilitates installation in battery is available on request.



- The quick coupling adjustable support (see page 82) that enables 40° rotation to the right or left of the hose reel is available on request.



- The adjustable arms can be easily repositioned according to needs (see page 77).



Air - Water 20 bar

swivel Brass seals Viton

| Article | Capacity l/min Air-Water | Delivery hose | ø Hose | Inlet connection | Outlet connection |
|-----------------------------|--------------------------|---------------|--------|------------------|-------------------|
| Series 440 440/10 | 800 - 50 | without hose | / | F 1/2"G | F 1/2"G |
| 440/11 | 760 - 47 | 15m (962/15) | 1/2" | F 1/2"G | M 1/2"G |
| 440/12 | 690 - 30 | 12m (952/13) | 3/8" | F 1/2"G | M 3/8"G |
| 440/13 | 640 - 25 | 18m (952/19) | 3/8" | F 1/2"G | M 3/8"G |
| 440/14 | 780 - 48 | 10m (962/10) | 1/2" | F 1/2"G | M 1/2"G |

N° 1 packing m³ 0,111 from kg 24 to 29

Oil 150 bar

swivel Steel seals Polyurethane

| Article | Relative capacity | Delivery hose | ø Hose | Inlet connection | Outlet connection |
|-----------------------------|-------------------|---------------|--------|------------------|-------------------|
| Series 440 440/40 | 20 l/min | without hose | / | F 1/2"G | F 1/2"G |
| 440/41 | 14 l/min | 10m (963/11) | 1/2" | F 1/2"G | M 1/2"G |
| 440/42 | 12 l/min | 15m (963/15) | 1/2" | F 1/2"G | M 1/2"G |

N° 1 packing m³ 0,111 from kg 24 to 29

Grease 600 bar

swivel Steel seals Polyurethane

| Article | Relative capacity | Delivery hose | ø Hose | Inlet connection | Outlet connection |
|-----------------------------|-------------------|---------------|--------|------------------|-------------------|
| Series 440 440/50 | 1200 g/min | without hose | / | F 3/8"G | F 1/2"G |
| 440/51 | 650 g/min | 12m (935/13) | 1/4" | F 3/8"G | M 1/4"G |
| 440/52 | 550 g/min | 18m (935/18) | 1/4" | F 3/8"G | M 1/4"G |
| 440/55 | 800 g/min | 10m (957/10) | 3/8" | F 3/8"G | M 1/4"G |
| 440/56 | 750 g/min | 15m (957/15) | 3/8" | F 3/8"G | M 1/4"G |

N° 1 packing m³ 0,111 from kg 24 to 29

OVERALL DIMENSIONS

| Series | A | B | C | D | E | F | G | H |
|--------|-----|-----|-----|-----|-----|-----|-----|-----|
| 440 | 217 | 140 | 236 | 500 | 485 | 177 | 180 | 236 |

