

Series Industrial POWERED

Water - Hot water

100 bar

swivel
seals
hose

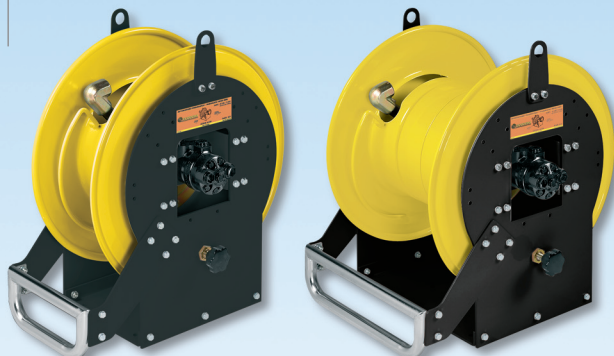
St. steel AISI 304
Viton
Black synthetic
rubber



HYDRAULIC

S. 617

S. 637



PNEUMATIC

S. 618

S. 638

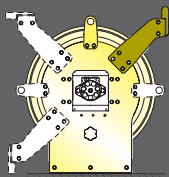


THE HOSE REELS COMPLETE WITH HOSE ARE EQUIPPED WITH 0,6 m CONNECTION HOSE

- The template supplied, facilitates drilling of the holes and therefore hose reel fixing.

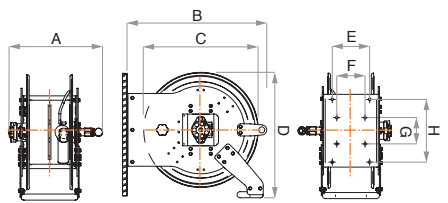


- The adjustable arms can be easily repositioned according to needs.



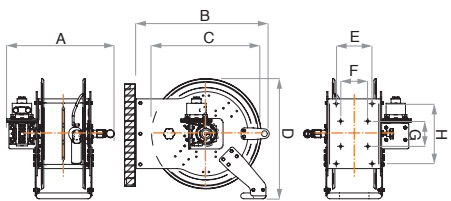
OVERALL DIMENSIONS

Series	A	B	C	D	E	F	G	H
617	463	692	570	621	185	140	130	310
637	649	692	570	621	370	140	130	310



OVERALL DIMENSIONS

Series	A	B	C	D	E	F	G	H
618	555	692	570	621	185	140	130	310
638	740	692	570	621	370	140	130	310



hydraulic Series 617

Article	Relative capacity	Delivery hose	∅ Hose	Inlet connection	Outlet connection
617/200	140 l/min	without hose	/	F 1"G	F 1"G
617/201	40 l/min	30m (963/29)	1/2"	F 1"G	M 1/2"G
617/202	37 l/min	40m (963/39)	1/2"	F 1"G	M 1/2"G
617/203	32 l/min	50m (963/49)	1/2"	F 1"G	M 1/2"G
617/204	100 l/min	15m (973/14)	3/4"	F 1"G	M 3/4"G
617/205	95 l/min	20m (973/19)	3/4"	F 1"G	M 3/4"G
617/206	90 l/min	30m (973/29)	3/4"	F 1"G	M 3/4"G
617/207	115 l/min	15m (983/15)	1"	F 1"G	M 1"G
617/208	110 l/min	20m (983/19)	1"	F 1"G	M 1"G

☐ N° 1 packing m³ 0,350 📦 from kg 55 to 86

hydraulic Series 637

637/200	140 l/min	without hose	/	F 1"G	F 1"G
637/201	30 l/min	60m (963/59)	1/2"	F 1"G	M 1/2"G
637/202	27 l/min	70m (963/69)	1/2"	F 1"G	M 1/2"G
637/203	24 l/min	80m (963/79)	1/2"	F 1"G	M 1/2"G
637/204	21 l/min	90m (963/89)	1/2"	F 1"G	M 1/2"G
637/205	20 l/min	100m (963/99)	1/2"	F 1"G	M 1/2"G
637/206	87 l/min	40m (973/39)	3/4"	F 1"G	M 3/4"G
637/207	85 l/min	50m (973/49)	3/4"	F 1"G	M 3/4"G
637/208	82 l/min	60m (973/59)	3/4"	F 1"G	M 3/4"G
637/209	105 l/min	30m (983/29)	1"	F 1"G	M 1"G
637/210	100 l/min	40m (983/39)	1"	F 1"G	M 1"G

☐ N° 1 packing m³ 0,473 📦 from kg 75 to 136

pneumatic Series 618

618/200	140 l/min	without hose	/	F 1"G	F 1"G
618/201	40 l/min	30m (963/29)	1/2"	F 1"G	M 1/2"G
618/202	37 l/min	40m (963/39)	1/2"	F 1"G	M 1/2"G
618/203	32 l/min	50m (963/49)	1/2"	F 1"G	M 1/2"G
618/204	100 l/min	15m (973/14)	3/4"	F 1"G	M 3/4"G
618/205	95 l/min	20m (973/19)	3/4"	F 1"G	M 3/4"G
618/206	90 l/min	30m (973/29)	3/4"	F 1"G	M 3/4"G
618/207	115 l/min	15m (983/15)	1"	F 1"G	M 1"G
618/208	110 l/min	20m (983/19)	1"	F 1"G	M 1"G

☐ N° 1 packing m³ 0,350 📦 from kg 51 to 82

pneumatic Series 638

638/200	140 l/min	without hose	/	F 1"G	F 1"G
638/201	30 l/min	60m (963/59)	1/2"	F 1"G	M 1/2"G
638/202	27 l/min	70m (963/69)	1/2"	F 1"G	M 1/2"G
638/203	24 l/min	80m (963/79)	1/2"	F 1"G	M 1/2"G
638/204	21 l/min	90m (963/89)	1/2"	F 1"G	M 1/2"G
638/205	20 l/min	100m (963/99)	1/2"	F 1"G	M 1/2"G
638/206	87 l/min	40m (973/39)	3/4"	F 1"G	M 3/4"G
638/207	85 l/min	50m (973/49)	3/4"	F 1"G	M 3/4"G
638/208	82 l/min	60m (973/59)	3/4"	F 1"G	M 3/4"G
638/209	105 l/min	30m (983/29)	1"	F 1"G	M 1"G
638/210	100 l/min	40m (983/39)	1"	F 1"G	M 1"G

☐ N° 1 packing m³ 0,473 📦 from kg 71 to 132