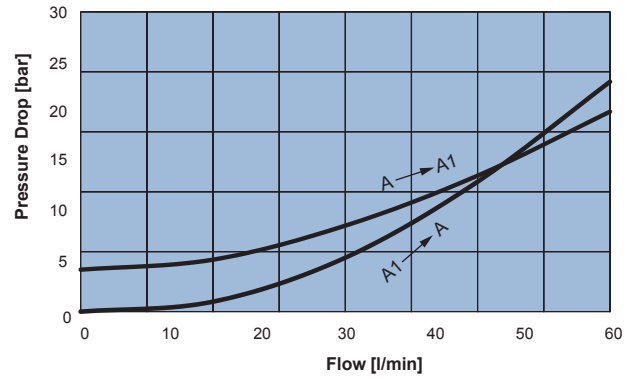
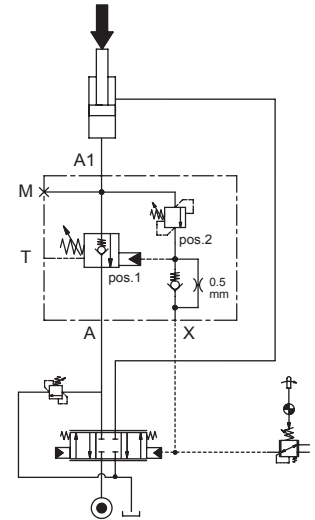
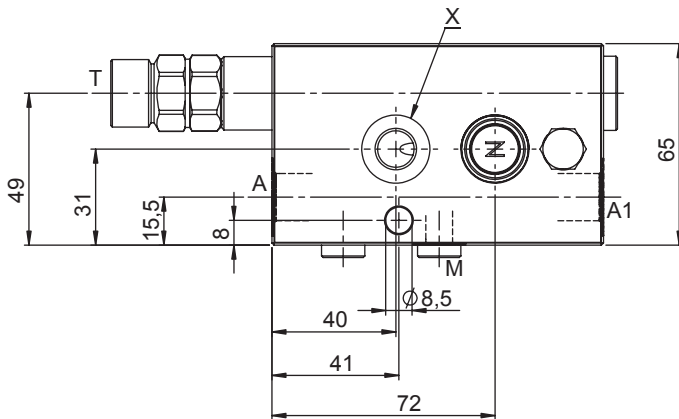
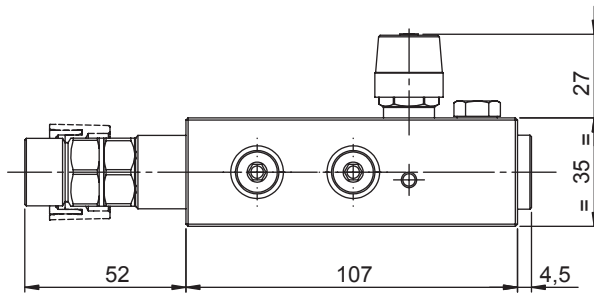


LOAD LOWERING CONTROL VALVE - LINE MOUNTED / RIGHT HAND

- Flow **40 l/min**
- Max working pressure **410 bar**
- Compensation **Fully Compensated with drain line**
- Weight **1,9 Kg**
- Tamper proof cap **cod.9021030191**



Ordering code

Y 5 0 0 1 Y **0 0**

PILOT RATIO	
11	1:0 - FINE METERING

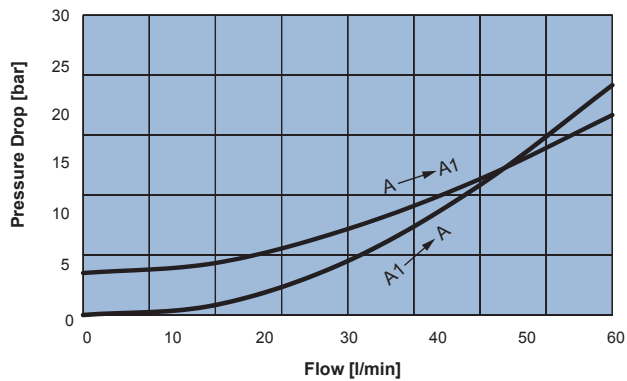
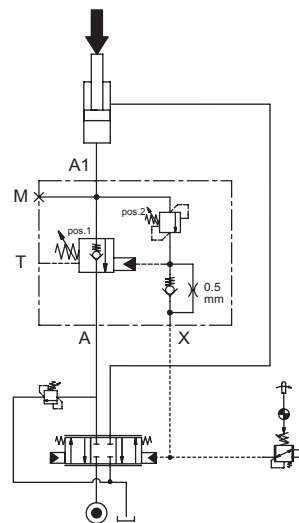
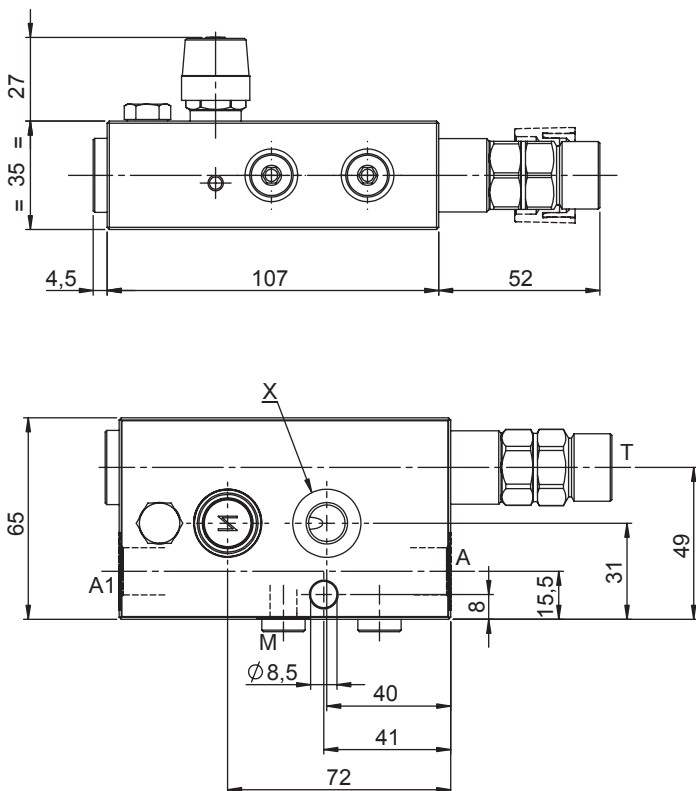
PORTS	03	53
A,A1	G 3/8"	SAE 08
X,T	G 1/4"	SAE 06

SPRING pos.1			
	Setting Range min.-max. [bar]	Pressure Increase [bar/turn]	Standard Setting @20 cc/min [bar]
2	5 - 14	4,7	7,5

SPRING pos.2			
	Setting Range min.-max. [bar]	Pressure Increase [bar/turn]	Standard Setting @4 l/min [bar]
3	200 - 400	250	350

LOAD LOWERING CONTROL VALVE - LINE MOUNTED / LEFT HAND

- Flow **40 l/min**
- Max working pressure **410 bar**
- Compensation **Fully Compensated with drain line**
- Weight **1,9 Kg**
- Tamper proof cap **cod.9021030191**



Ordering code

Y 5 0 0 2 Y **0 0**

PILOT RATIO	
11	1:0 FINE METERING

PORTS	03	53
A,A1	G 3/8"	SAE 08
X,T	G 1/4"	SAE 06

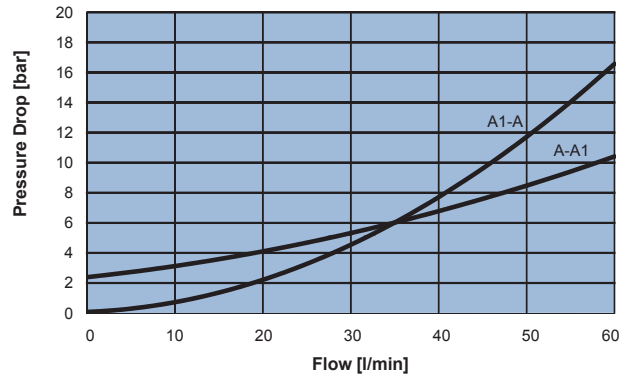
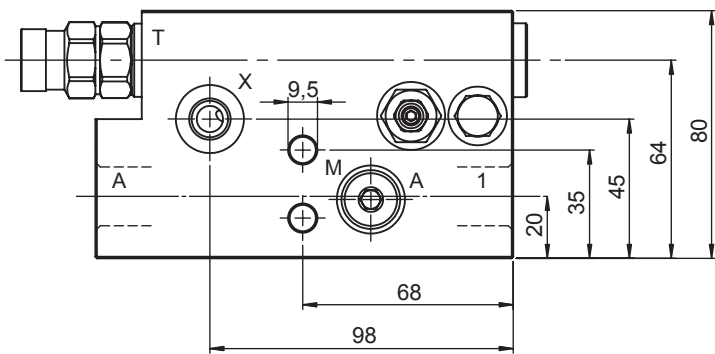
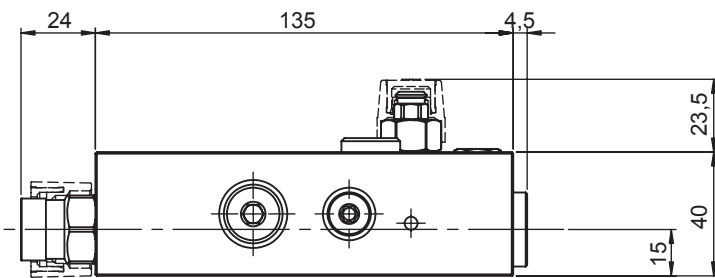
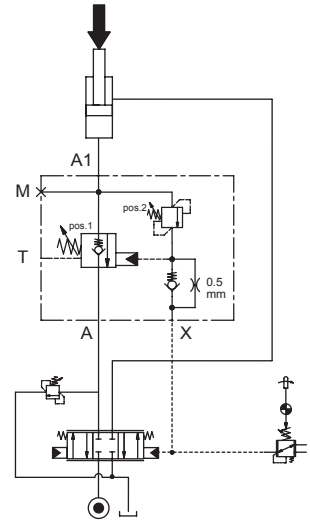
SPRING pos.1			
	Setting Range min.-max. [bar]	Pressure Increase [bar/turn]	Standard Setting @20 cc/min [bar]
2	5 - 14	4,7	7,5

SPRING pos.2			
	Setting Range min.-max. [bar]	Pressure Increase [bar/turn]	Standard Setting @4 l/min [bar]
3	200 - 400	250	350



LOAD LOWERING CONTROL VALVE - LINE MOUNTED / RIGHT HAND

- Flow **60 l/min**
- Max working pressure **410 bar**
- Compensation **Fully Compensated with drain line**
- Weight **2,6 Kg**
- Tamper proof cap **cod.9021030191**
cod.9021015101



Ordering code

Y 5 0 0 1 Y **0 1**

PILOT RATIO	
14	1:0 - FINE METERING

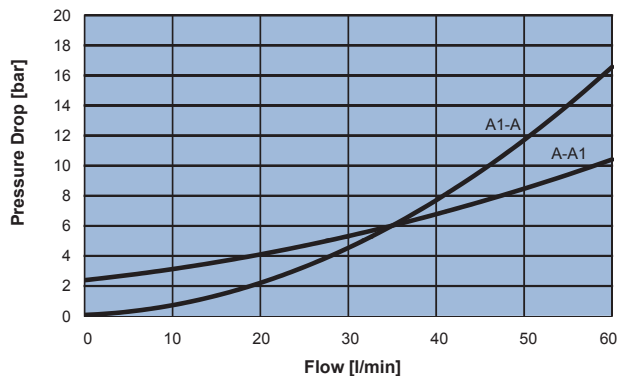
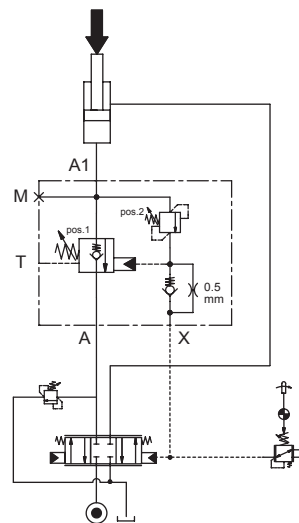
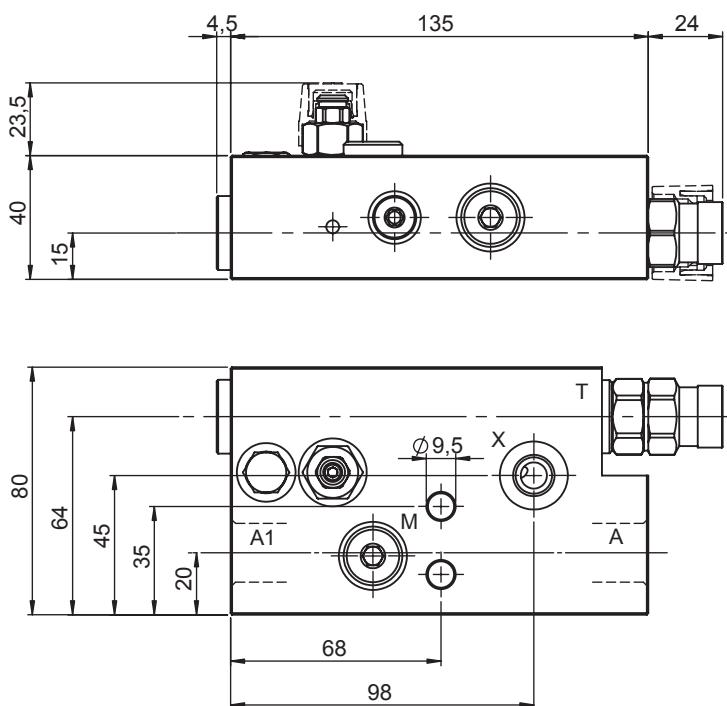
PORTS	04	54
A,A1	G 1/2"	SAE 10
X,T	G 1/4"	SAE 06

SPRING pos.1			
	Setting Range min.-max. [bar]	Pressure Increase [bar/turn]	Standard Setting @20 cc/min [bar]
2	5 - 14	2,5	7,5

SPRING pos.2			
	Setting Range min.-max. [bar]	Pressure Increase [bar/turn]	Standard Setting @4 l/min [bar]
3	200 - 400	250	350

LOAD LOWERING CONTROL VALVE - LINE MOUNTED / LEFT HAND

- Flow. **60 l/min**
- Max working pressure **410 bar**
- Compensation. **Fully Compensated with drain line**
- Weight. **2,6 Kg**
- Tamper proof cap **cod.9021030191**
cod.9021015101



Ordering code

Y 5 0 0 2 Y **0 1**

PILOT RATIO	
14	1:0 FINE METERING

PORTS	04	54
A,A1	G 1/2"	SAE 10
X,T	G 1/4"	SAE 06

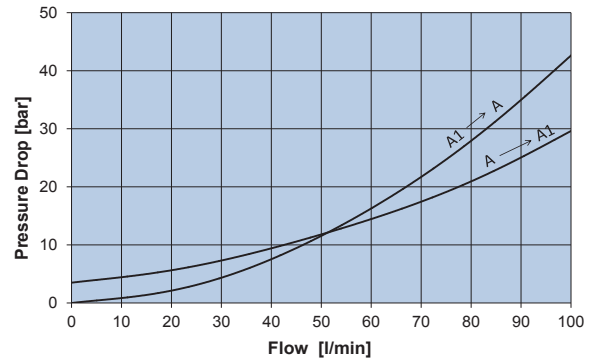
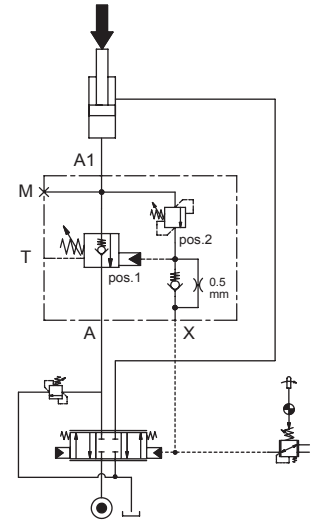
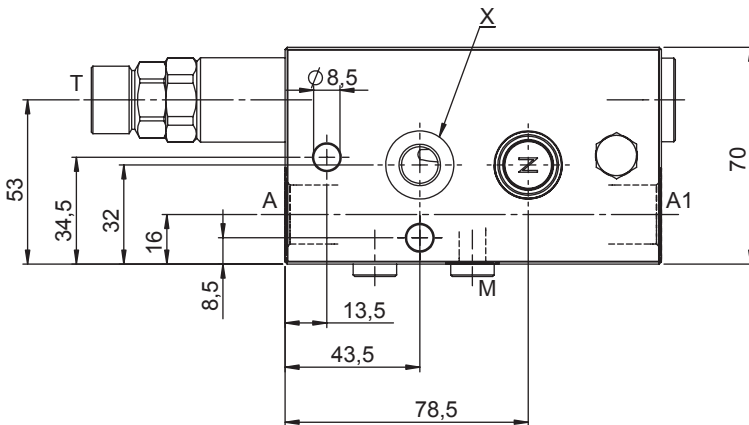
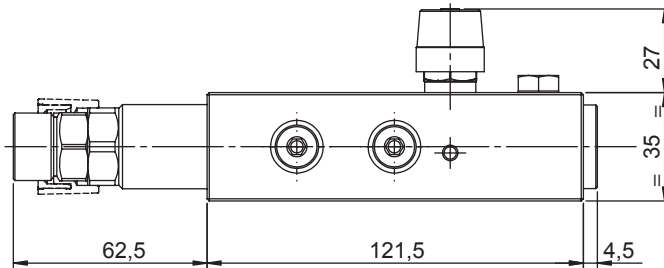
SPRING pos.1			
	Setting Range min.-max. [bar]	Pressure Increase [bar/turn]	Standard Setting @20 cc/min [bar]
2	5 - 14	2,5	7,5

SPRING pos.2			
	Setting Range min.-max. [bar]	Pressure Increase [bar/turn]	Standard Setting @4 l/min [bar]
3	200 - 400	250	350



LOAD LOWERING CONTROL VALVE - LINE MOUNTED / RIGHT HAND

- Flow **75 l/min**
- Max working pressure **410 bar**
- Compensation **Fully Compensated with drain line**
- Weight **2,3 Kg**
- Tamper proof cap **cod.9021030191**



Ordering code

Y 1 0 0 1 Y [] [] [] [] **0 0**

PILOT RATIO	
11	1:0 - FINE METERING

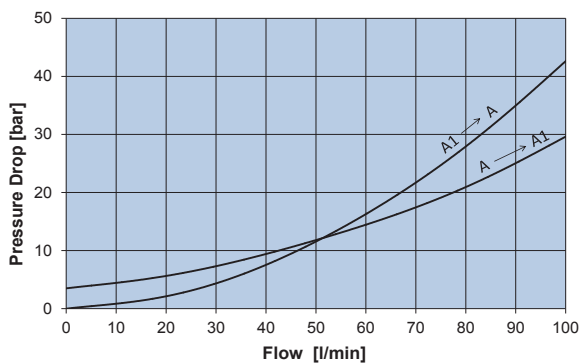
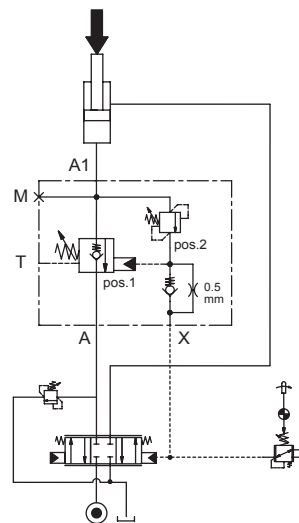
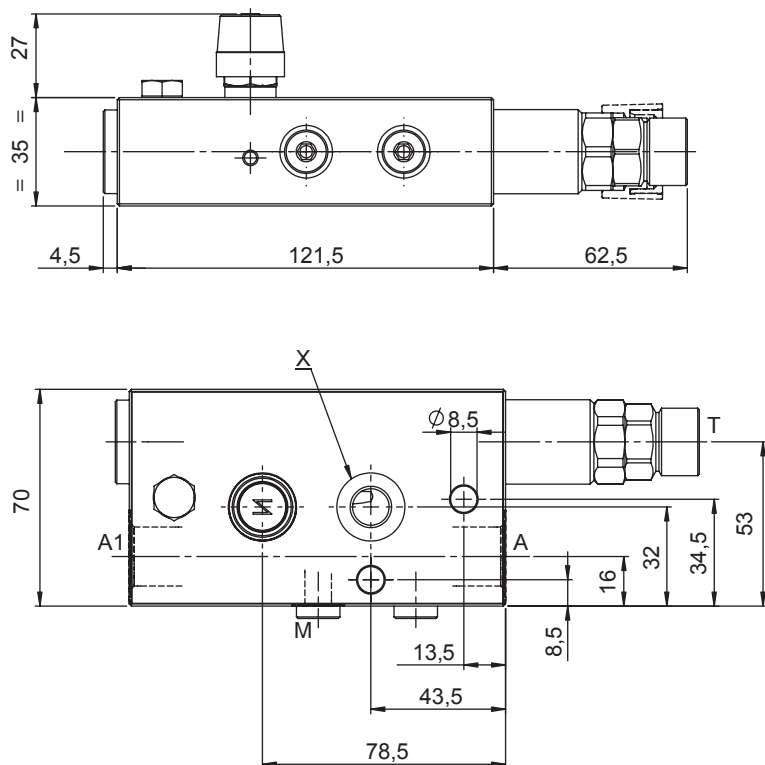
PORTS	04	54
A,A1	G 1/2"	SAE 10
X,T	G 1/4"	SAE 06

SPRING pos.1			
	Setting Range min.-max. [bar]	Pressure Increase [bar/turn]	Standard Setting @20 cc/min [bar]
2	5 - 14	2,5	7,5

SPRING pos.2			
	Setting Range min.-max. [bar]	Pressure Increase [bar/turn]	Standard Setting @4 l/min [bar]
3	200 - 400	250	350

LOAD LOWERING CONTROL VALVE - LINE MOUNTED / LEFT HAND

- Flow **75 l/min**
- Max working pressure **410 bar**
- Compensation **Fully Compensated with drain line**
- Weight **2,3 Kg**
- Tamper proof cap **cod.9021030191**



Ordering code

Y 1 0 0 2 Y **0 0**

PILOT RATIO	
11	1:0 FINE METERING

PORTS	04	54
A,A1	G 1/2"	SAE 10
X,T	G 1/4"	SAE 06

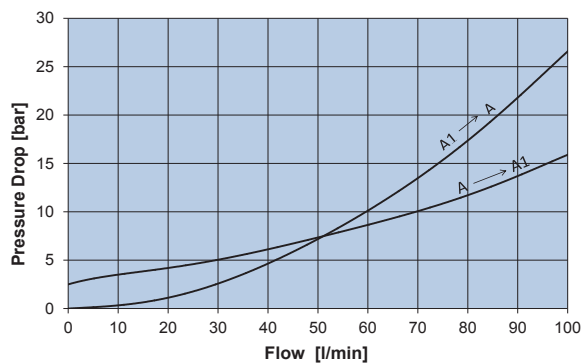
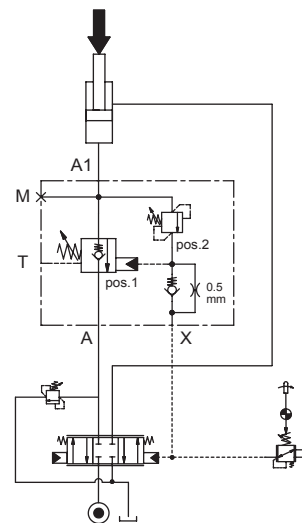
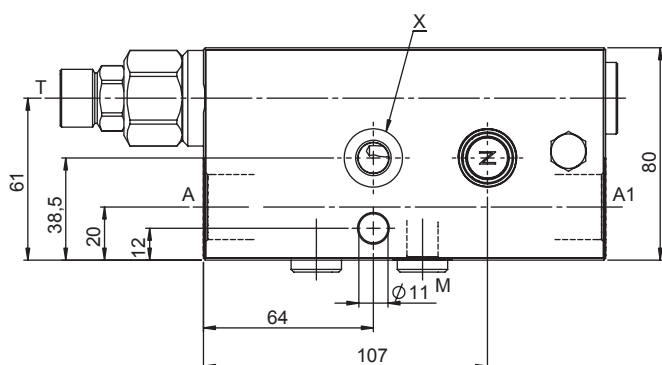
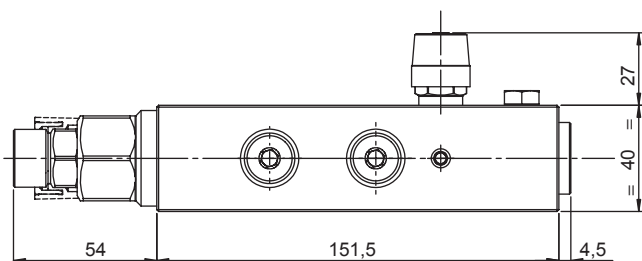
SPRING pos.1			
	Setting Range min.-max. [bar]	Pressure Increase [bar/turn]	Standard Setting @20 cc/min [bar]
2	5 - 14	2,5	7,5

SPRING pos.2			
	Setting Range min.-max. [bar]	Pressure Increase [bar/turn]	Standard Setting @4 l/min [bar]
3	200 - 400	250	350



LOAD LOWERING CONTROL VALVE - LINE MOUNTED / RIGHT HAND

- Flow **100 l/min**
- Max working pressure..... **410 bar**
- Compensation..... **Fully Compensated with drain line**
- Weight..... **3,6 Kg**
- Tamper proof cap..... **cod.9021030191**



Ordering code

Y 1 5 0 1 Y **0 0**

PILOT RATIO	
11	1:0 FINE METERING

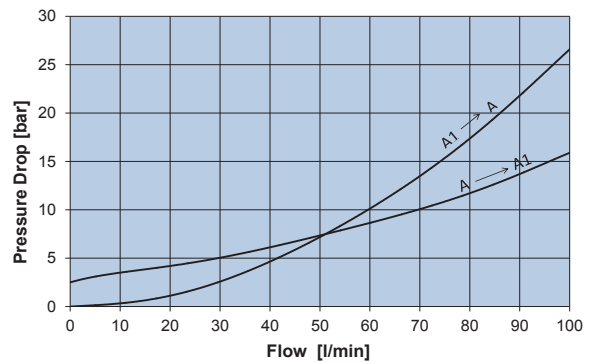
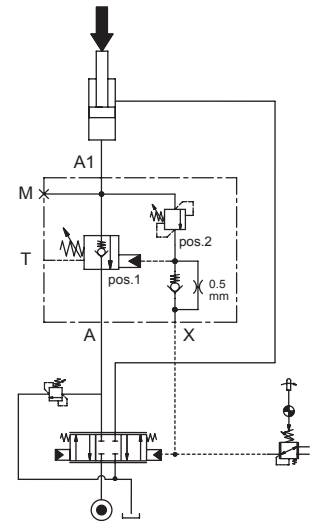
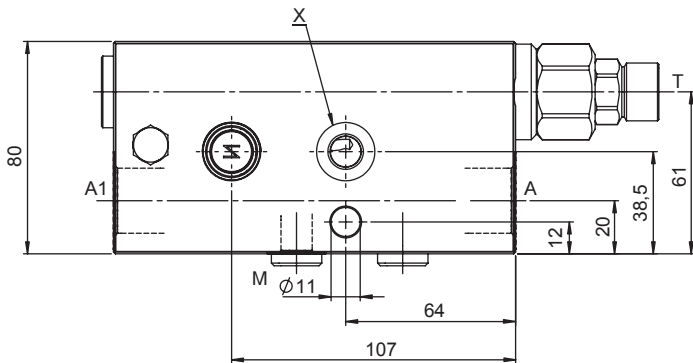
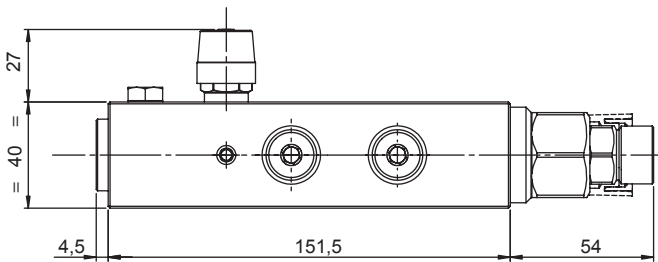
PORTS	05	55
A,A1	G 3/4"	SAE 12
X,T	G 1/4"	SAE 06

SPRING pos.1			
	Setting Range min.-max. [bar]	Pressure Increase [bar/turn]	Standard Setting @20 cc/min [bar]
2	5 - 14	2,5	7,5

SPRING pos.2			
	Setting Range min.-max. [bar]	Pressure Increase [bar/turn]	Standard Setting @4 l/min [bar]
3	200 - 400	250	350

LOAD LOWERING CONTROL VALVE - LINE MOUNTED / LEFT HAND

- Flow **100 l/min**
- Max working pressure..... **410 bar**
- Compensation..... **Fully Compensated with drain line**
- Weight..... **3,6 Kg**
- Tamper proof cap..... **cod.9021030191**



Ordering code

Y 1 5 0 2 Y **0 0**

PILOT RATIO	
11	1:0 - FINE METERING

PORTS	05	55
A,A1	G 3/4"	SAE 12
X,T,M	G 1/4"	SAE 06

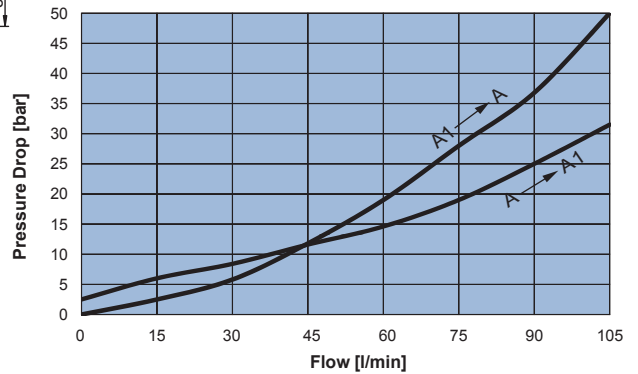
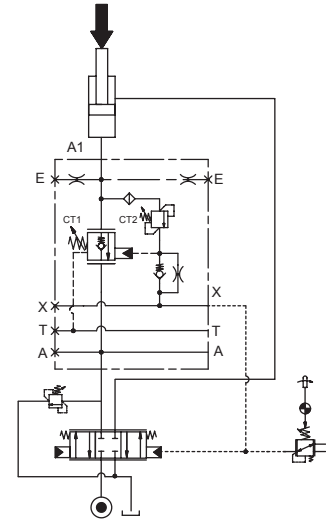
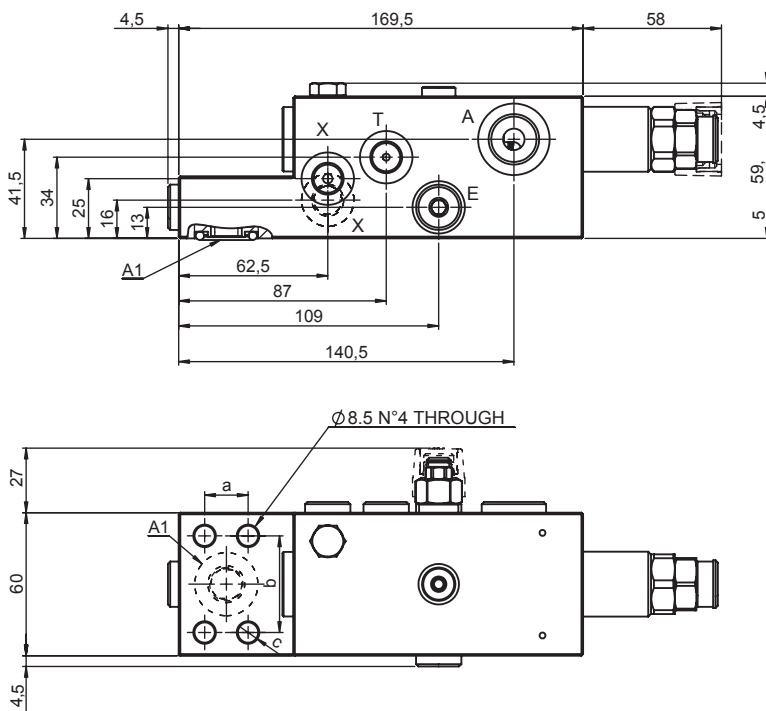
SPRING pos.1			
	Setting Range min.-max. [bar]	Pressure Increase [bar/turn]	Standard Setting @20 cc/min [bar]
2	5 - 14	2,5	7,5

SPRING pos.2			
	Setting Range min.-max. [bar]	Pressure Increase [bar/turn]	Standard Setting @4 l/min [bar]
3	200 - 400	250	350



LOAD LOWERING CONTROL VALVE - SAE FLANGED 1/2"-SAE6000

- Max flow. **75 l/min**
- Max working pressure. **410 bar**
- Compensation **Fully Compensated with drain line**
- Weight. **3.9 Kg**
- Tamper proof cap CT1. **cod.9021030191**
- Tamper proof cap CT2. **cod.9021015101**



Flange	a	b	c	O-Ring
1/2"- SAE 6000	18.2	40.5	8.5	18.64x3.53 NBR 70°SH

Ordering code

Y 1 0 1 3 Y **0 0**

PILOT RATIO	
11	1:0 FINE METERING

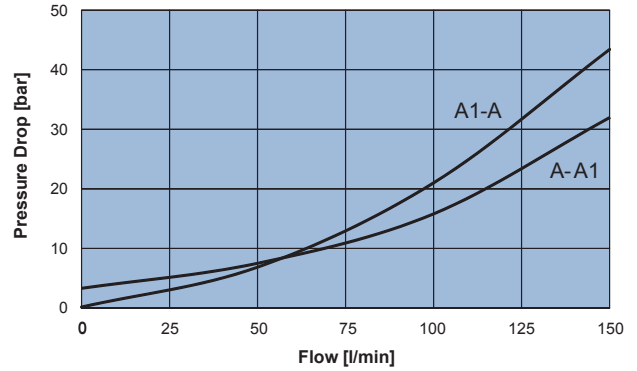
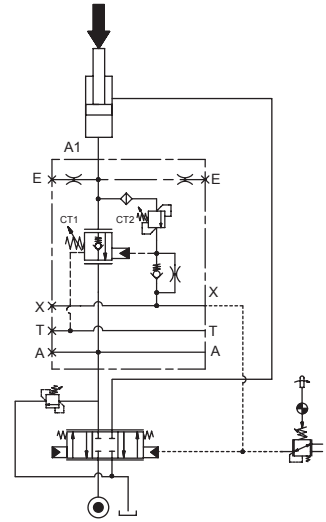
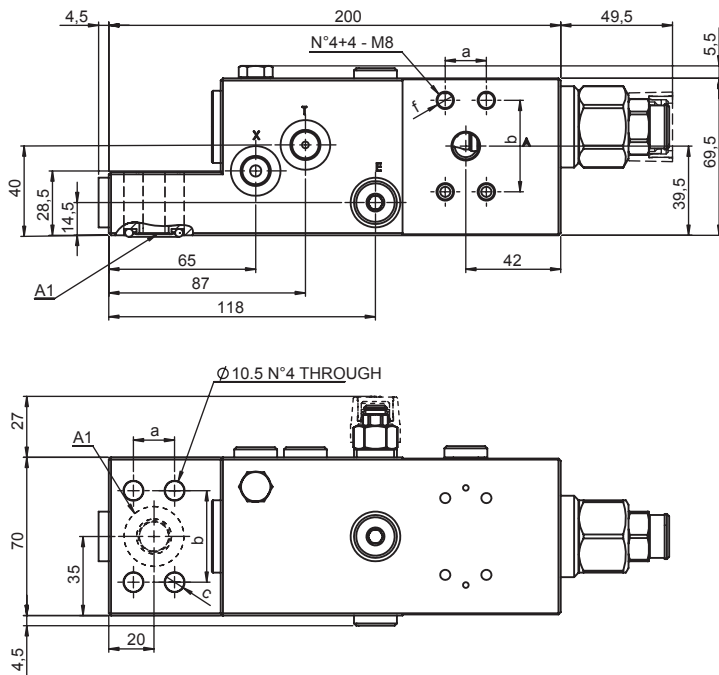
PORTS	
64	
A1	1/2" - SAE 6000
A	G 1/2"
T-E-X	G 1/4"

SPRING CT1			
	Setting Range min.-max. [bar]	Pressure Increase [bar/turn]	Standard Setting @20 cc/min [bar]
2	5 - 14	2,5	7,5
4	7 - 19	4,5	7,5

SPRING CT2			
	Setting Range min.-max. [bar]	Pressure Increase [bar/turn]	Standard Setting @4 l/min [bar]
4	250 - 410	250	350

LOAD LOWERING CONTROL VALVE - SAE FLANGED 1/2"-SAE6000

- Max flow **150 l/min**
- Max working pressure **410 bar**
- Compensation **Fully Compensated with drain line**
- Weight **6.2 Kg**
- Tamper proof cap CT1 **cod.9021030191**
- Tamper proof cap CT2 **cod.9021015101**



Flange	a	b	c	f	O-Ring
1/2"- SAE 6000	18.2	40.5	8.5	M 8	18.64x3.53 NBR 70°SH

Ordering code

Y 1 5 1 3 Y **0 0**

PILOT RATIO	
11	1:0 - FINE METERING

PORTS	64
A,A1	1/2" - SAE 6000
T-E-X	G 1/4"

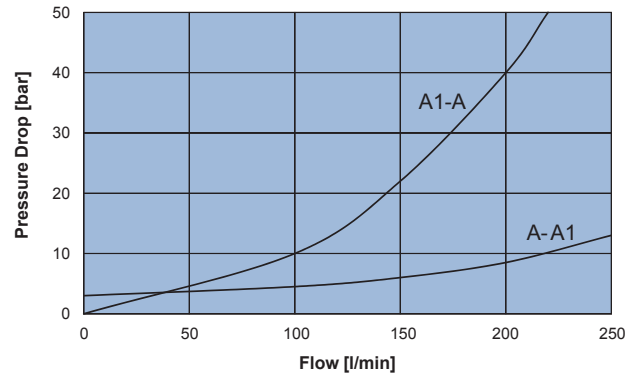
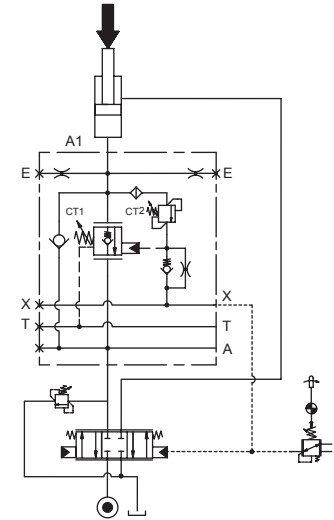
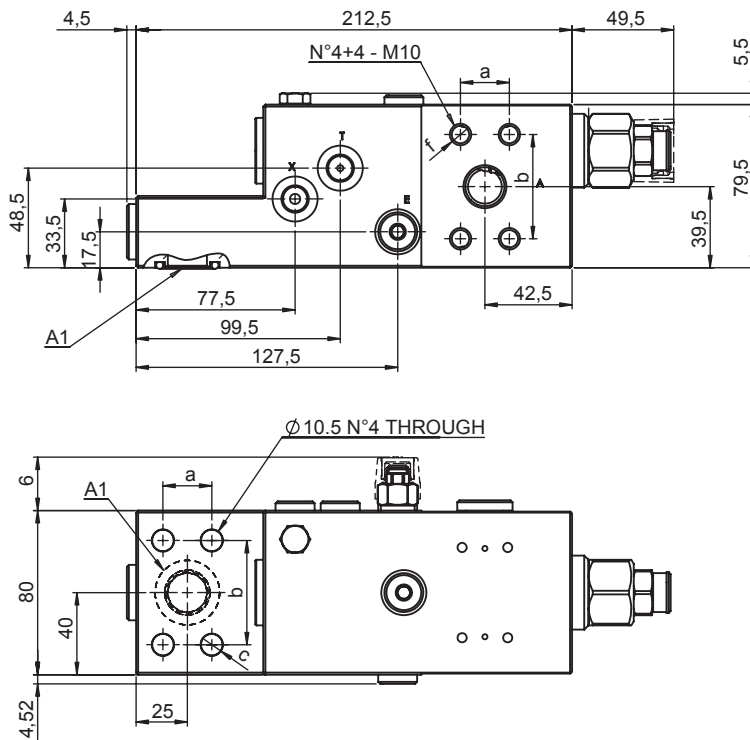
SPRING CT1		
Setting Range min.-max. [bar]	Pressure Increase [bar/turn]	Standard Setting @20 cc/min [bar]
4 5 - 16	4.5	7.5

SPRING CT2		
Setting Range min.-max. [bar]	Pressure Increase [bar/turn]	Standard Setting @4 l/min [bar]
4 200 - 410	250	350



LOAD LOWERING CONTROL VALVE - SAE FLANGED 3/4"-SAE6000

- Max flow. **250 l/min**
- Max working pressure **410 bar**
- Compensation. **Fully Compensated with drain line**
- Weight **8 Kg**
- Tamper proof cap CT1. **cod.9021030191**
- Tamper proof cap CT2 **cod.9021015101**



Flange	a	b	c	f	O-Ring
3/4"- SAE 6000	23.8	50.8	10.5	M 10	23.39x3.53 NBR 70°SH

Ordering code

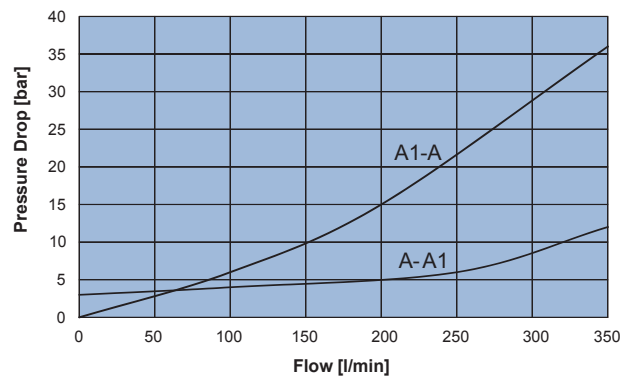
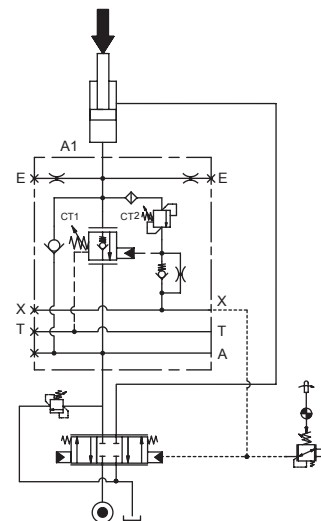
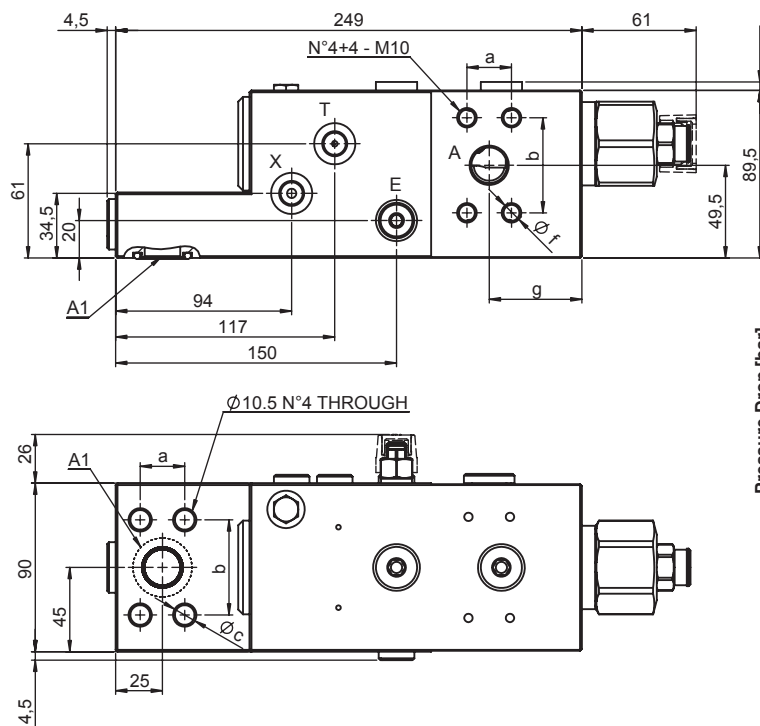
Y 1 5 1 3 Y **0 0**

PILOT RATIO		PORTS	
11	1:0 FINE METERING	65	
		A,A1	3/4 " - SAE 6000
		T-E-X	G 1/4"

SPRING CT1			SPRING CT2				
	Setting Range min.-max. [bar]	Pressure Increase [bar/turn]	Standard Setting @20 cc/min [bar]		Setting Range min.-max. [bar]	Pressure Increase [bar/turn]	Standard Setting @4 l/min [bar]
4	5 - 16	4,5	7,5	4	200 - 410	250	350

LOAD LOWERING CONTROL VALVE - SAE FLANGED 3/4"-SAE6000

- Max flow Y2513Y11446500 **350 l/min**
- Max working pressure **410 bar**
- Compensation **Fully Compensated with drain line**
- Weight **12 Kg**
- Tamper proof cap CT1 **cod.9021030191**
- Tamper proof cap CT2 **cod.9021015101**



Flange	a	b	c	f	O-Ring
3/4"- SAE 6000	23.8	50.8	10.5	M 10	24.99x3.53 NBR 70°SH

Ordering code

Y 2 5 1 3 Y **0 0**

PILOT RATIO	
11	1:0 - FINE METERING

PORTS	65
A,A1	3/4" - SAE 6000
T,E,X	G 1/4"

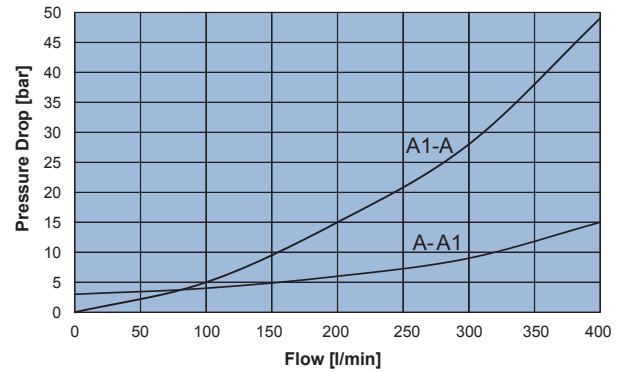
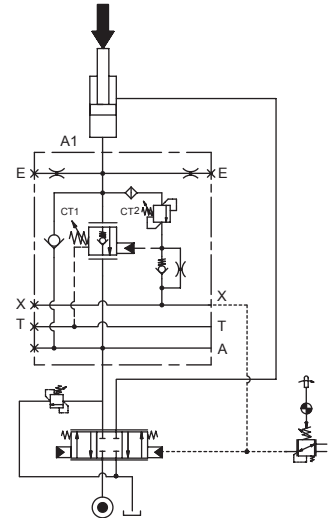
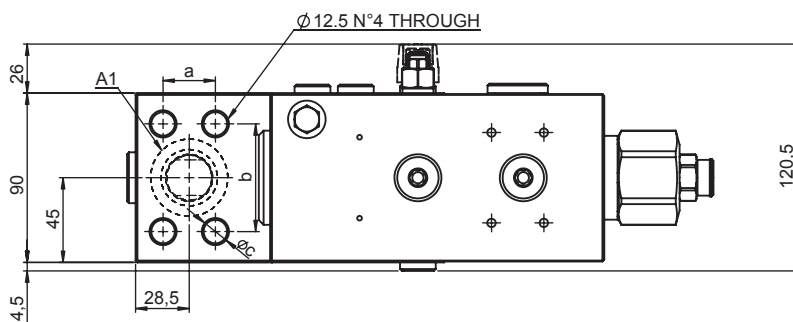
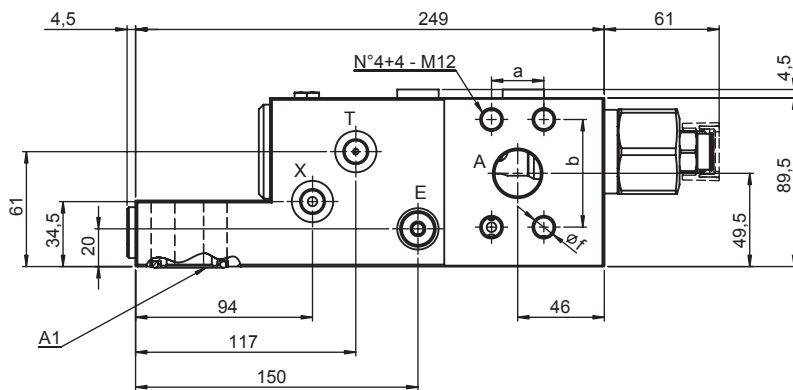
SPRING CT1		
Setting Range min.-max. [bar]	Pressure Increase [bar/turn]	Standard Setting @20 cc/min [bar]
4 5 - 14	2.3	7.5

SPRING CT2		
Setting Range min.-max. [bar]	Pressure Increase [bar/turn]	Standard Setting @4 l/min [bar]
4 200 - 410	250	350



LOAD LOWERING CONTROL VALVE - SAE FLANGED 1"-SAE6000

- Max flow Y2513Y11446600 **400 l/min**
- Max working pressure..... **410 bar**
- Compensation..... **Fully Compensated with drain line**
- Weight **12 Kg**
- Tamper proof cap CT1..... **cod.9021030191**
- Tamper proof cap CT2..... **cod.9021015101**



Flange	a	b	c	f	O-Ring
1"- SAE 6000	27.8	57.2	12.5	M 12	32.92x3.53 NBR 70°SH

Ordering code

Y 2 5 1 3 Y **0 0**

PILOT RATIO	
11	1:0 - FINE METERING

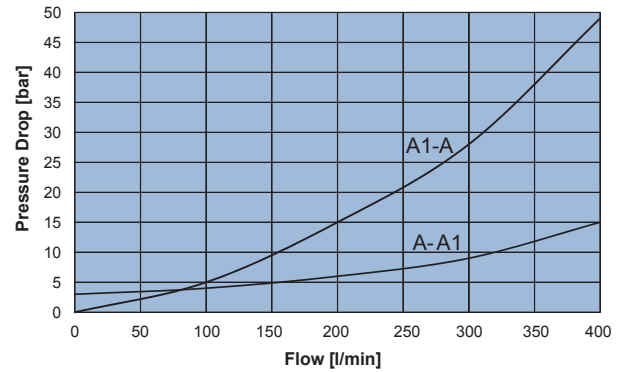
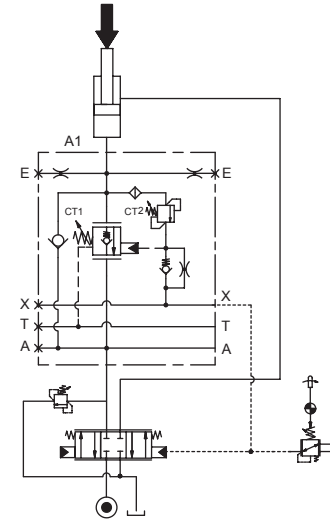
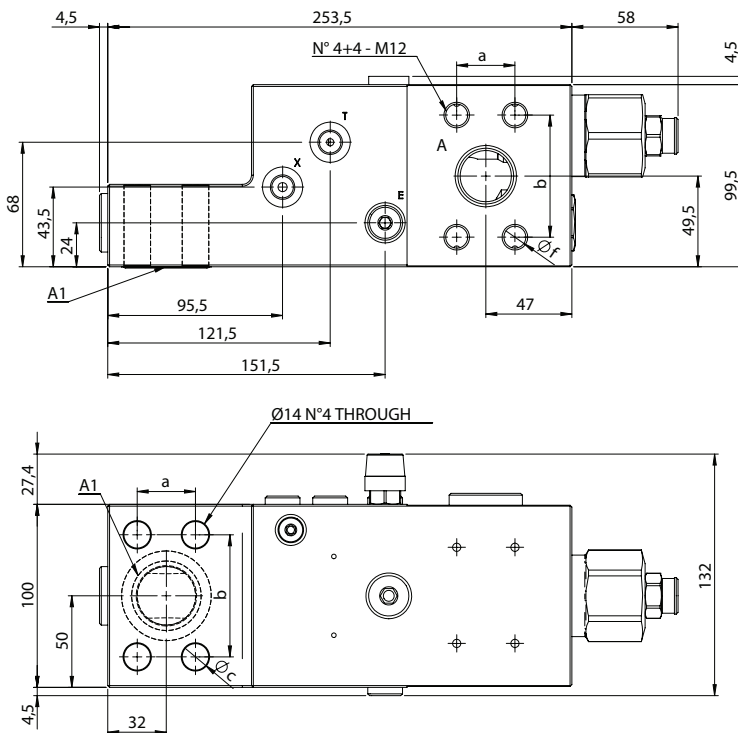
PORTS	
66	
A,A1	1"- SAE 6000
T,E,X	G 1/4"

SPRING CT1		
Setting Range min.-max. [bar]	Pressure Increase [bar/turn]	Standard Setting @20 cc/min [bar]
4 5 - 14	2.3	7.5

SPRING CT2		
Setting Range min.-max. [bar]	Pressure Increase [bar/turn]	Standard Setting @4 l/min [bar]
4 200 - 420	250	350

LOAD LOWERING CONTROL VALVE - SAE FLANGED 1"-1/4 - SAE6000

- Max flow Y2513Y11446700 **400 l/min**
- Max working pressure **410 bar**
- Compensation **Fully Compensated with drain line**
- Weight **15 Kg**
- Tamper proof cap CT1 **cod.9021030191**
- Tamper proof cap CT2 **cod.9021015101**



Flange	a	b	c	f	O-Ring
1"-1/4 SAE 6000	31.8	66.7	14.5	M 14	40.87x3.53 NBR 70°SH

Ordering code

Y 2 5 1 3 Y **0 0**

PILOT RATIO	
11	1:0 - FINE METERING

PORTS	
67	
A,A1	1"-1/4 - SAE 6000
T,E,X	G 1/4"

SPRING CT1		
	Setting Range min.-max. [bar]	Pressure Increase [bar/turn]
4	5 - 14	2.3
		Standard Setting @20 cc/min [bar]
		7.5

SPRING CT2		
	Setting Range min.-max. [bar]	Pressure Increase [bar/turn]
4	200 - 420	250
		Standard Setting @4 l/min [bar]
		350

