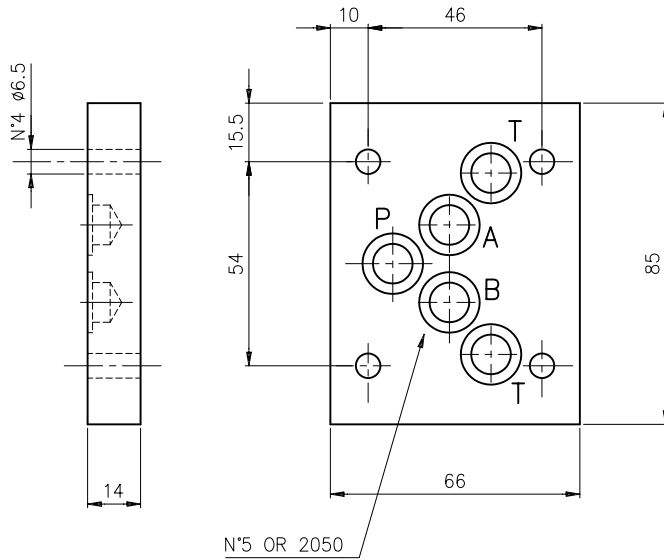
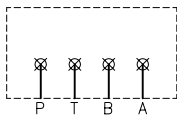


END PLATE EB105 - END PLATE EB2..5
ENDPLATTE EB105 - ENDPLATTE EB2..5

End plate. Weight = 0.5 kg
 Endplatte. Gewicht = 0.5 Kg
 Set of 10 pcs. / Satz von 10 Stk.

Hydr. symbol
 Symbol



Ordering code
 Bestell-Code

EB1 0 5

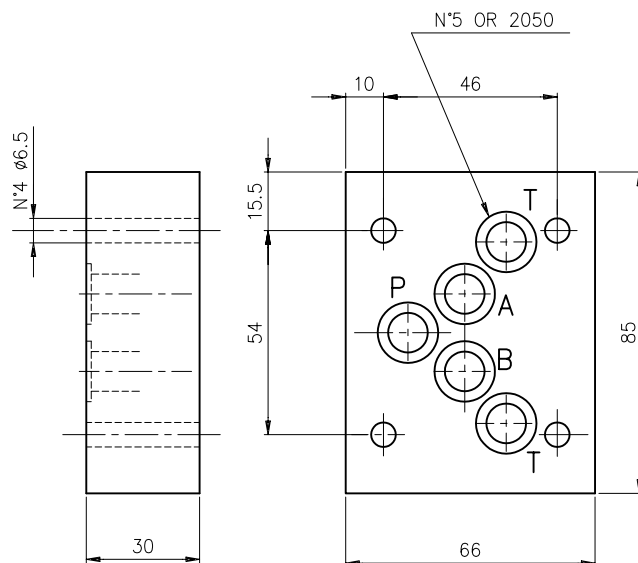
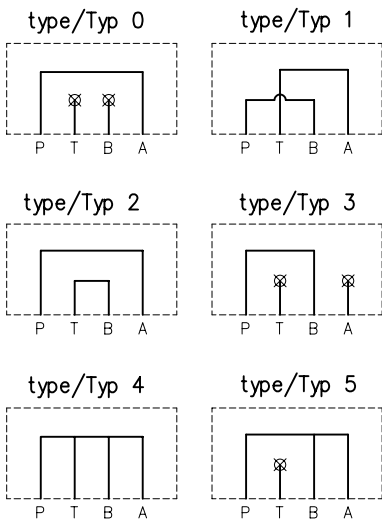
end plate/Endplatte = B1

CETOP 5

0 = P-T-B-A closed/geschlossen

End plate. Weight = 1.1 kg
 Verkettungsplatte. Gewicht = 1.1 Kg
 Set of 5 pcs. / Satz von 5 Stk.

Hydr. symbol
 Symbol



Ordering code
 Bestell-Code

EB2 * 5

end plate = B2
 Verkettungsplatte

CETOP 5

0 - 1 - 2 - 3 - 4
 see symbol / sehe Symbol

CETOP 5
 NG 10