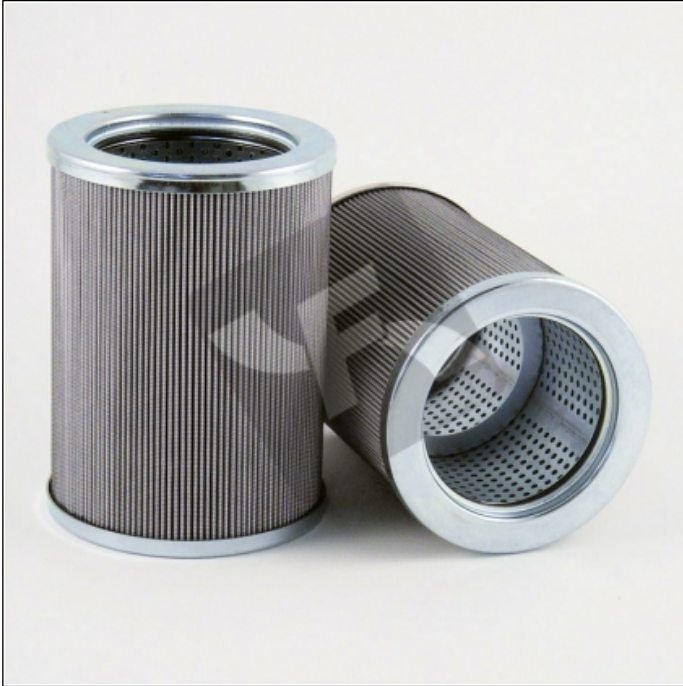


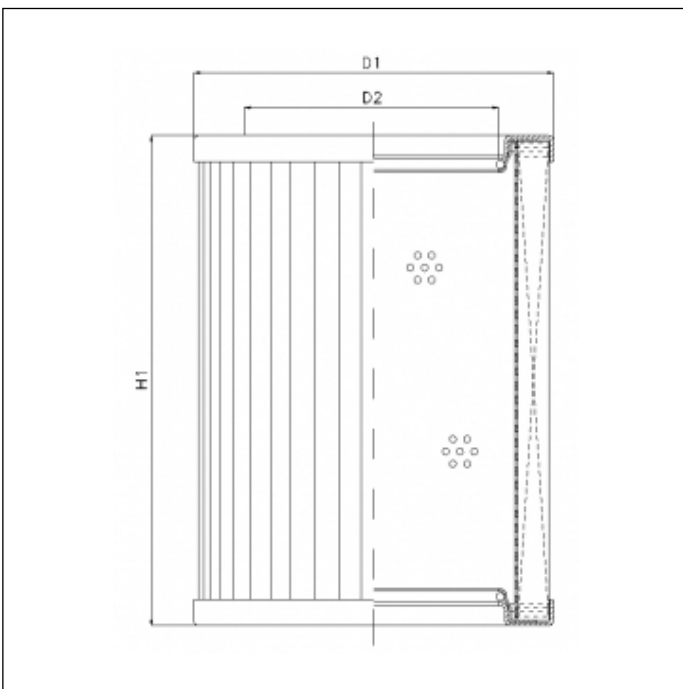
R430G10

printed on: 21-04-2024



TECHNICAL INFO

Media type	INORGANIC FIBERGLASS
Efficiency	10 $\mu\text{m}_{(c)}$ $\beta_x \geq 200$
Efficiency 1	12 $\mu\text{m}_{(c)}$ $\beta_x \geq 1000$
Flow direction	OUT-IN
Collapse Δp	10 bar
Seals	NBR
Temperature range	-30°C +100°C



OVERALL DIMENSIONS

D1	152,0 mm
D2	105,5 mm
H1	207,0 mm