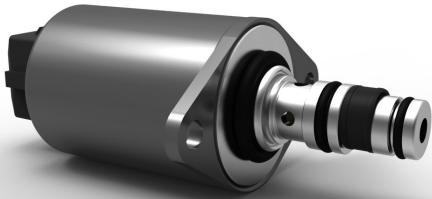
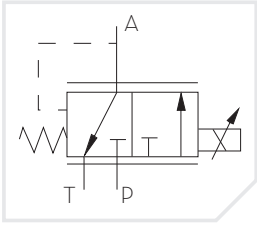


Proportional Pressure Reducing Valve PPCD04-NGPPRV

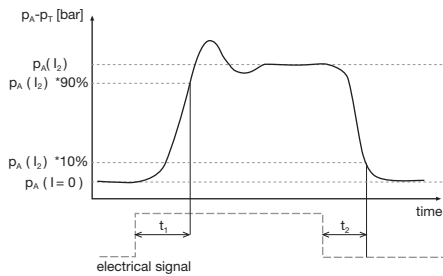


Model Code

| | | | | | | | | |
|-------------|-------------------------------|---------------|-------------|---|-------------------|--|---|---|
| PPCD 04 | -001 | -a | -a | -20 | -12 | -J | -H | -0 |
| Valve Style | Special Version up on request | Solenoid Type | Cavity Type | Control Pressure Range: 20 bar; 25 bar; 32 bar | Voltage: 12V; 24V | Connector: J AMP Jr Power-Timer; H NINBR; F FKM | Seal Material: N NBR; D Deutsch DT04-2P; L Lead Wires | Manual Override: 0 without; M with (only with connector type J) |

Step Response

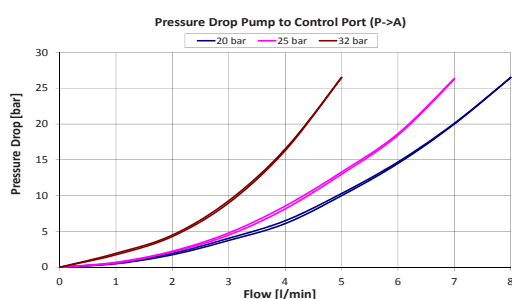
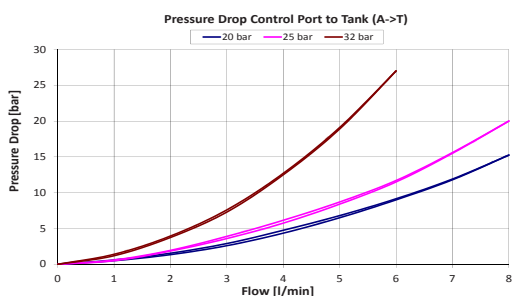
(50°C Oil Temperature) $t_1, t_2 < 50$ ms



Hydraulic Data

| | |
|---|---|
| Max Pressure (P, T) | pP = 50 bar, pT = 30 bar |
| Hysteresis (w/ PWM) | < 0.4 bar (pA=20) < 0.5 bar (pA=25) < 0.7 bar (pA=32) |
| Filter Screen | 125 µm |
| Contamination Level | Min Filtration: 20/18/15 According to ISO 4406 |
| Fluid | Mineral Oil According to DIN 51524 |
| Temperature Range Fluid | -40 to +105°C |
| Valve Specifications According to Thomas LHP-39 | |

Flow Characteristics



Electrical Data

| | | |
|----------------------------|---|-------------|
| Voltage | 12V | 24V |
| Resolution | 1500 mA | 750 mA |
| Resistance | 4.72 Ω ± 5% | 20.8 Ω ± 5% |
| Current Consumption (idle) | 24 mA (12V) 20 mA (24V) | |
| Type of Control | Current Control PWM 100 Hz Recommended | |
| Connector | AMP Junior Timer Deutsch Connector DT04-2P Lead wires | |
| Protection class | up to IP6K6 / IPX9K | |
| Conductor | Tinned copper strand UL 758 and CSA C 2.22 Material: CU-ETP1 acc. to DIN EN 13602:2002 | |
| Insulation | Insulation: Soft-PVC, unleaded UL 1581-Tab. 50.182, Shore -hardness A | |
| Cable Length | 500 mm | |

