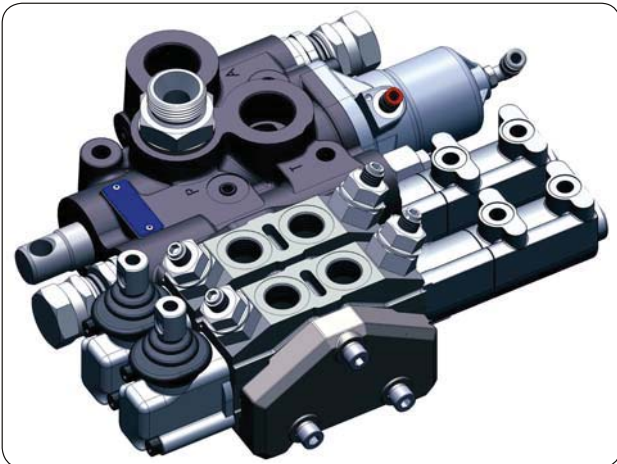
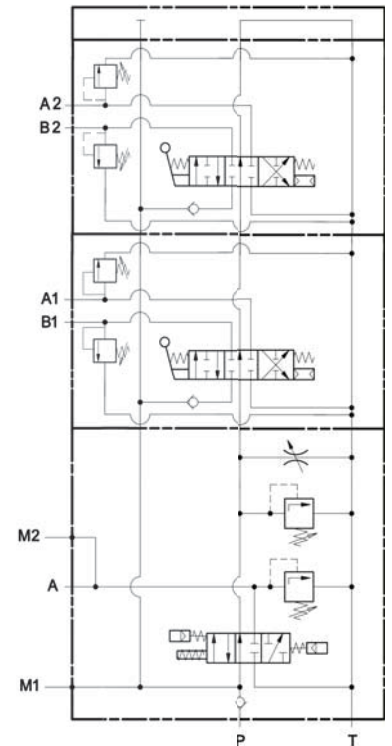


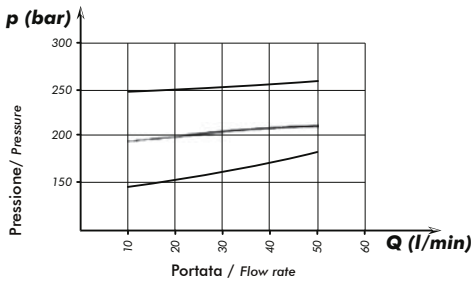
**DEVIATORE MODUL-GATE:
RIBALTABILE + 2 SEZIONI DOPPIO EFFETTO CON VALVOLA DI MASSIMA CODICE 121-016-10209**
**MODUL-GATE CONTROL VALVE:
MAIN VALVE + 2 DOUBLE ACTING SECTIONS WITH RELIEF VALVE CODE 121-016-10209**



Schema idraulico / Hydraulic scheme



Curva caratteristica p-Q valvola di massima distributore ausiliario
p-Q operating curve for pressure relief valve auxiliary valve



Scarico a serbatoio G 1" T
Return to Tank

Ingresso olio dalla pompa G 1" P
Oil input from the pump

Cilindro G 1" A
Cylinder

Prelievo pressione del cilindro G 1/8" M2
Port for cylinder pressure G 1/8"

Prelievo pressione della pompa G 1/8" M1
Port for pump pressure G 1/8"

Valvola di massima generale distributori ausiliari
Main relief valve for auxiliary valves

Comando meccanico distributore ausiliario
Mechanical control auxiliary valve

Comando pneumatico salita (Tubo 6)
Tipping pneumatic control (6mm air pipe)

Comando pneumatico discesa (Tubo 6)
Lowering pneumatic control (6mm air pipe)

Regolatore portata distributori ausiliari
Flow regulator auxiliary valves

Utilizzo ausiliario G 1/2" B1
Auxiliary port G 1/2"

Utilizzo ausiliario G 1/2" A1
Auxiliary port G 1/2"

Comandi pneumatici distributore ausiliario G 1/8"
Pneumatic controls auxiliary valves G 1/8"

Valvola di massima uscite ausiliarie. Campo taratura 130-350 bar. Taratura standard 150 bar
Auxiliary output relief valve. Pressure range 130-350 bar Standard pressure 150 bar

Molle di ricambio
Springs spare parts
134-992-60014 30/80 bar (bianca/white)
134-992-60023 80-130 bar (gialla/yellow)
134-992-60032 130/350 bar (verde/green)

502-3-726 (vite/screw)
501-8-045 (rondella/washer)

Coperchio di chiusura distributori ausiliari
Cover plate auxiliary valves
Cod. 134-992-10014

Cod. 134-992-00203