



RCM STACKABLE SINGLE AXIS LEVER REMOTE CONTROL

Hydraulic remote control RCM belongs to the wide range of Hydrocontrol products. Low operating efforts, low energy consumption and low maintenance make these hydraulic remote controls RCM ideal for piloting remote control directional valves, variable displacement pumps and motors, auxiliary valves, frictions and hydraulic brakes. Each hydraulic remote control is assembled with N.2 tie rod kits which include a tie rod, two nuts and two washers. It can be assembled up to 12 working sections.



TECHNICAL SPECIFICATIONS

Working section number: **1 - 12**

Max pressure: **60 bar**

Oil capacity: **12 l/min**

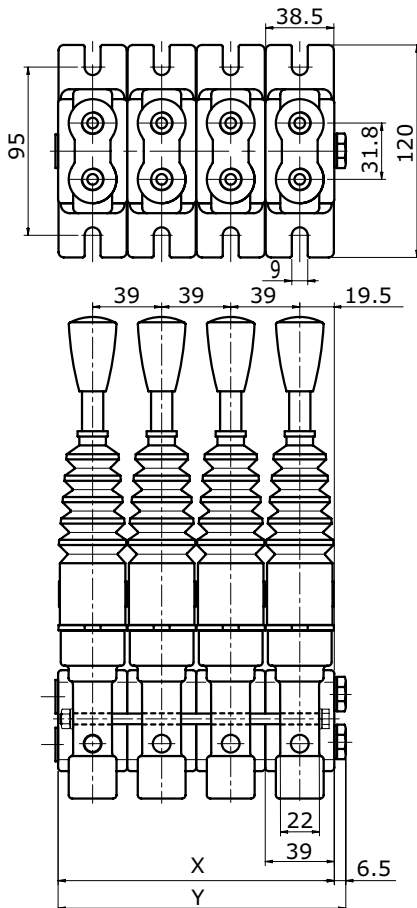
Weight RCM/1: **1,5 Kg**

Tie rod clamping torque: **14 Nm**

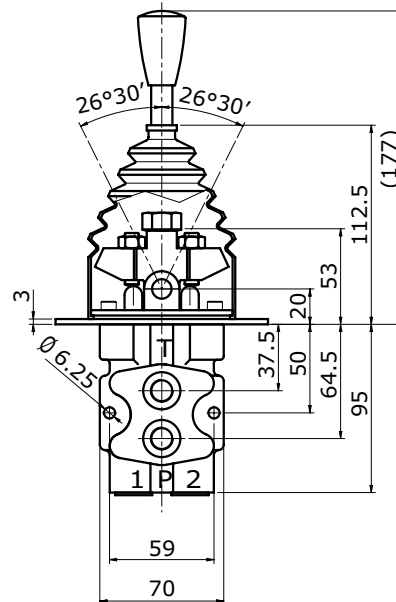
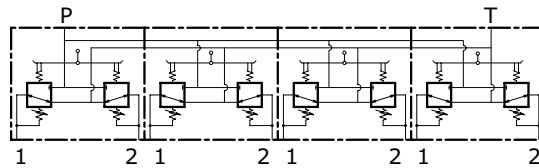
APPLICATIONS

Mini steer loaders, Backhoe loaders, Tractors

DIMENSIONS



HYDRAULIC SCHEMA

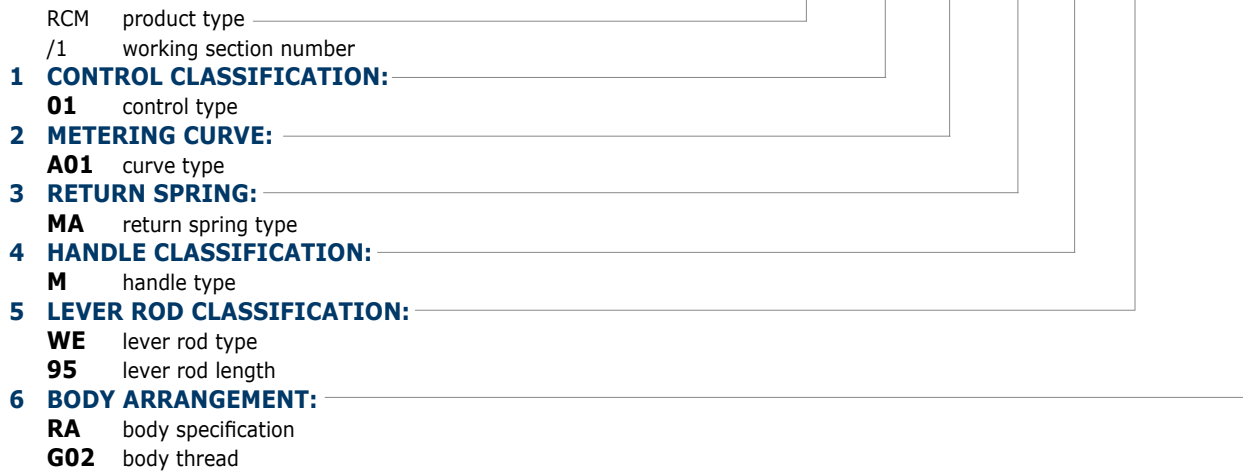


TYPE	/1	/2	/3	/4	/5	/6	/7	/8	/9	/10	/11	/12
X (mm)	39	78	117	156	195	234	273	312	351	390	429	468
Y (mm)	45,5	84,4	123,5	162,5	201,5	240,5	279,5	318,5	357,5	396,5	435,5	474,5
Weights (kg)	1,5	3	4,5	6	7,5	9	10,5	12	13,5	15	16,5	18

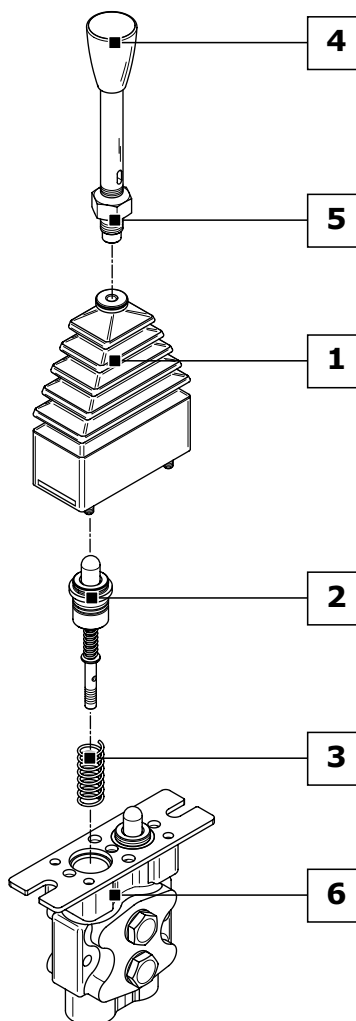


STACKABLE SINGLE AXIS LEVER REMOTE CONTROL **RCM**

ORDER EXAMPLE = RCM/1: 01 - A01 - MA - M - WE95 - RA G02



Ordering row 2 and 3, must be repeated for each port
 complete sample: **RCM/1: 01 A01 MA A01 MA A01 M WE95 RA G02**



1	CONTROL CLASSIFICATION: (page 24)
01	Return spring in neutral
02	Stroke end mechanical detent in position 1 and 2
03	Stroke end mechanical detent in position 1
04	Stroke end mechanical detent in position 2
2	METERING CURVE: (page 70)
A01	Linear metering curve with step
B01	Linear metering curve without step
C01	Broken line metering curve with step
D01	Broken line metering curve without step
3	RETURN SPRING: (page 79)
MA	Preload 25 N - End stroke load 48 N
MB	Preload 14 N - End stroke load 27 N
MC	Preload 73 N - End stroke load 135 N
MD	Preload 89 N - End stroke load 169 N
4	HANDLE CLASSIFICATION: (page 80)
A	Without micro-switch
B	With micro-switch to close
D	With dual micro-switch
M	Standard handle
5	LEVER ROD CLASSIFICATION: (page 26)
WE95	Standard lever for "M" handle (95 mm)
WE165	Standard lever for "M" handle (165 mm)
6	BODY ARRANGEMENT: (page 27)
RA G02	Standard Body (G 1/4 ports)
RA U02	Standard Body (9/16"-18 UNF ports)



RCM STACKABLE SINGLE AXIS LEVER REMOTE CONTROL

CONTROL KIT CLASSIFICATION

All controls installed on the remote control RCM are interchangeable. Lever rod type must be chosen according to different control kit (see quick reference guide pag. 27). The controls shown correspond to standard configurations; for different applications contact our Commercial Dept.

Code	Configuration	Schema	Description
01			Return spring in neutral
02			Stroke end mechanical detent in position 1 and 2
03			Stroke end mechanical detent in position 1
04			Stroke end mechanical detent in position 2
19			Return spring in neutral with micro-switch open in central position
31			Return spring in neutral with micro-switch closed in central position



STACKABLE SINGLE AXIS LEVER REMOTE CONTROL **RCM**

Code	Configuration	Schema	Description
25			Security handle in neutral
17			Security handle in neutral with micro-switch closed in central position
12			Security micro-handle in neutral with micro-switch open in central position
26			Friction
18			Friction with micro-switch closed in central position
13			Friction with micro-switch open in central position
27			Friction and security handle in neutral




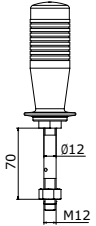
RCM STACKABLE SINGLE AXIS LEVER REMOTE CONTROL

MICROSWITCHES SPECIFICATIONS

Description	Value
Direct current load resistive	5 A / 30 Vdc
Direct current load inductive	3 A / 250 Vac
Alternative current load resistive	5 A / 30 Vdc
Alternative current load inductive	2 A / 250 Vac

LEVER ROD CLASSIFICATION

The lever rod kits applied to all the RCM hydraulic remote controls designed by Hydrocontrol change according to the type of control used and, above all, the type of handle. For improved clarity, all the possible lever rod configurations divided according to handle are listed here below. Straight and curved lever rods are available in several lengths and dimensions.

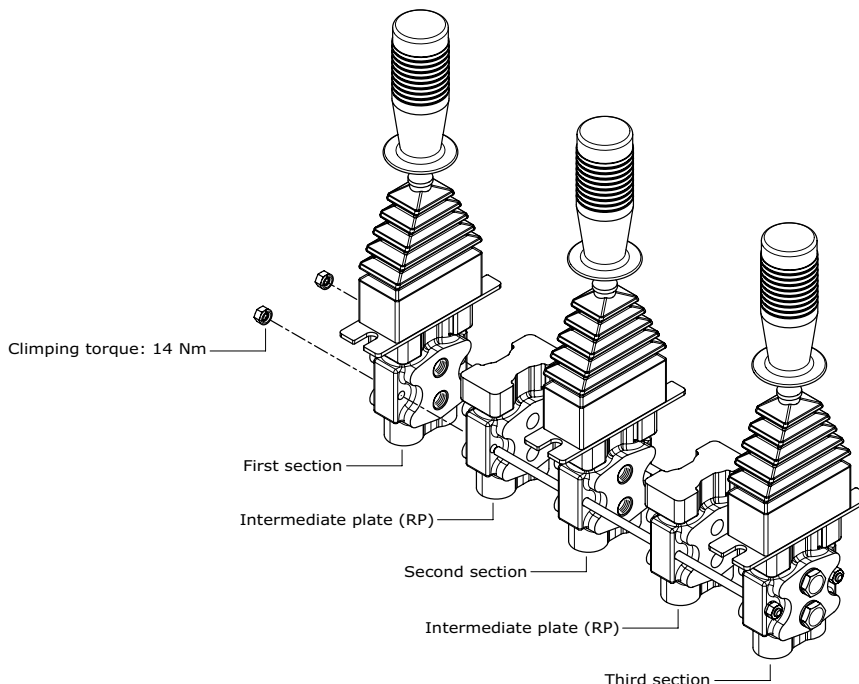
IDENTIFICATION ROD LEVER HANDLE "A-B-C-D" - QUICK REFERENCE GUIDE		Control type												
Code	Dimensional drawing	01	02	03	04	12	13	17	18	19	25	26	27	31
WA70		•	•	•	•		•		•	•				•
WQ70 (only for "A" handle)												•		

Handles type "A-B-C-D" are only available with RCM/1. To set up an RCM remote control with any number of sections between 2 and 12, an intermediate plate must be used identified by the order code RP.

ORDER EXAMPLE RCM/3 WITH "RP" INTERMEDIATE PLATE

RCM/3: 01-A01-MA-A WA70-RA G02 - **RP** - 01-A01-MA-A WA70-RA G02 - **RP** - 01-A01-MA-A WA70-RA G02

- 1) FIRST SECTION: _____
- 2) **INTERMEDIATE PLATE:** _____
- 3) SECOND SECTION: _____
- 4) **INTERMEDIATE PLATE:** _____
- 5) THIRD SECTION: _____





STACKABLE SINGLE AXIS LEVER REMOTE CONTROL **RCM**

IDENTIFICATION ROD LEVER HANDLE "M" - QUICK REFERENCE GUIDE														
Code	Dimensional drawing	Control type												
		01	02	03	04	12	13	17	18	19	25	26	27	31
WE95		•	•	•	•		•		•	•				•
WE165		•	•	•	•		•		•	•				•
WM95							•		•					
WM165							•		•					
WN95													•	•
WR95														•

BODY ARRANGEMENT

The hydraulic remote control RCM has only one setting body, the only variable is represented by a different thread.

Code	Configuration	Schema	Description
RA G02			Standard body with ports G 1/4
RA U02			Standard body with ports 9/16" - 18 UNF