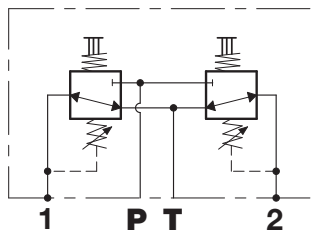
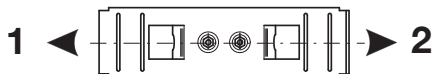


1	UTILIZZI
2	PORTS
	ANSCHLÜSSE
T	SERBATOIO
	TANK
	TANK
P	INGRESSO
	INLET
	DRUCKVERSORGUNG

DIREZIONI DI AZIONAMENTO
 DIRECTION OF ACTUATION
 BETÄTIGUNGSRICHTUNG

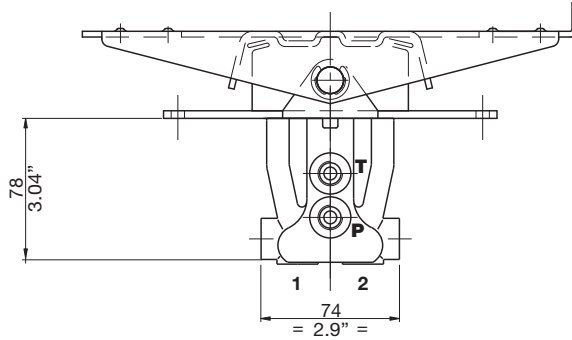




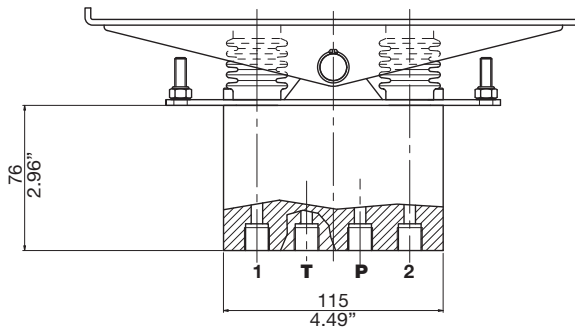
**MODELLI
MODELS
MODELLE**

HPCF

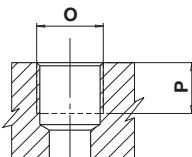
0 STANDARD
STANDARD
STANDARD



1 PASSO LUNGO (SOLO PER PEDALI 1 - 4)
LONG STEP (PEDALS 1 - 4 ONLY)
GROSSER WEG (NUR FÜR PEDALEN 1 - 4)

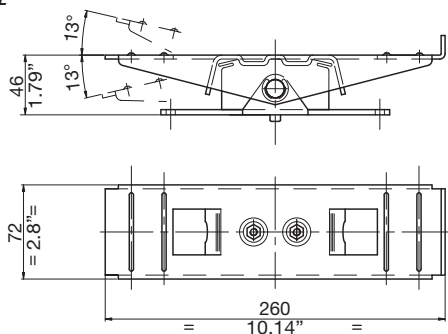


**BOCCHIE
PORTS
ANSCHLÜSSE**

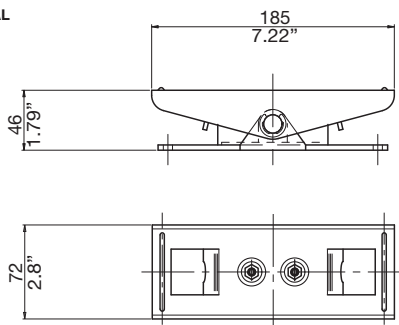


TIPO TYPE TYP	O		P	
		Nm	mm	in
G2	1/4"	17	13	0,47
U3	9/16-18 UNF	25	13	0,47

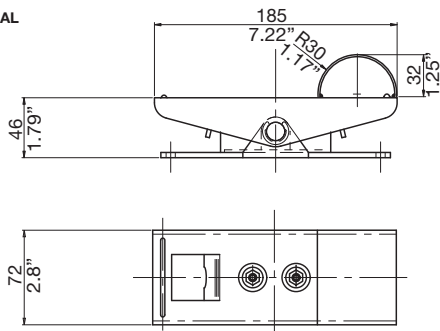
1 PEDALE BASCULANTE NORMALE
STANDARD TOGGLE PEDAL
NORMALES KIPPPEDAL



2 PEDALE CORTO NORMALE
STANDARD SHORT PEDAL
NORMALES KURZES PEDAL



3 PEDALE CORTO BOMBATO
CONVEX SHORT PEDAL
GEWÖLBTES KURZES PEDAL



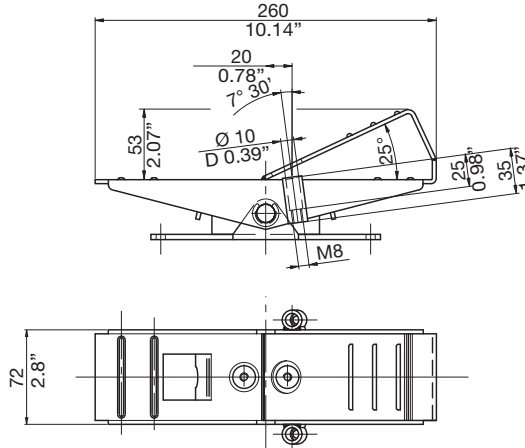


**PEDALI
PEDALS
PEDALE**

HPCF

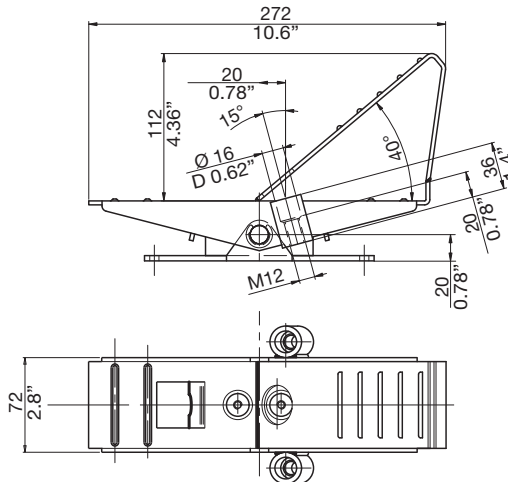
4

PEDALE CON ZEPPA
PEDAL WITH SHIM
KURZES KEILPEDAL



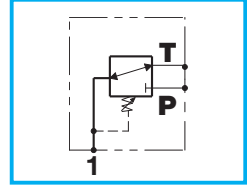
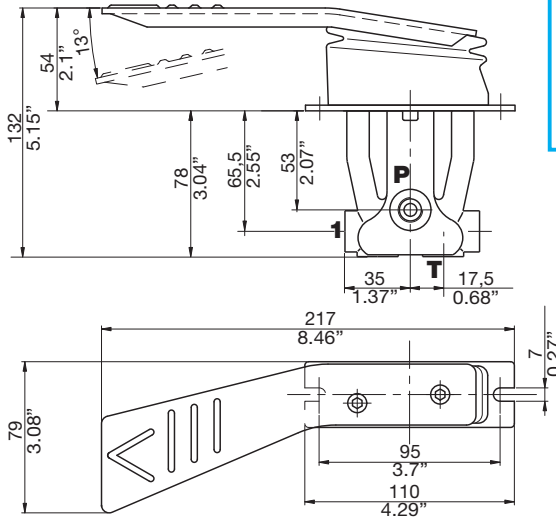
5

PEDALE CON ZEPPA ALTA
PEDAL WITH HIGH SHIM
PEDAL MIT ANGWINKELTEM KEIL



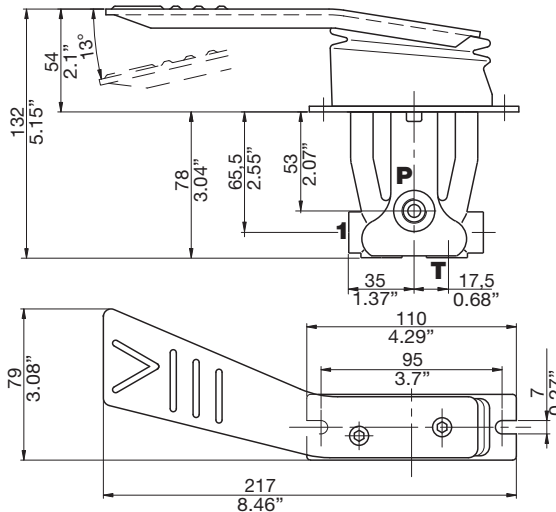
6

PEDALE SINGOLO DESTRO
SINGLE RIGHT PEDAL
EINZELNES PEDAL RECHTS



7

PEDALE SINGOLO SINISTRO
SINGLE LEFT PEDAL
EINZELNES PEDAL LINKS



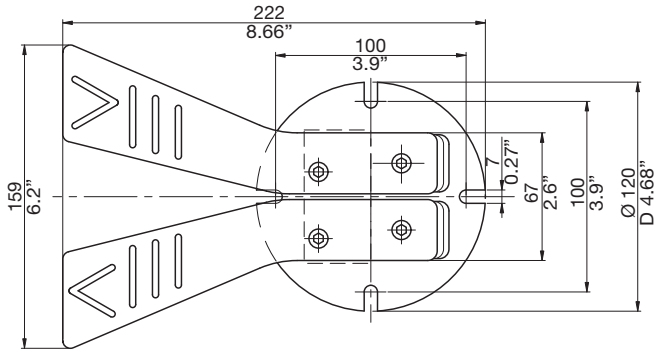
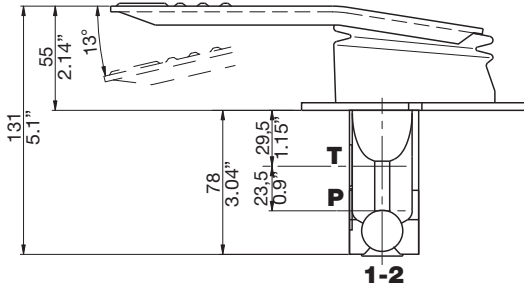
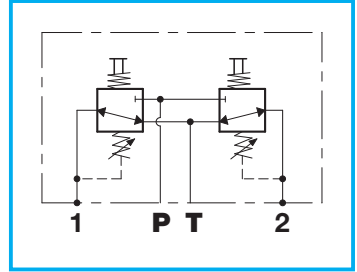


PEDALI
PEDALS
PEDALE

HPCF

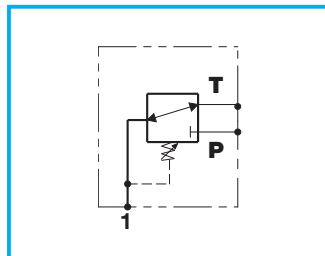
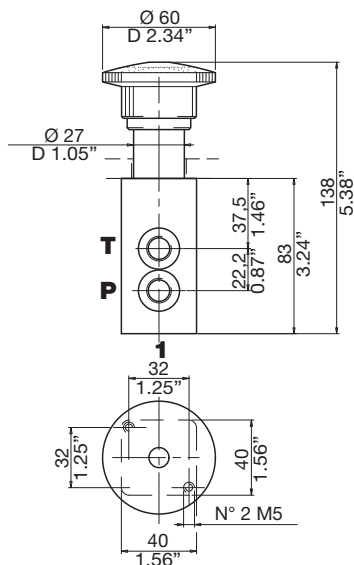
8

DOPPIO PEDALE
DOUBLE PEDAL
DOPPELPEDAL

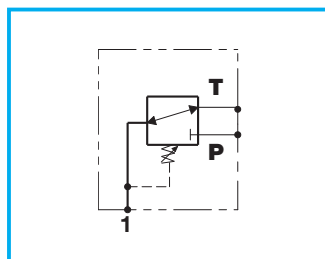
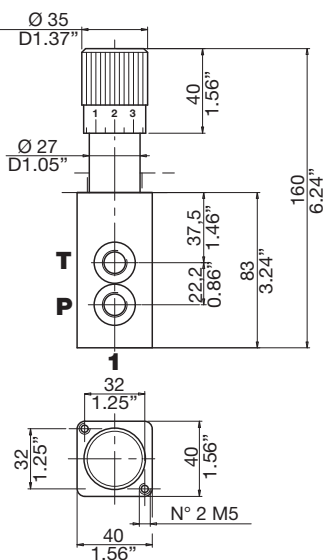


9 PEDALE A PULSANTE
BUTTON PEDL
TASTERPEDAL

CORSA: 8.3 mm
STROKE: 8.3 mm
HUB: 8.3 mm



R REGOLATORE DI PRESSIONE
PRESSION REGULATOR
DRUCKREGLER



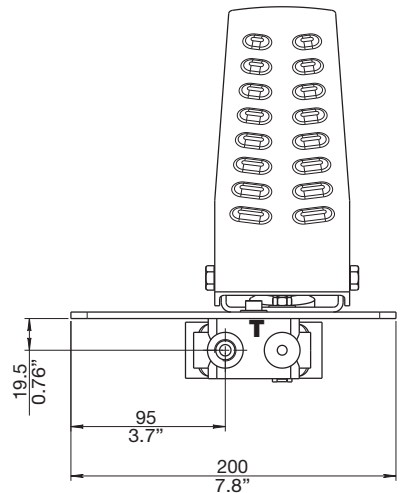
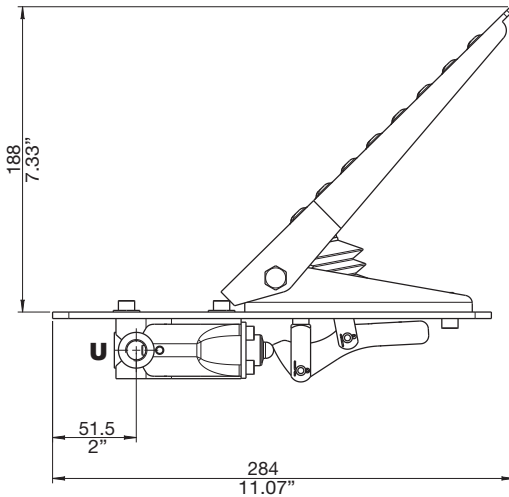
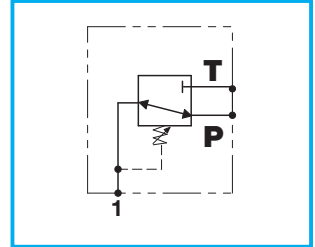
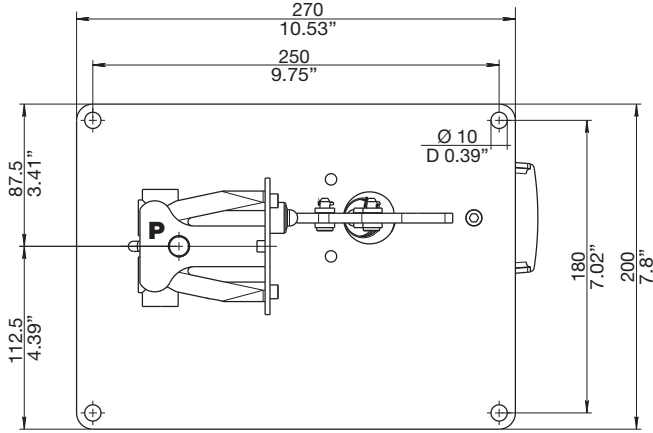


**PEDALI
PEDALS
PEDALE**

HPCF

V

**PEDALE A LEVA LUNGO
LONG TOGGLE LEVER PEDAL
LANGES PEDAL MIT HEBELBETÄTIGUNG**



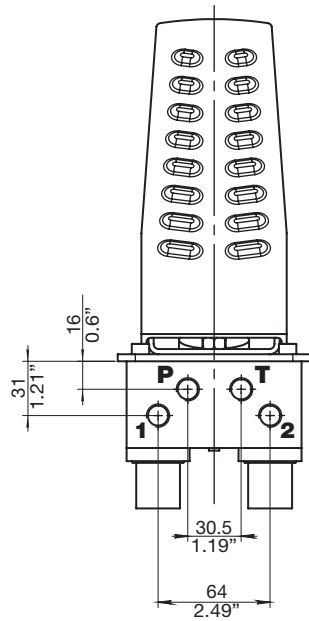
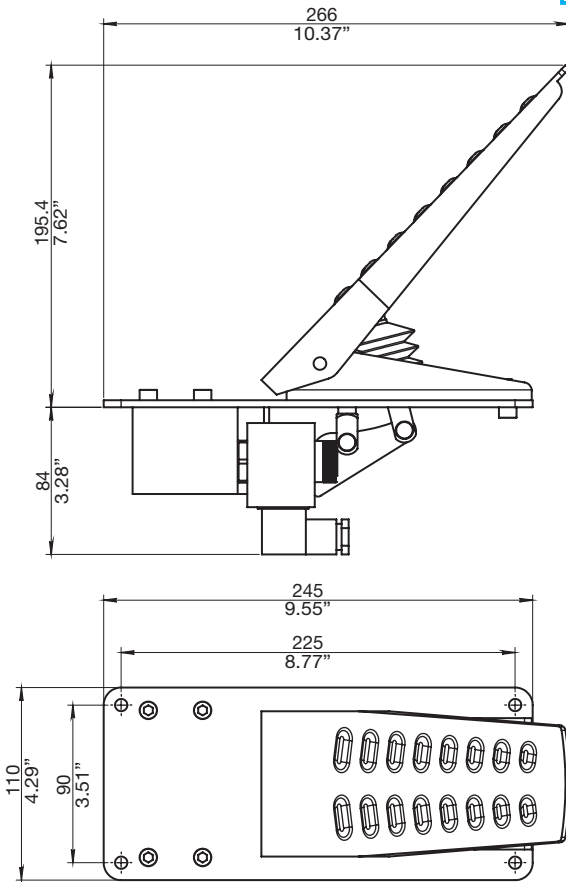
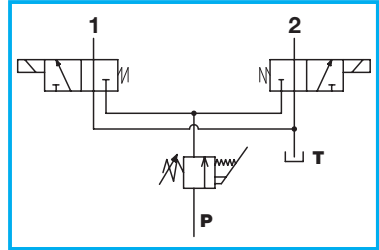
Disponibile a richiesta
versione positiva

Positive version

on request

Auf Wunsch ist die spiegelbildliche
Ausführung erhältlich

W PEDALE A LEVA LUNGO CON ELETTROVALVOLE SELETTRICI
LONG TOGGLE LEVER PEDAL WITH DIRECTIONAL ELECTROVALVES
PEDAL MIT ELEKTIRSCH GESTEUERTEN WAHLVENTILEN

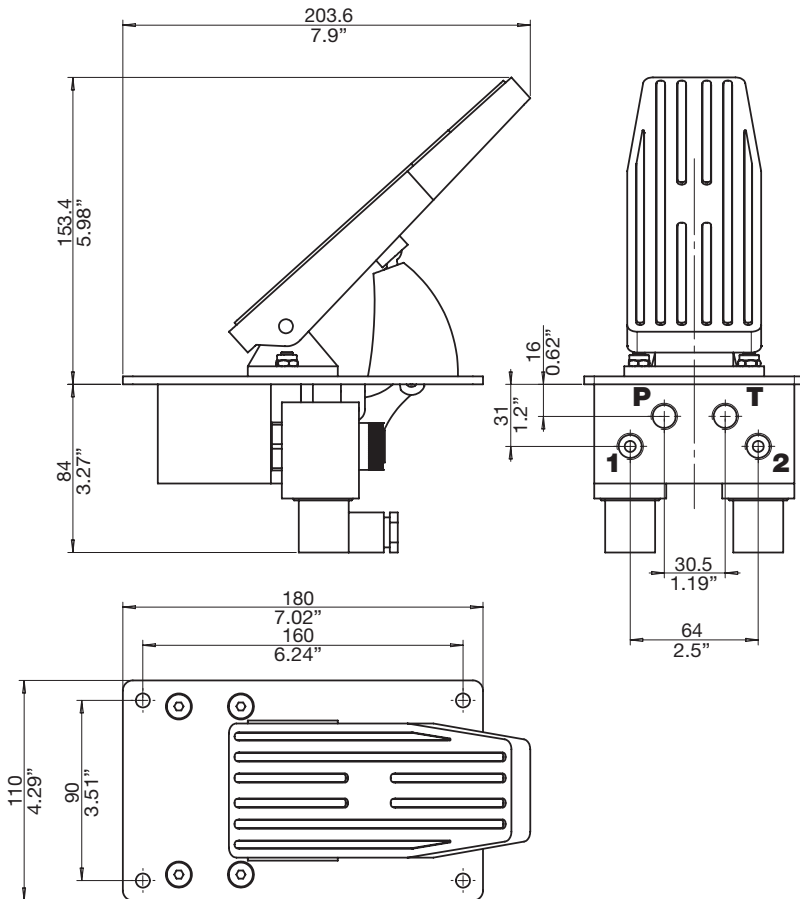
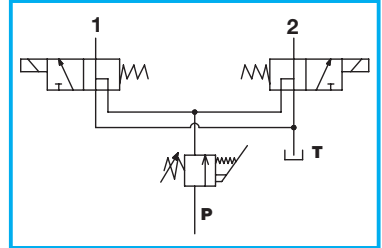




PEDALI
PEDALS
PEDALES

HPCF

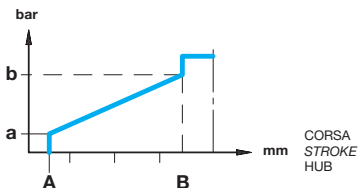
D PEDALE A LEVA IN RESINA CON ELETTROVALVOLE SELETTRICI
RESIN TOGGLE LEVER PEDAL WITH DIRECTIONAL ELECTROVALVES
HARZ PEDAL MIT ELEKTIRSCH GESTEUERTEN WAHLVENTILEN



CURVE DI REGOLAZIONE
PRESSURE CURVES
REGELKURVEN

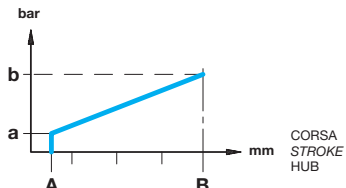
HPCF

P.. CON STEP
 WITH STEP
 MIT SPRUNG



CURVE DI REGOLAZIONE RAMPA SINGOLA
SINGLE SLOPE PRESSURE CURVES
EIN-RAMPEN-REGELKURVEN

R.. SENZA STEP
 WITHOUT STEP
 OHNE SPRUNG



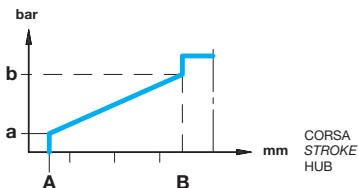
CURVE DI REGOLAZIONE
ADJUSTMENT CURVES
REGELKURVEN

TIPO TYPE TYP	PRESSIONE PRESSURE DRUCK					
	a		b			
P	bar	psi	bar	psi	bar	psi
P00	2	29	16	232		
P01	3	43	18	261		

TIPO TYPE TYP	PRESSIONE PRESSURE DRUCK					
	a		b			
R	bar	psi	bar	psi	bar	psi
R00	2	29	18	261		
R01	3	44	22	290		

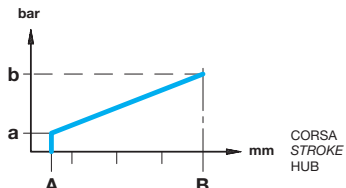
CURVE DI REGOLAZIONE PER 9, R, D, HPCF1
PRESSURE CURVES FOR 9, R, D, HPCF1
REGELKURVEN FÜR 9, R, D, HPCF1

S.. CON STEP
 WITH STEP
 MIT SPRUNG



CURVE DI REGOLAZIONE RAMPA SINGOLA
SINGLE SLOPE PRESSURE CURVES
EIN-RAMPEN-REGELKURVEN

L.. SENZA STEP
 WITHOUT STEP
 OHNE SPRUNG



CURVE DI REGOLAZIONE
ADJUSTMENT CURVES
REGELKURVEN

TIPO TYPE TYP	PRESSIONE PRESSURE DRUCK				TIPO TYPE TYP	PRESSIONE PRESSURE DRUCK			
	a		b			a		b	
S	bar	psi	bar	psi	L	bar	psi	bar	psi
S00	2	29	16	232	L00	2	29	18	261
S01	5	73	20	290	L01	5	73	22	319
S02	6,5	94	24,5	355	L02	6,5	94	26,5	384
S04	3	46	17	249	L04	3	46	19	276
S08	5	73	16	232	L08	5	73	18	261
S11	4	58	15	218	L11	4	58	15	218
S12	1,5	22	7	102	L12	1,5	22	9	131
S13	5	73	28	406	L13	5	73	30	435



ISTRUZIONI PER L'ORDINAZIONE
ORDERING INSTRUCTIONS
BESTELLANLEITUNG

HPCF

HPCF

0

G2

1

8

S

P01

00

000

SERIE
SERIES
SERIE

MODELLI
MODELS
MODELLE

0 = Standard
1 = Passo lungo (solo per pedale 1-4)
Long step (pedal 1-4 only)
Grosser Weg (nur für pedal 1-4)

BOCCHIE STANDARD
STANDARD PORT
STANDARD ANSCHLÜSSE

G2 = 1/4" gas-BSPP
U3 = SAE 9/16"-18UNF

GUARNIZIONI
SEALS
DICHTUNGEN

1 - NBR
2 - Viton

POSIZIONATORE
POSITIONER
RASTER

S = Ritorno a molla
al centro
Centre
Spring-back
Federzentriert

VERSIONI SPECIALI
SPECIAL VERSIONS
SONDERAUSFÜHRUNGEN

000 = Nessuna esecuzione speciale
001 = Frecche invertite (solo doppi pedali)
024 = Pedale negativo con micro tipo V
000 = No special execution
001 = *Inverted indicators (double pedals only)*
024 = Negative pedal with type V switch
000 = Keine Sonderausführung
001 = Umgekehrt (nur für Doppelpedale)
024 = Negatives Pedal mit Mikroschalter Typ V

COMANDI ELETTRICI
ELECTRIC CONTROLS
ELEKTROSTEUERUNGEN

00 = Nessun comando elettrico
01 = Micro di zero 12Vdc x 2A (solo per tipi 6,7,V)
02 = Micro di zero doppio 12Vdc x 2A (solo per tipo 8)
00 = No power control
01 = Neutral switch 12 Vdc x 2A (only for type 6,7,V)
02 = Double neutral switch 12Vdc x 2A (only for type 8)
00 = Keine elektrische Steuerung
01 = Neutral switch 12 Vdc x 2A (only for type 6,7,V)
02 = Double neutral switch 12Vdc x 2A (only for type 8)

CURVE
CURVES
KURVEN

Vedere tabella pag. 28
See table pag. 28
Siehe Tabelle Seite 28

TIPI DI PEDALI
PEDAL TYPE
PEDAL TYP

0 = Senza pedale
1 = Pedale basculante normale
2 = Pedale corto normale
3 = Pedale corto bombato
4 = Pedale con zeppa
5 = Pedale con zeppa alta
6 = Pedale singolo destro
7 = Pedale singolo sinistro
8 = Doppio pedale
9 = Pedale a pulsante
R = Regolatore di pressione
W = Pedale a leva lungo con elettrovalvole elettrifici
V = Pedale a leva lungo
D = Pedale in resina a leva con elettrovalvole elettrifici

0 = Without pedal
1 = Standard toggle pedal
2 = Standard short pedal
3 = Convex short pedal
4 = Pedal with shim
5 = Pedal with high shim
6 = Single right pedal
7 = Single left pedal
8 = Double pedal
9 = Button pedal
R = Pression regulator
W = Long toggle lever pedal with directional electrovalves
V = Single long toggle lever pedal
D = Resin toggle lever pedal with directional electrovalves

0 = Ohne Pedal
1 = Normales Kipppedal
2 = Normales kurzes Pedal
3 = Gewölbtes kurzes Pedal
4 = Kurzes Keilpedal
5 = Pedal mit angewinkeltem Keil
6 = Einzelnes Pedal rechts
7 = Einzelnes Pedal links
8 = Doppelpedal
9 = Tasterpedal
R = Pression regulator
W = Langes pedal mit elektrisch gesteuerten wahlventilen
V = Langes pedal mit hebelbetätigung
D = Harz pedal mit elektrisch gesteuerten wahlventilen