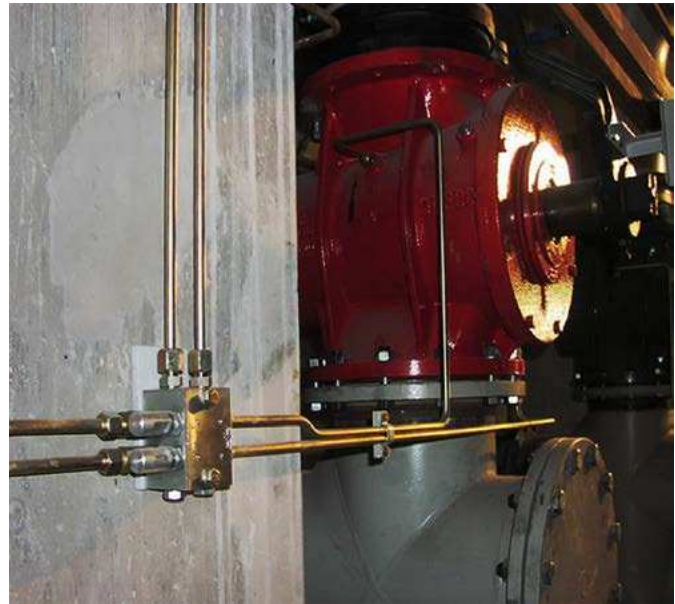
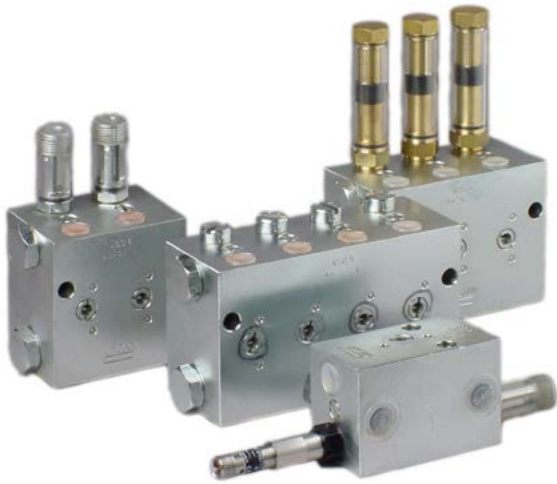


Metering device

VSG



Description

The durable, galvanized steel VSG metering devices are designed for dual-line systems with pressures of up to 400 bar (5 800 psi). These metering devices are available with up to eight outlets, and each pair of outlets is equipped with an indicator pin for visual monitoring. Also, the VSG metering devices are available with low-wear proximity switches, or piston detectors, for electrical monitoring (except VSG-D version). Additional features include rust-resistant material or rust- and acid-resistant material.

Features and benefits

- Easy cross-porting with external screw to combine
- Solid-block construction for durability and error-free exchange
- Operates effectively in a wide range of temperatures
- Easy to monitor

Applications

- Steel plants
- Cement plants
- Mining excavators

Technical data

Function principle	metering devices
Outlets	1-8
Operating temperature	KR-..., KD, D: max. +80 °C, +176 °F MD, KR-FKM: max. +120 °C, +248 °F
Lubricant	grease up to NLGI 3, oil with a viscosity of min. 20 mm ² /s
Operating pressure	max. 400 bar, 5 800 psi
Materials	carbon steel galvanized or stainless steel
Metering quantity per stroke	0-2,2 cm ³ , 0-0.13 in ³ or fixed output Version D: 0,55; 1,1; 1,65; 2,2 cm ³ , 0,033; 0,067; 0,01; 0,13 in ³ order numbers on request
Main line connection inlet	G 3/8, 3/8 NPTF
Outlet connection	G 1/4, 1/4 NPTF
Dimensions	min. 148 × 94 × 54 mm max. 148 × 190 × 54 mm min. 5.83 × 3.70 × 2.13 in max. 5.83 × 7.48 × 2.13 in

NOTE

Further technical information, technical drawings, accessories, spare parts or product function descriptions are available on SKF.com/lubrication.

3D

skf-lubrication.partcommunity.com/3d-cad-models

Metering device

VSG

VSG		Outlets	Material Steel galvanized	Stainless steel 1.4305/303	Stainless steel 1.4571/316Ti	Indicator pin adjustable output	
Order number BSPP	NPTF					KR	FKM U-cup seal
620-40022-1	620-40022-2	1	•	–	–	•	–
620-40015-1	620-40015-2	2	•	–	–	•	–
620-40022-3	620-40022-4	3	•	–	–	•	–
620-40015-3	620-40015-4	4	•	–	–	•	–
620-40022-5	620-40022-6	5	•	–	–	•	–
620-40015-5	620-40015-6	6	•	–	–	•	–
620-40022-7	620-40022-8	7	•	–	–	•	–
620-40015-7	620-40015-8	8	•	–	–	•	–
620-40567-1	–	1	–	•	–	•	–
620-40567-2	–	2	–	•	–	•	–
620-40567-3	–	3	–	•	–	•	–
620-40567-4	–	4	–	•	–	•	–
620-40567-5	–	5	–	•	–	•	–
620-40567-6	–	6	–	•	–	•	–
620-40567-7	–	7	–	•	–	•	–
620-40567-8	–	8	–	•	–	•	–
620-40839-1	–	1	–	–	•	•	•
620-40839-2	–	2	–	–	•	•	•
620-40839-3	–	3	–	–	•	•	•
620-40839-4	–	4	–	–	•	•	•
620-40839-5	–	5	–	–	•	•	•
620-40839-6	–	6	–	–	•	•	•
620-40839-7	–	7	–	–	•	•	•
620-40839-8	–	8	–	–	•	•	•
620-40525-2	–	1	•	–	–	•	•
620-40525-1	–	2	•	–	–	•	•
620-40525-3	–	3	•	–	–	•	•
620-40525-4	–	4	•	–	–	•	•
620-40525-5	–	5	•	–	–	•	•
620-40525-6	–	6	•	–	–	•	•
620-40525-7	–	7	•	–	–	•	•
620-40525-8	–	8	•	–	–	•	•

Metering device

VSG

Order numbers VSG

Connection thread		Outlets	Material Steel galvanized	Indication and monitoring		Adapter for limit switch KA ¹⁾	Limit switch KS	Indicator pin; fixed output; metering screws KD ²⁾	Metering screws D ²⁾
BSP	NPTF			Indicator pin adjustable KR	Piston detector NP				
620-40733-1	-	1	•	•	•	-	-	-	-
620-40733-2	-	2	•	•	•	-	-	-	-
620-40733-3	-	3	•	•	•	-	-	-	-
620-40733-4	-	4	•	•	•	-	-	-	-
620-40733-5	-	5	•	•	•	-	-	-	-
620-40733-6	-	6	•	•	•	-	-	-	-
620-40733-7	-	7	•	•	•	-	-	-	-
620-40733-8	-	8	•	•	•	-	-	-	-
620-40605-1	-	1	•	•	-	•	-	-	-
620-40605-2	-	2	•	•	-	•	-	-	-
620-40605-3	-	3	•	•	-	•	-	-	-
620-40605-4	-	4	•	•	-	•	-	-	-
620-40027-1	620-40027-2	1	•	•	-	-	•	-	-
620-40027-3	620-40027-4	2	•	•	-	-	•	-	-
620-40027-5	620-40027-6	3	•	•	-	-	•	-	-
620-40027-7	620-40027-8	4	•	•	-	-	•	-	-
620-40028-1	620-40028-2	5	•	•	-	-	•	-	-
620-40028-3	620-40028-4	6	•	•	-	-	•	-	-
620-40028-5	620-40028-6	7	•	•	-	-	•	-	-
620-40028-7	620-40028-8	8	•	•	-	-	•	-	-
620-40023-1	620-40023-2	1	•	-	-	-	-	•	-
620-40023-3	620-40023-4	2	•	-	-	-	-	•	-
620-40023-5	620-40023-6	3	•	-	-	-	-	•	-
620-40023-7	620-40023-8	4	•	-	-	-	-	•	-
620-40024-1	620-40024-2	5	•	-	-	-	-	•	-
620-40024-3	620-40024-4	6	•	-	-	-	-	•	-
620-40024-5	620-40024-6	7	•	-	-	-	-	•	-
620-40024-7	620-40024-8	8	•	-	-	-	-	•	-
620-40025-1	620-40025-2	1	•	-	-	-	-	-	•
620-40025-3	620-40025-4	2	•	-	-	-	-	-	•
620-40025-5	620-40025-6	3	•	-	-	-	-	-	•
620-40025-7	620-40025-8	4	•	-	-	-	-	-	•
620-40026-1	620-40026-2	5	•	-	-	-	-	-	•
620-40026-3	620-40026-4	6	•	-	-	-	-	-	•
620-40026-5	620-40026-6	7	•	-	-	-	-	-	•
620-40026-7	620-40026-8	8	•	-	-	-	-	-	•

¹⁾ thread M12x1

²⁾ fixed output 0,55; 1,1; 1,65; 2,2 cm³; 0,033; 0,067; 0,01; 0,13 in³

Check valves

Order number	Tube	Designation
	∅ mm	
223-13052-1	6	GERV 6-S G 1/4 AVCF
223-13052-2	8	GERV 8-L G 1/4 AVCF
223-13052-3	10	GERV 10-L G 1/4 AVCF

Metering device

VSG

VSG-MD.. , with connection thread BSPP

Order number	Outlets	Material				Metering quantity max.	
			Metering device	Regulating sleeve	Protection cap	cm ³	in ³
620-41081-7	1	steel, galvanized	brass	brass	brass	2,20	0.13
620-41124-1	1	steel, galvanized	brass	brass	plastic	2,20	0.13
620-41081-4	2	steel, galvanized	brass	brass	brass	2,20	0.13
620-41124-2	2	steel, galvanized	brass	brass	plastic	2,20	0.13
620-41124-3	3	steel, galvanized	brass	brass	plastic	2,20	0.13
620-41081-8	3	steel, galvanized	brass	brass	brass	2,20	0.13
620-41081-5	4	steel, galvanized	brass	brass	brass	2,20	0.13
620-41124-4	4	steel, galvanized	brass	brass	plastic	2,20	0.13
620-41081-6	6	steel, galvanized	brass	brass	brass	2,20	0.13
620-41124-6	6	steel, galvanized	brass	brass	plastic	2,20	0.13
620-41081-1	8	steel, galvanized	brass	brass	brass	2,20	0.13
620-41133-1	1	stainless steel, 1.4571	stainless steel, 1.4571	stainless steel, 1.4571	stainless steel, 1.4571	2,20	0.13
620-41133-9	2	stainless steel, 1.4571	stainless steel, 1.4571	stainless steel, 1.4571	stainless steel, 1.4571	2,20	0.13
620-41133-3	3	stainless steel, 1.4571	stainless steel, 1.4571	stainless steel, 1.4571	stainless steel, 1.4571	2,20	0.13
620-41133-5	4	stainless steel, 1.4571	stainless steel, 1.4571	stainless steel, 1.4571	stainless steel, 1.4571	2,20	0.13
620-41133-7	6	stainless steel, 1.4571	stainless steel, 1.4571	stainless steel, 1.4571	stainless steel, 1.4571	2,20	0.13
620-41124-7	7	steel, galvanized	brass	brass	plastic	2,20	0.13
620-41081-2	7	steel, galvanized	brass	brass	brass	2,20	0.13
620-41124-8	8	steel, galvanized	brass	brass	plastic	2,20	0.13
620-41081-1	8	steel, galvanized	brass	brass	brass	2,20	0.13

Accessories

Welding plates for VSG and VSL

Order number	Model
432-21791-1	VSG2/VSL2
432-21792-1	VSG4/VSL4
432-21793-1	VSG6/VSL6
432-21794-1	VSG8/VSL8

Extensions for VSG and VSL

Order number	Model
420-23872-1	VSG, 1.4305
420-22139-1	VSG
420-24832-1	VSL
420-22140-1	VSL

Metering screw for VSG

Order number	Output		Material
	cm ³	in ³	
303-17505-1	0,55	0.33	steel
303-17506-1	1,10	0.67	steel
303-17507-1	1,65	0.10	steel
303-17508-1	2,2	0.13	steel
303-16283-1	0,55	0.33	stainless steel 1.4305/303
303-16198-1	1,10	0.67	stainless steel 1.4305/303
303-16760-1	1,65	0.10	stainless steel 1.4305/303
303-19759-1	2,2	0.13	stainless steel 1.4305/303
303-16696-1	0,55	0.33	stainless steel 1.4571/316Ti
303-16695-1	1,10	0.67	stainless steel 1.4571/316Ti
303-16694-1	1,65	0.10	stainless steel 1.4571/316Ti
303-16224-1	2,2	0.13	stainless steel 1.4571/316Ti

Magnetic indicator for VSG

Order number	Metering quantity		Protection cap material
	cm ³	in ³	
520-33105-1	0,55	0.033	brass
520-33106-1	1,10	0.043	brass
520-33107-1	1,65	0.065	brass
520-33073-1	2,20	0.087	brass
520-33270-1	0,55	0.033	plastic
520-33271-1	1,10	0.043	plastic
520-33272-1	1,65	0.065	plastic
520-33273-1	2,20	0.087	plastic