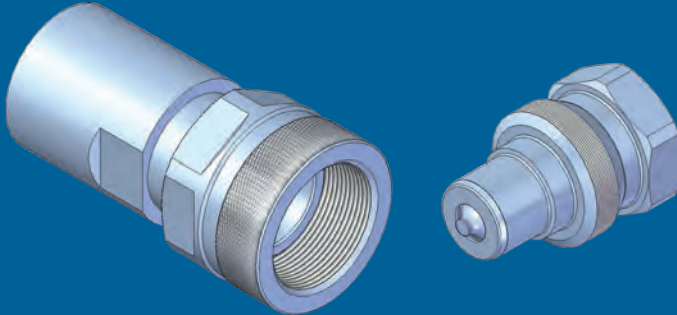


VW1



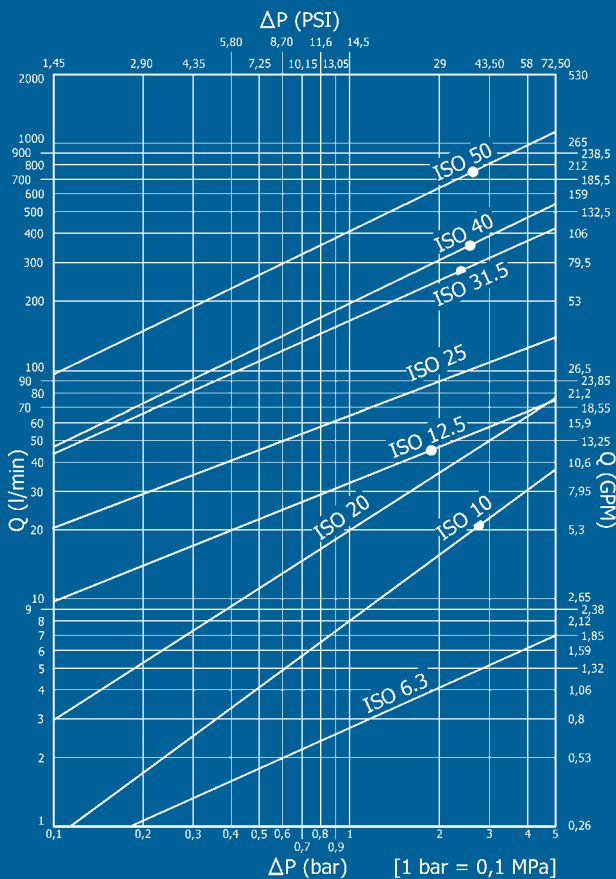
Caratteristiche tecniche

- Intercambiabilità: Faster VVS
- Occlusione: valvola
- Aggancio: a vite
- Materiale: acciaio
- Finitura: Zn-Fe (Cr III)
- Filettature: BSP – NPT
- Guarnizioni standard: NBR
- Temperatura d'esercizio: -25 °C +100 °C
- Guarnizioni opzionali: FKM, EPDM o altro
- Pressioni di esercizio: 210-650 bar
- Connessione in pressione: consentita (lato maschio o lato femmina)

Nominal size				Max working pressure	Rated flow	Max flow rate	Min burst pressure			Fluid spillage
DNP	BG	ISO	mm				Male	Female	Coupled	
10	2	10	6,2	65	23	38	300	300	300	1,9
13	3	12.5	9	60	45	70	250	270	220	2,7
20	4	19	11	50	106	110	240	260	210	9,3
25	5	25	13,3	46	189	189	230	260	200	16
30	6	31.5	22,2	36	288	360	150	150	150	30
39	7	40	24,6	36	379	780	120	150	150	54
50	8	50	30	21	757	1000	130	130	105	120

Technical data

- Interchange: VVS Faster
- Occlusion: poppet
- Locking: screw
- Material: steel
- Finishing: Zn-Fe (Cr III)
- Threads: BSP – NPT
- Standard seals: NBR
- Working temperature: -25 °C +100 °C
- Optional seals: FKM, EPDM or more
- Working pressure: 210-650 bar
- Connection under pressure: allowed (both male or female side)



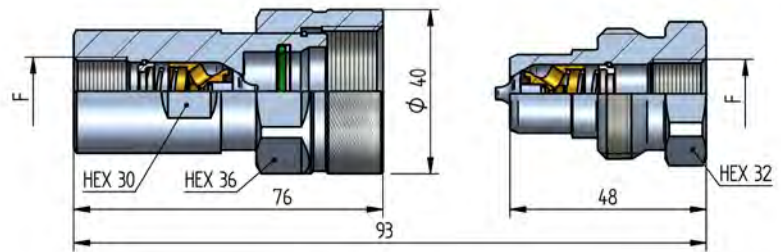
Technische Merkmale

- Austauschbarkeit: VVS Faster
- Verschluss: ventil
- Kupplung: Schraubweise
- Werkstoff: Stahl
- Ausführung: Zn-Fe (Cr III)
- Gewinde: BSP – NPT
- Standard-Dichtung: NBR
- Betriebstemperatur: -25 °C +200 °C
- Dichtungen nach Wahl: FKM, EPDM, usw.
- Betriebsdruck: 210-650 bar
- Kuppeln unter Druck: erlaubt (Steckerseite oder Muffenseite)

Caracteristiques techniques

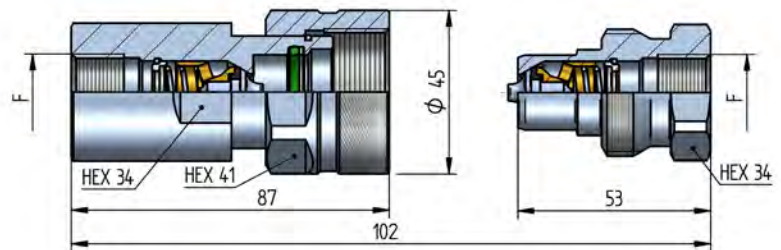
- Intercambiabilità: VVS Faster
- Obturation: clapet
- Accrochage: a vissé
- Matériel: acier
- Traitement: Zn-Fe (Cr III)
- Taraudage: BSP – NPT
- Joints standard: NBR
- Température de service: -25 °C +100 °C
- Joints facultatifs: FKM, EPDM, ect.
- Pression de service: 210-650 bar
- Connexion sous pression: possible (côté male ou femelle)

VW1 DN10 - BG 2 - ISO 10



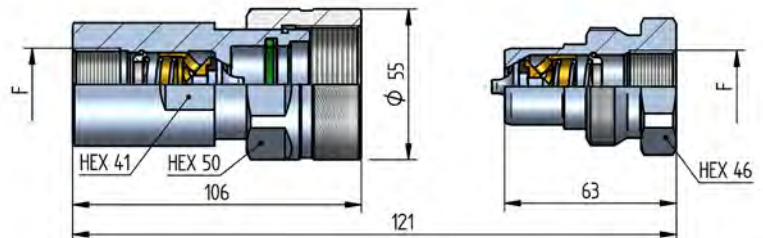
F	STANDARD	FEMMINA - FEMALE - MUFFE - FEMELLE			MASCHIO - MALE - STECKER - MALE		
		COD. F	Weight (g)	Packaging (pcs.)	COD. M	Weight (g)	Packaging (pcs.)
BSP 3/8"	DIN 3852-2-X	VW1.1010.002	344	24	VW1.1010.003	155	42
NPT 3/8"	ANSI B1.20.3	VW1.1010.012	346	24	VW1.1010.013	157	42

VW1 DN13 - BG 3 - ISO 12.5



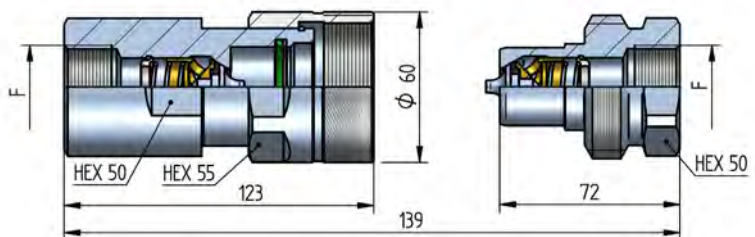
F	STANDARD	FEMMINA - FEMALE - MUFFE - FEMELLE			MASCHIO - MALE - STECKER - MALE		
		COD. F	Weight (g)	Packaging (pcs.)	COD. M	Weight (g)	Packaging (pcs.)
BSP 1/2"	DIN 3852-2-X	VW1.1313.002	576	20	VW1.1313.003	177	35
NPT 1/2"	ANSI B1.20.3	VW1.1313.012	582	20	VW1.1313.013	180	35

VW1 DN20 - BG 4 - ISO 19

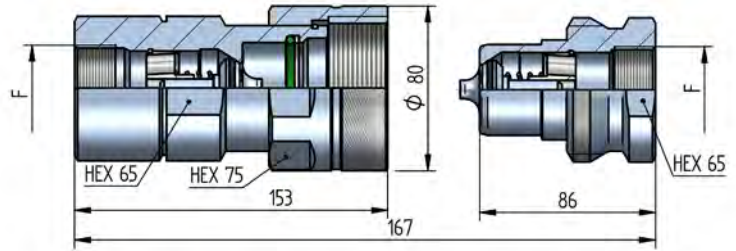


F	STANDARD	FEMMINA - FEMALE - MUFFE - FEMELLE			MASCHIO - MALE - STECKER - MALE		
		COD. F	Weight (g)	Packaging (pcs.)	COD. M	Weight (g)	Packaging (pcs.)
BSP 3/4"	DIN 3852-2-X	VW1.2019.002	988	15	VW1.2019.003	364	20
NPT 3/4"	ANSI B1.20.3	VW1.2019.012	997	15	VW1.2019.013	373	20

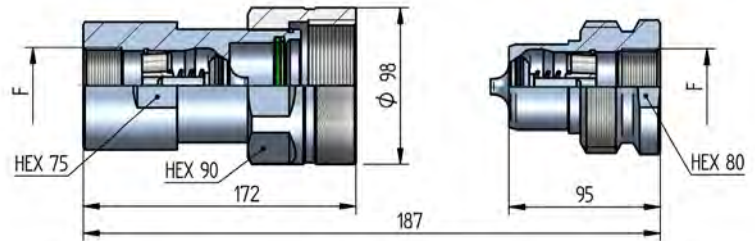
VW1 DN25 - BG 5 - ISO 25



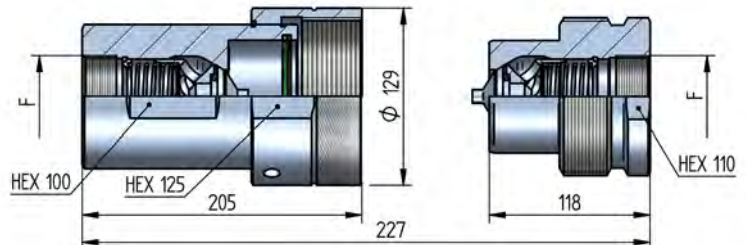
F	STANDARD	FEMMINA - FEMALE - MUFFE - FEMELLE			MASCHIO - MALE - STECKER - MALE		
		COD. F	Weight (g)	Packaging (pcs.)	COD. M	Weight (g)	Packaging (pcs.)
BSP 1"	DIN 3852-2-X	VW1.2525.002	1465	12	VW1.2525.003	524	15
NPT 1"	ANSI B1.20.3	VW1.2525.012	1481	12	VW1.2525.013	540	15

VV1 DN30 - BG 6 - ISO 31.5


F	STANDARD	FEMMINA - FEMALE - MUFFE - FEMELLE			MASCHIO - MALE - STECKER - MALE		
		COD. F	Weight (g)	Packaging (pcs.)	COD. M	Weight (g)	Packaging (pcs.)
BSP 1"¼	DIN 3852-2-X	VV1.3031.002	2933	8	VV1.3031.003	1074	10
NPT 1"¼	ANSI B1.20.3	VV1.3031.012	2950	8	VV1.3031.013	1092	10

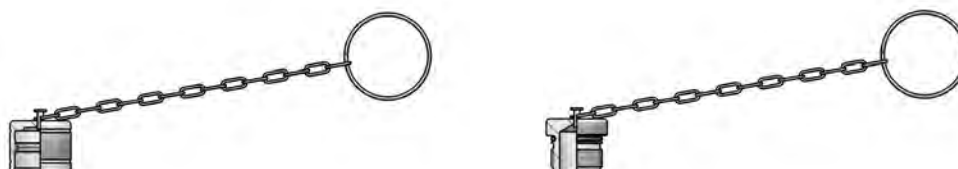
VV1 DN39 - BG 7 - ISO 40


F	STANDARD	FEMMINA - FEMALE - MUFFE - FEMELLE			MASCHIO - MALE - STECKER - MALE		
		COD. F	Weight (g)	Packaging (pcs.)	COD. M	Weight (g)	Packaging (pcs.)
BSP 1"½	DIN 3852-2-X	VV1.3939.002	4550	5	VV1.3939.003	1734	6
NPT 1"½	ANSI B1.20.3	VV1.3939.012	4567	5	VV1.3939.013	1750	6

VV1 DN50 - BG 8 - ISO 50


F	STANDARD	FEMMINA - FEMALE - MUFFE - FEMELLE			MASCHIO - MALE - STECKER - MALE		
		COD. F	Weight (g)	Packaging (pcs.)	COD. M	Weight (g)	Packaging (pcs.)
BSP 2"	DIN 3852-2-X	VV1.5051.002	8880	3	VV1.5051.003	5030	3
NPT 2"	ANSI B1.20.3	VV1.5051.012	8920	3	VV1.5051.013	5070	3

METAL



NOMINAL SIZE			FEMALE DUST PLUG			MALE DUST CAP			MATERIAL
DNP	BG	ISO	COD. F	Weight (g)	Packaging (pcs.)	COD. M	Weight (g)	Packaging (pcs.)	
10	2	10	SWV.10202	57	80	SWV.10203	41	80	Aluminium
13	3	12.5	SWV.13202	72	60	SWV.13203	47	60	Aluminium
20	4	19	SWV.20202	136	40	SWV.20203	117	50	Aluminium
25	5	25	SWV.25202	145	30	SWV.25203	156	30	Aluminium
30	6	31.5	SWV.30202	180	20	SWV.30203	172	20	Aluminium
39	7	40	SWV.39202	230	10	SWV.39203	210	10	Aluminium
50	8	50	SWV.50202	300	5	SWV.50203	270	5	Aluminium

GUARNIZIONI DI RICAMBIO / SPARE PARTS / ERSATZDICHTUNGEN / JOINTS

NOMINAL SIZE			FEMALE GASKET	
DNP	BG	ISO	VITON	PTFE
10	2	10	VV.010.120	VV.010.130
13	3	12.5	VV.013.120	VV.013.130
20	4	19	VV.019.120	VV.019.130
25	5	25	VV.025.120	VV.025.130
30	6	31.5	VV.030.120	VV.030.130
39	7	40	VV.039.120	VV.039.130
50	8	50	VV.050.120	VV.050.130