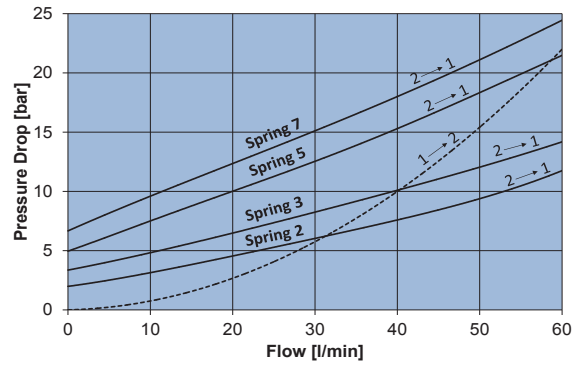
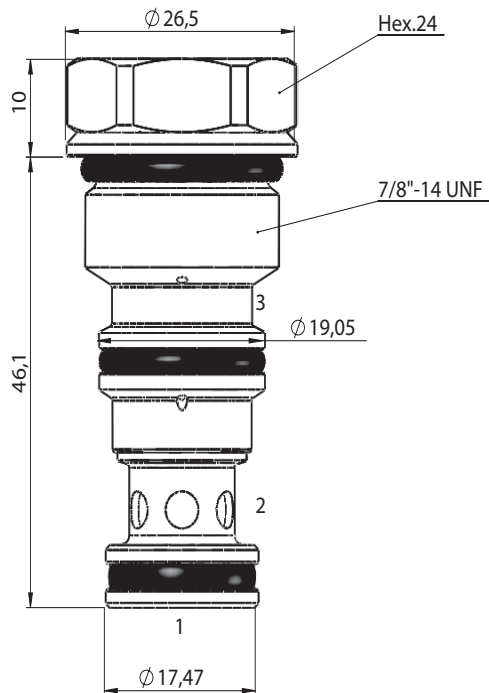
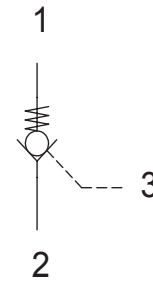


PILOT OPERATED CHECK VALVE

- Max Flow **60 l/min**
- Max working pressure **350 bar**
- Seals **NBR and PTFE**
- Leakage **0,1 cc/min @ 350 bar**
- Cartridge tightening torque **50 Nm**
- Weight **0,11 Kg**
- Cavity **C331000** page **221**
- Body single cavity **172312** page **193**
- Body double cavity **176312** page **194**



Ordering code

0 7 2 3 2 **0 1**

SEALS		SPRINGS				PILOT RATIO	
1	Without seals	2	3	5	7	1	3:1
2	With seals	Cracking pressure [bar]	2	3	5		