

Airwork's cylinders series CQ are produced respecting norm ISO 15552 and have bores comprised between 160 and 250 mm. Double effect, cushioned and magnetic they are indicates where precision in requested. Special versions according to drawing and versions with VITON seals are available.

Les vérins de la série CQ sont conformes aux normes ISO 15552 et ont alésages du 160 jusqu'à 250 mm.

Ils sont disponibles différentes versions: double effet, magnétique ou non, avec o sans amorti. La production du vérins speciaux est possible selon le dessin du client, et est aussi possible l'usage des joints en VITON pour hautes températures.

I cilindri Airwork sono realizzati rispettando la normativa ISO 15552 ed hanno alesaggi compresi tra 160 e 250 mm.

Doppio effetto, ammortizzati e magnetici sono indicati dove è richiesta precisione ed affidabilità.

Possibili realizzazioni speciali a disegno e guarnizioni in Viton per alte temperature.

ORDERING CODE / CODIFICATION / CHIAVE DI CODIFICA

CQ 00,1,000,0000,

Stroke / Course / Corsa

Ø Cylinder / Ø Vérin / Ø Cilindro

SEALS / JOINTS / GUARNIZIONI

1 = polyurethane / polyuréthane / poliuretano

3 = viton / viton / viton

4 = seal rod for hard use / joint tige pour utilisation lourde / guarnizione stelo per uso pesante

6 = viton only rod / viton côté tige / viton solo stelo

VERSIONE - VERSION - VERSION

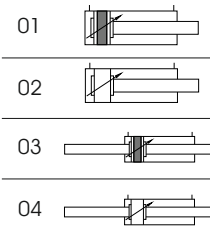
01 = double acting cushioned magnetic / double effet amorti magnétique / doppio effetto ammortizzato magnetico

02 = double acting cushioned non magnetic / double effet amorti non magnétique / doppio effetto ammortizzato non magnetico

03 = through rod cushioned magnetic / tige traversante amorti magnétique / stelo passante ammortizzato magnetico

04 = through rod cushioned non magnetic / tige traversante amorti non magnétique / stelo passante ammortizzato non magnetico

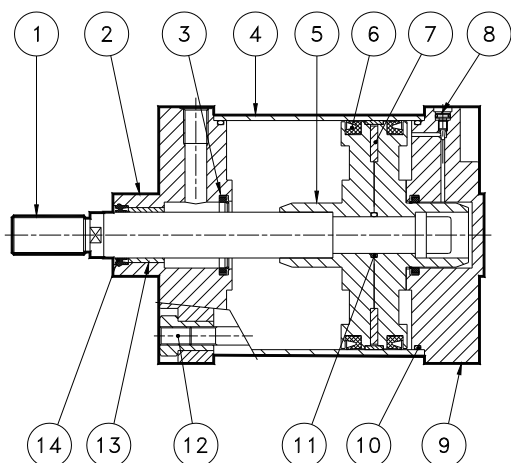
VERSIONE - VERSION



TECHNICAL DATA / DONNÉES TECHNIQUES / DATI TECNICI

Sizes / Alésage / Alesaggi	Ø160-200-250
Standard strokes / Course standard / Corse standard	mm 25-50-80-100-125-160-200-250-320-350-400-500-600-700-800-900-1000
Fluid - Fluide - Fluido	Lubricated or non lubricated air / Air lubrifié ou non / Aria con o senza lubrificazione
Operating temperature range / Température d'utilisation / Temperatura di esercizio	Poliuretane : -20C°+80C° / Viton: -10C°+150C°
Max operating pressure / Pression max d'utilisation / Pressione massima di esercizio	10 bar
Force / Force / Forze sviluppate -	Technical informations page / Page informations techniques / Pagina dati tecnici
Air consumption / Consommation d'air / Consumo aria	Technical informations page / Page informations techniques / Pagina dati tecnici

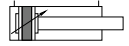
COMPONENTS / COMPOSANTS / COMPONENTI



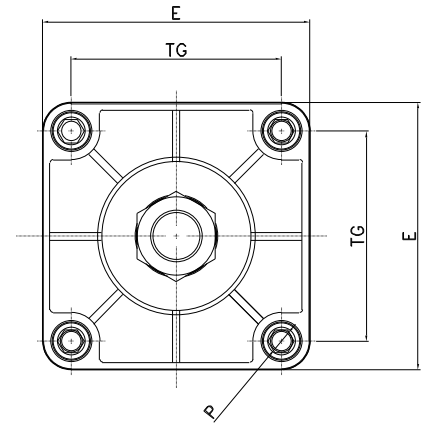
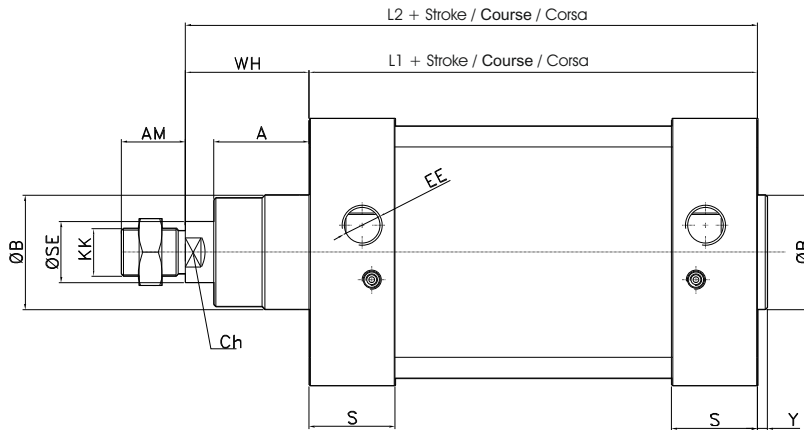
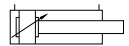
pos.	description / description / descrizione	material / matériel / materiale
1	rod / tige / stelo	steel C40 chromed / acier C40 chromé / acciaio C40 cromato
2	front cap / nez avant / testata ant.	alluminio / aluminium / aluminium
3	cushion seal / joint amortis. / guarn. amm.	polyurethane / polyuréthane / poliuretano
4	tube / tube / tubo	alluminio / aluminium / aluminium
5	piston / piston / pistone /	alluminio / aluminium / aluminium
6	seal piston / joint piston / guarnizione pist.	polyurethane / polyuréthane / poliuretano
7	magnet / aimant / magnete	plastoferrite
8	cushion screw / vis amorti. / vite amm.	Ot 58
9	rear cap / fond arrière. / testata post.	alluminio / aluminium / aluminium
10	o-ring / joint torique	NBR
11	o-ring / joint torique	NBR
12	fixing screw / vis serrant la tête / viti fiss.	steel / acier / acciaio
13	guide bush / bague guidage / bussola guida	bronzo / bronze
14	rod seal / joint de tige / guarnizione stelo	polyurethane / polyuréthane / poliuretano

Double acting / Double effet / Doppio effetto

CODE: CQ011.Ø.mm



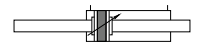
CODE: CQ021.Ø.mm



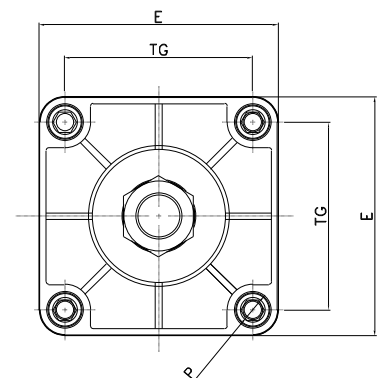
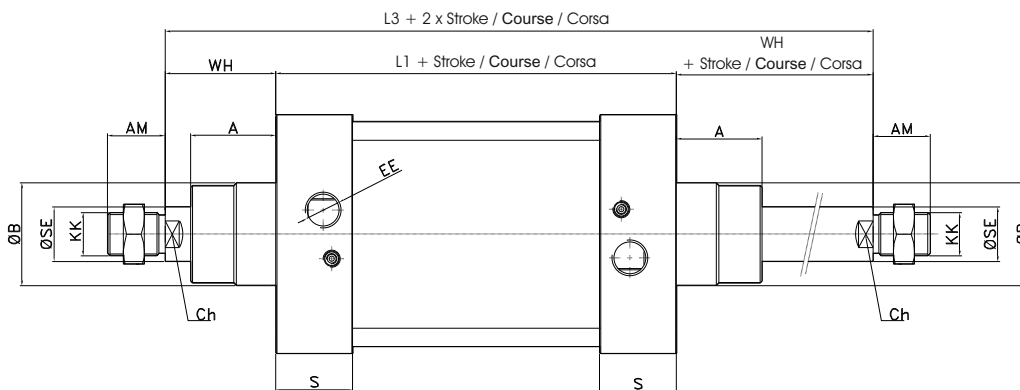
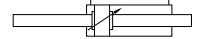
Ø	A	AM	ØB	E	EE	Y	KK	L1	L2	P	S	ØSE	TG	WH	Ch
160	55	72	65	180	G3/4"	6	M36x2	180 ± 1	260	M16	50	40	140	80	36
200	65	72	75	220	G3/4"	8	M36x2	180 ± 1	275	M16	50	40	175	95	36
250	75	84	90	270	G1"	8	M42x2	200 ± 1	305	M20	60	50	220	105	46

Through rod / Tige traversante / Stelo passante

CODE: CQ031.Ø.mm



CODE: CQ041.Ø.mm



Ø	A	AM ($\frac{2}{2}$)	B e11	E	EE	KK	L1	L3	P	S	SE Ø	TG	WH	Ch
160	55	72	65	180	G3/4"	M36x2	180 ± 1	340 ± 1	M16	50	40	140	80	36
200	67	72	75	220	G3/4"	M36x2	180 ± 1	370 ± 1	M16	50	40	175	95	36
250	75	84	90	270	G1"	M42x2	200 ± 1	410 ± 1	M20	60	50	220	105	46