

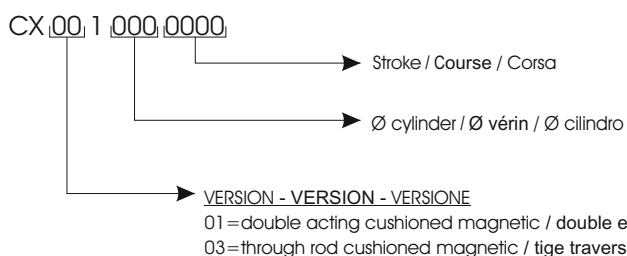


CX series cylinders have been made respecting norm DIN/ISO 15552. These cylinders are particularly suitable in aggressive atmospheres, in the naval, pharmaceutical and food industry. Bores are comprised from 32 to 125mm.

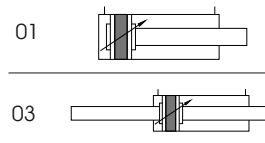
Le vérin série CX répond exactement à la norme ISO 15552
Il est prévu pour être utilisé dans les ambiances spécial: pharmaceutique navale, alimentaire. Taille disponible allant du 32 au 125.

I Cilindri della serie CX sono stati realizzati rispettando la normativa DIN/ISO 15552. Tali cilindri sono particolarmente adatti in ambienti particolari come: navale, farmaceutica, alimentare.
Gli alesaggi sono compresi tra 32 e 125 mm.

ORDERING CODE / CODIFICATION / CHIAVE DI CODIFICA



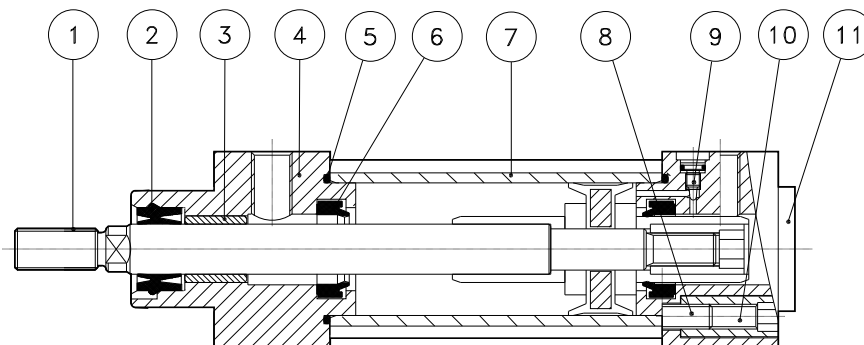
VERSION / VERSION / VERSION



TECHNICAL DATA / DONNÉES TECHNIQUES / DATI TECNICI

Sizes / Alésage / Alesaggi	Ø32-40-50-63-80-100-125
Standard strokes / Course standard / Corse standard	mm 25-50-80-100-125-160-200-250-320-350-400-500-600-700-800-900-1000
Fluid / Fluide / Fluido	Lubricated or non lubricated air / Air avec ou sans lubrification / Aria con o senza lubrificazione
Operating temperature range / Température d'utilisation / Temperatura di esercizio	Poliurethane / Polyuréthane / Poliuretano: -20C°+80C° / Viton: -10C°+150C°
Max operating pressure / Pression max d'utilisation / Pressione massima di esercizio	10 bar
Force / Force / Forze sviluppate	Technical informations page / Page informations techniques / Pagina dati tecnici
Air consumption / Consommation d'air / Consumo aria	Technical informations page / Page informations techniques / Pagina dati tecnici

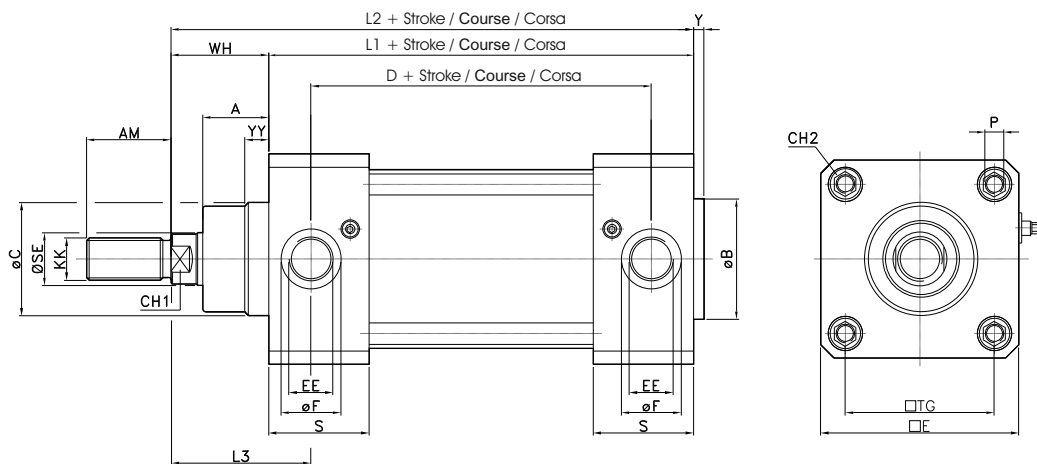
COMPONENTS / COMPOSANTS / COMPONENTI



pos.	description / description / descrizione	material / matériel / materiale
1	rod / tige / stelo	stainless steel AISI 316 / acier inox 316 / acciaio inox 316
2	rod seal / joints tige / guarnizione stelo	polyurethane / polyuréthane / poliuretano
3	guide bush / bague guidage / bussola guida	bronze / bronze / bronzo
4	front cap / fond antérieur / testata anteriore	stainless steel AISI 304 / acier AISI 304 / acciaio AISI 304
5	o-ring / joint torique	NBR
6	cushion seal / joint d'amortissement / guarnizione ammortizzo	polyurethane / polyuréthane / poliuretano
7	tube / tube / tube	stainless steel AISI 304 / acier AISI 304 / acciaio inox 304
8	tie rod / tirant / tirante	stainless steel AISI 316 / acier inox 316 / acciaio inox 316
9	regulator cushion screw / vis reg.amortis. / vite reg. ammortizzo	stainless steel AISI 316 / acier inox 316 / acciaio inox 316
10	fixing cap screw / vis serrage nez / vite serraggio testata	stainless steel AISI 316 / acier inox 316 / acciaio inox 316
11	rear cap / fond / testata posteriore	stainless steel AISI 304 / acier AISI 304 / acciaio inox 304

Double acting magnetic cushioned
Double effet magnétique amorti
Dopplo effetto magnetico ammortizzato

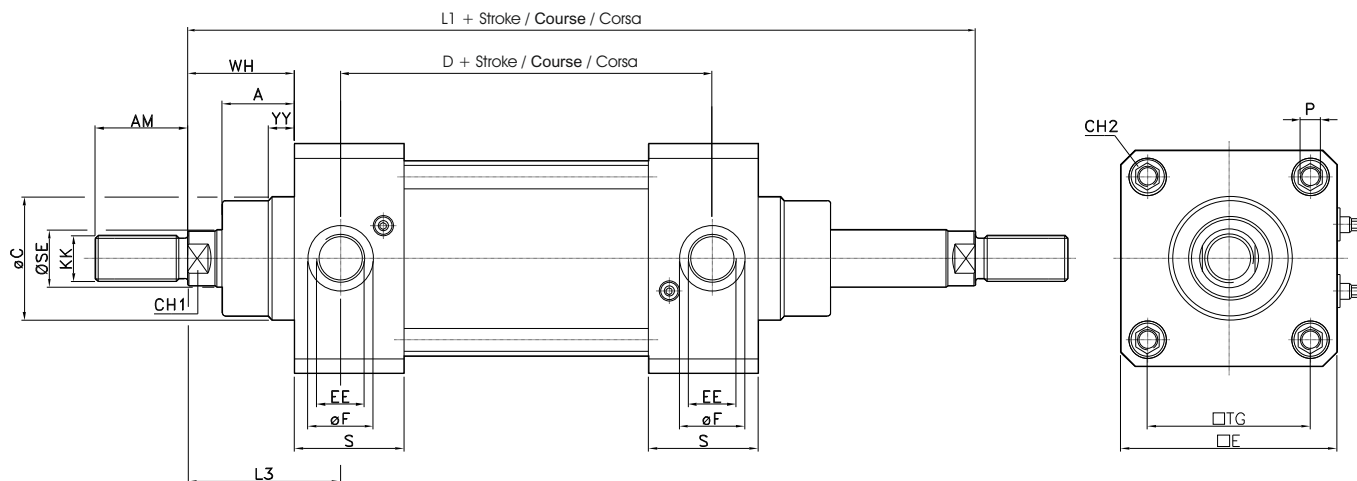
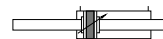
CODE: CX011.Ø.mm



Ø	A	AM	B	C	D	E	EE	F	Y	YY	KK	L1	L2	L3	P	S	SE	TG	WH	Ch1	Ch2
32	18	22	30	30	67	50	G1/8"	16	4	9	M10x1.25	95	121	39.5	M6	30.8	12	32.5	26	10	6
40	22	24	35	35	77	55	G1/4"	19	4	9	M12x1.25	105	135	44	M6	33	16	38	30	13	6
50	25.5	32	40	40	78	65	G1/4"	19	4	9	M16x1.5	106	143	51	M8	33.7	20	46.5	37	16	8
63	25	32	45	45	89	75	G3/8"	22.7	4	9	M16x1.5	121	158	53	M8	38	20	56.5	37	16	8
80	35	40	45	45	96	95	G3/8"	22.7	4	9	M20x1.5	128	174	62	M10	40	25	72	46	21	10
100	38	40	55	55	102	110	G1/2"	28	4	9	M20x1.5	138	189	69	M10	43.5	25	89	51	21	10
125	46	54	60	60	124	139	G1/2"	28	6	10	M27x2	160	225	83	M12	53	32	110	65	27	12

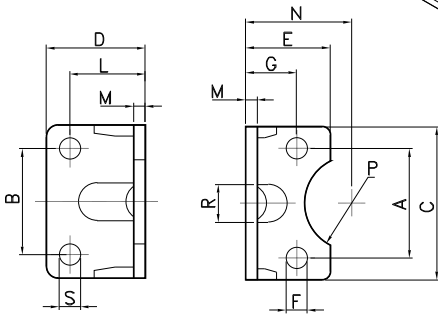
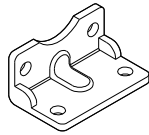
Double acting magnetic through rod
Double effet magnétique tige traversante
Dopplo effetto magnetico stelo passante

CODE: CX031.Ø.mm



Ø	A	AM	C	D	E	EE	F	YY	KK	L1	L3	P	S	SE	TG	WH	Ch1	Ch2
32	18	22	30	67	50	G1/8"	16	9	M10x1.25	147	39.5	M6	30.8	12	32.5	26	10	6
40	22	24	35	77	55	G1/4"	19	9	M12x1.25	165	44	M6	33	16	38	30	13	6
50	25.5	32	40	78	65	G1/4"	19	9	M16x1.5	180	51	M8	33.7	20	46.5	37	16	8
63	25	32	45	89	75	G3/8"	22.7	9	M16x1.5	195	53	M8	38	20	56.5	37	16	8
80	35	40	45	96	95	G3/8"	22.7	9	M20x1.5	220	62	M10	40	25	72	46	21	10
100	38	40	55	102	110	G1/2"	28	9	M20x1.5	240	69	M10	43.5	25	89	51	21	10
125	46	54	60	124	139	G1/2"	28	11	M27x2	290	83	M12	53.2	32	110	65	28	12

Material: Stainless steel AISI 316
Matière: Inox 316L
Materiale: Inox AISI 316

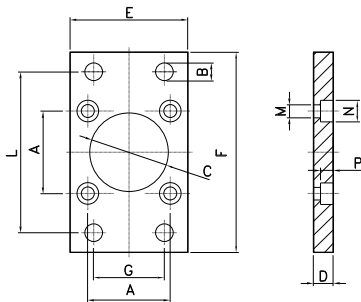
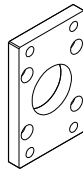


PEDESTAL / EQUERRE / PIEDINO

CODE	Ø
AR4169032	32
AR4169040	40
AR4169050	50
AR4169063	63
AR4169080	80
AR4169100	100
AR4169125	125

Ø	A	B	C	D	E	F	G	L	M	N	P	R	S
32	32,5	32	45	35	30	7	15,75	24	4	32	15	11	7
40	38	36	52	36	30	7	17	28	4	36	17,5	15	9
50	46,5	45	65	47	36	9	21,75	32	5	45	20	16	9
63	56,5	50	75	45	35	9	21,75	32	5	50	22,5	18	9
80	72	63	95	55	47	11	27	41	6	63	22,5	17	12
100	89	75	115	57	53	11	26,5	41	6	71	27,5	24	14
125	110	90	140	70	70	14	35	45	8	90	30	-	16

Material: Stainless steel AISI 316
Matière: Inox 316L
Materiale: Inox AISI 316

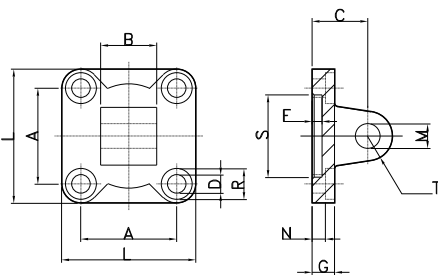
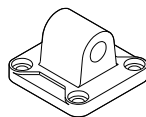


FLANGE / BRIDE / FLANGIA

CODE	Ø
AR4168032	32
AR4168040	40
AR4168050	50
AR4168063	63
AR4168080	80
AR4168100	100
AR4168125	125

Ø	A	B	C	D	E	F	G	L	M	N	P
32	32,5	7	30	10	45	80	32	64	6,5	10,5	6,5
40	38	9	35	10	52	90	36	72	6,5	10,5	6,5
50	46,5	9	40	12	65	110	45	90	8,5	13,5	8,5
63	56,5	9	45	12	75	120	50	100	8,5	13,5	8,5
80	72	12	45	16	95	150	63	126	10,5	16,5	10,5
100	89	14	55	16	115	170	75	150	10,5	16,5	10,5
125	110	16	60	20	140	205	90	180	13,5	20	12,5

Material: Stainless steel AISI 316
Matière: Inox 316L
Materiale: Inox AISI 316

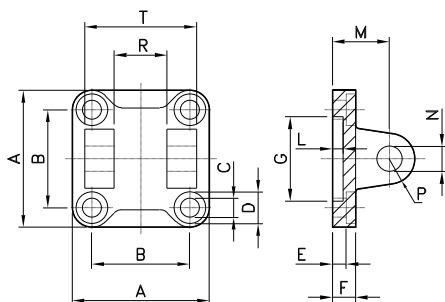
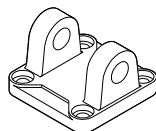


FEMALE HINGE / CHAPE ARRIERE / CERNIERA FEMMINA

CODE	Ø
AR4165032	32
AR4165040	40
AR4165050	50
AR4165063	63
AR4165080	80
AR4165100	100
AR4165125	125

Ø	A	B	C	D	F	G	L	M	N	R	S	T
32	32,5	26	22	6,6	5	9	45	10	5,5	11	30	10
40	38	28	25	6,6	5	9	52	12	5,5	11	35	12
50	46,5	32	27	9	5	11	65	12	6,5	15	40	12
63	56,5	40	32	9	5	11	75	16	6,5	15	45	16
80	72	50	36	11	5	14	95	16	10	18	45	16
100	89	60	41	11	5	14	115	20	10	18	55	20
125	110	70	50	14	7	20	140	25	10	20	60	25

Material: Stainless steel AISI 316
Matière: Inox 316L
Materiale: Inox AISI 316



FEMALE HINGE / CHAPE ARRIERE / CERNIERA FEMMINA

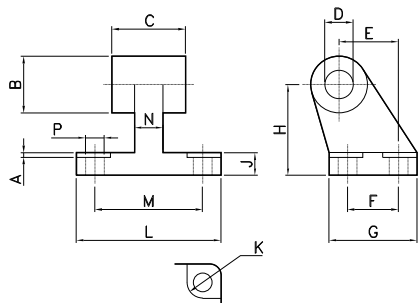
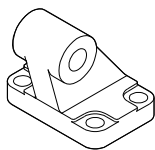
CODE	Ø
AR4164032	32
AR4164040	40
AR4164050	50
AR4164063	63
AR4164080	80
AR4164100	100
AR4164125	125

Ø	A	B	C	D	E	F	G	L	M	N	P	R	T
32	45	32,5	6,6	11	5,5	9	30	5	22	10	10	26	45
40	52	38	6,6	11	5,5	9	35	5	25	12	12	28	52
50	65	46,5	9	15	6,5	11	40	5	27	12	12	32	60
63	75	56,5	9	15	6,5	11	45	5	32	16	16	40	70
80	95	72	11	18	10	14	45	5	36	16	16	50	90
100	115	89	11	18	10	14	55	5	41	20	20	60	110
125	140	110	14	20	10	20	60	7	50	25	25	70	130

Material: Stainless steel AISI 316

Matière: Inox 316L

Materiale: Inox AISI 316



SQUARE JOINT

ARTICULATION ARRIERE D'EQUERRE

ARTICOLAZIONE A SQUADRA

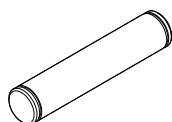
CODE	Ø
AR4166032	32
AR4166040	40
AR4166050	50
AR4166063	63
AR4166080	80
AR4166100	100
AR4166125	125

Ø	A	B	C	D	E	F	G	H	J	K	L	M	N	P
32	1.6	20	26	10	21	18	31	32	8	11	51	38	10	6.6
40	1.6	22	28	12	24	22	35	36	10	11	54	41	15	6.6
50	1.6	26	32	12	33	30	45	45	12	15	65	50	16	9
63	1.6	30	40	16	37	35	50	50	14	15	67	52	16	9
80	2.5	30	50	16	47	40	60	63	14	18	86	66	20	11
100	2.5	38	60	20	55	50	70	71	17	18	96	76	20	11
125	3.2	45	70	25	70	60	90	90	20	20	124	94	30	14

Material: Stainless steel AISI 316

Matière: Inox 316L

Materiale: Inox AISI 316



PIVOT FOR HINGE

AXE ARTICULATION ARRIERE FEMELLE

PERNO PER CERNIERA

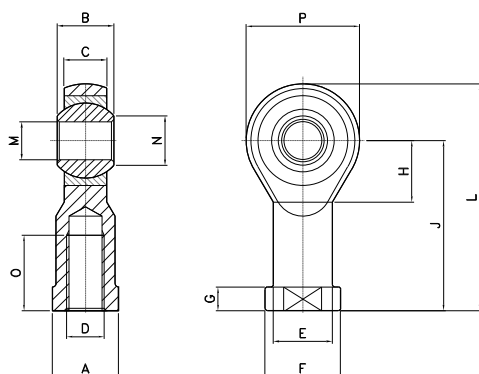
CODE	Ø
AR4167032	32
AR4167040	40
AR4167050	50
AR4167063	63
AR4167080	80
AR4167100	100
AR4167125	125

Ø	A	B	C	D	E
32	10	53	9.6	1.1	46
40	12	60	11.5	1.1	53
50	12	68	11.5	1.1	61
63	16	78	15.2	1.1	71
80	16	98	15.2	1.1	91
100	20	118	19	1.3	111
125	25	139	23.9	1.3	132

Material: Stainless steel AISI 316

Matière: Inox 316L

Materiale: Inox AISI 316



ROD ENDS

CHAPE DE TIGE ROTULEE

TESTA A SNODO

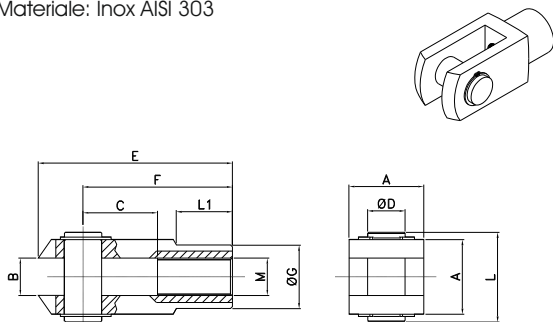
CODE	Ø
AR4187032	32
AR4187040	40
AR4187050	50-63
AR4187080	80-100
AR4187125	125

Ø	A	B	C	D	E	F	G	H	J	L	M	N	O	P
32	17	14	10.5	M10x1.25	15	19	6.5	15	43	57	10	12.9	20	28
40	19	16	12	M12x1.25	17.5	22	6.5	17	50	66	12	15.4	22	32
50-63	22	21	15	M16x1.5	22	27	8	23	64	85	16	19.3	28	42
80-100	30	25	18	M20x1.5	27.5	34	10	27	77	102	20	24.3	33	50
125	41	37	25	M27x2	40	50	15	36	110	145	30	34.8	51	70

Material: Stainless steel AISI 303

Matière: Inox 304L

Materiale: Inox AISI 303



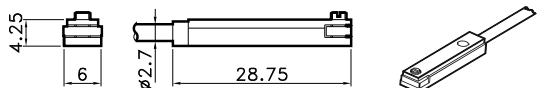
YOKE WITH PIVOT
CHAPE DE TIGE AVEC PIN
FORCELLA CON PERNO

CODE	Ø
AR4218	32
AR4219	40
AR4220	50-63
AR4221	80-100
AR4222	125

Complete of pivot and seeger / complète de pivot et Seeger /
Completo di perno e seeger

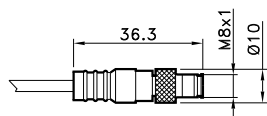
Ø	A	B	C	D	E	F	G	M	L	L1
32	20	10	20	10	52	40	18	M10x1.25	25	15
40	24	12	24	12	62	48	20	M12x1.25	30	18
50/63	32	16	32	16	83	64	26	M16x1.5	39	24
80/100	40	20	40	20	105	80	34	M20x1.5	48	30
125	55	30	54	30	148	110	48	M27x2	65	38

CYLINDERS ISO 15552 - STAINLESS STEEL
VERINS ISO 15552 - INOX / CILINDRI ISO 15552 - INOX
Attuatori / Actionneurs / Attuatori



T SWITCH / CAPTEUR A T / SENSORE A T

CODE	
AR4023010	REED (MT.2,5) / REED (MT.2,5) / REED (MT.2,5)
AR4023020	HALL (MT.2,5) / HALL (MT.2,5) / HALL (MT.2,5)
AR4023110	REED + M8 (CM 30) / REED + M8 / REED + M8 (CM 30)
AR4023120	HALL + M8 (CM 30) / HALL + M8 / HALL + M8 (CM 30)



4= black / noire / nero
1= brown / brun / marrone
3= blue / bleu / azzurro

For technical data see page 1.58

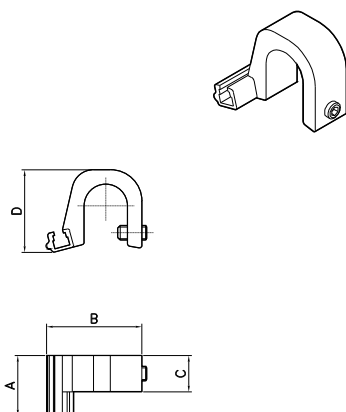
Pour les données techniques, voir page 1.58

Per i dati tecnici vedere pag. 1.58

Material: Aluminium

Matière: Aluminium

Materiale: Alluminio



ADAPTOR FOR T SWITCH
ADAPTER CAPTEUR A T
ADATTATORE SENSORE A T

CODE	Ø
AR420032	32-40
AR420050	50-63
AR420080	80-100
AR4200125	125

Ø	A	B	C	D
32-40	25	30	15	20
50-63	25	35	15	26
80-100	25	38	15	30
125	25	40	15	35