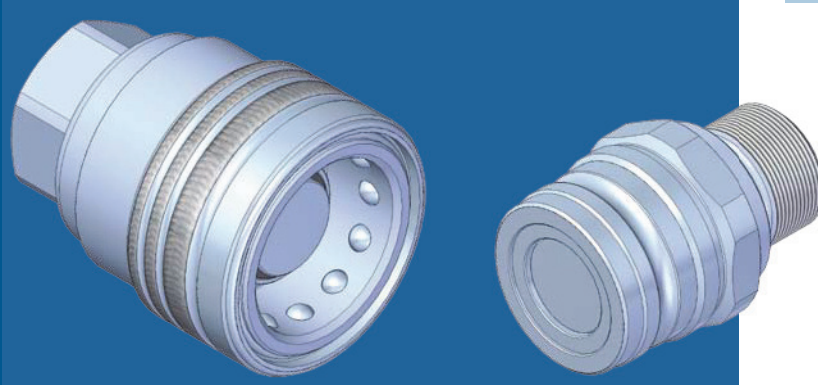
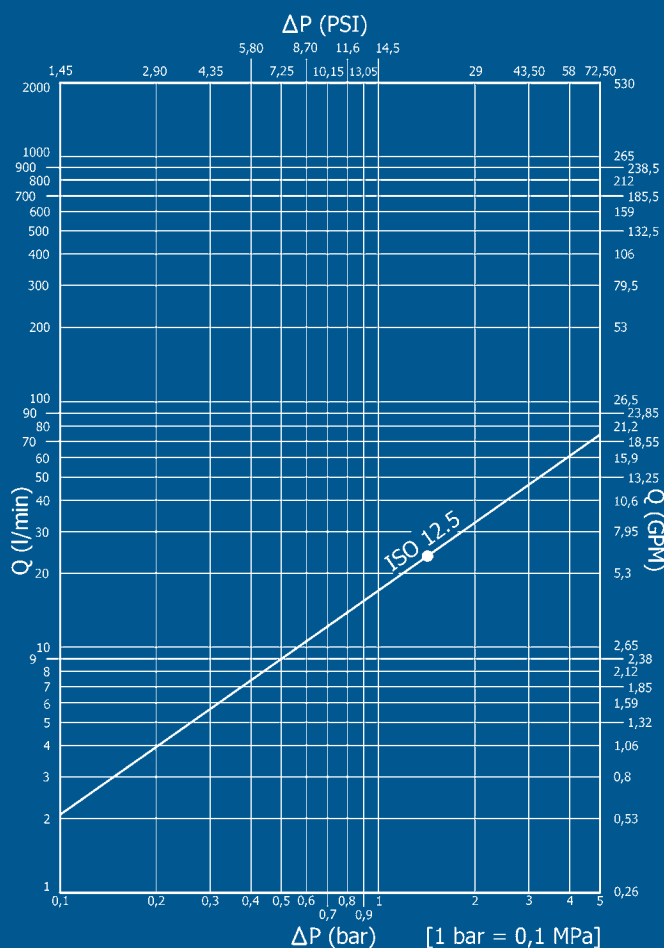


PFT



Nominal size				Max working pressure	Rated flow	Max flow rate	Min burst pressure			Fluid spillage
DNP	BG	ISO	mm				Male	Female	Coupled	
13	3	12.5	8	15 Mpa	24 l/min	48 l/min	90 MPa	62 MPa	93 MPa	0,05 cc



Caratteristiche tecniche

- Norma: ISO 5676
- Occlusione: faccia piana
- Aggancio: sfere radiali
- Materiale: acciaio
- Finitura: Zn-Fe (Cr III)
- Filettature: BSP – SAE - METRICHE
- Guarnizioni standard: NBR
- Temperatura d'esercizio: -25 °C +100 °C
- Guarnizioni opzionali: FKM, EPDM o altro
- Pressioni di esercizio: 150 bar
- Connessione in pressione: non consentita

Technical data

- Standard: ISO 5676
- Occlusion: flat face
- Locking: radial balls
- Material: steel
- Finishing: Zn-Fe (Cr III)
- Threads: BSP – SAE - METRICS
- Standard seals: NBR
- Working temperature: -25 °C +100 °C
- Optional seals: FKM, EPDM or more
- Working pressure: 150 bar
- Connection under pressure: not allowed

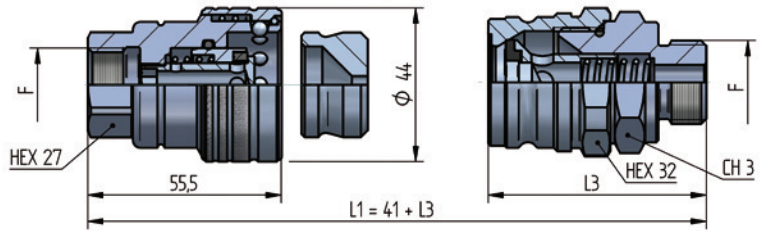
Technische Merkmale

- Norm: ISO 5676
- Verschluss: flachdichtend
- Kupplung: Radialkugeln
- Werkstoff: Stahl
- Ausführung: Zn-Fe (Cr III)
- Gewinde: BSP – SAE - METRISCHE
- Standard-Dichtungen: NBR
- Betriebstemperatur: -25 °C +100 °C
- Dichtungen nach Wahl: FKM, EPDM, usw.
- Betriebsdruck: 150 bar
- Kuppeln unter Druck: nicht möglich

Caracteristiques techniques

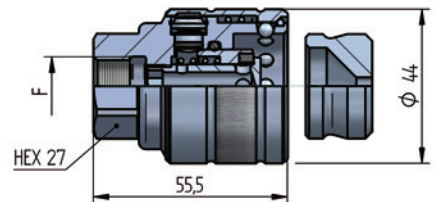
- Norme: ISO 5676
- Obturation: clapet plat
- Accrochage: billes radiales
- Matériel: acier
- Traitement: Zn-Fe (Cr III)
- Taraudage: BSP – SAE - METRIQUES
- Joints standard: NBR
- Température de service: -25 °C +100 °C
- Joints facultatifs: FKM, EPDM, ect.
- Pression de service: 150 bar
- Connexion sous pression: pas possible

PFT DN13 - BG 3 - ISO 12.5



THREADS	CH3	L3	L4	L5	ØT	F1	F2	F	STANDARD	FEMMINA - FEMALE - MUFFE - FEMELLE			MASCHIO - MALE - STECKER - MALE		
										COD. F	Weight (g)	Pack. (pcs.)	COD. M	Weight (g)	Pack. (pcs.)
IG 1								BSP 3/8"	DIN 3852-2-X	PFT1.1310.002	427	36			
	28	57						BSP 1/2"	DIN 3852-2-X	PFT1.1313.002	389	36	PFT3.1313.113	211	50
								M18x1,5	ISO 6149-1	PFT1.1318.102	402	36			
AG 5			48	15,5				BSP 1/2"	DIN 3852-2-A				PFT3.1313.213	153	50
AGS 3			49	21		12L		M18x1,5	ISO 8434-1-L				PFT3.1318.503	142	50
			51	23		13,4		M20x1,5	-				PFT3.1320.503	154	50
			41	23		15L		M22x1,5	ISO 8434-1-L				PFT3.1322.503	172	50
			32	82	28	15L		M22x1,5	ISO 8434-1-L				PFT3.1322.623	357	50
			63	35		14S		M22x1,5	ISO 8434-1-S				PFT3.1322.603	198	50
AGS 6			52,5	12,5	24,5	10	M16x1,5	M20x1,5	-	-			PFT3.1336.503	152	50
			52	12,5	24	12	M18x1,5	M20x1,5	-	-			PFT3.1338.503	152	50
AG 1	28	50	11					3/4"-16 UNF	SAE J 1926-2				PFT3.1319.223	131	50
AG 3	32	55	12		12L			M18x1,5	ISO 8434-1-L				PFT3.1318.303	287	50
	32	65	12		15L			M22x1,5	ISO 8434-1-L				PFT3.1322.303	293	50
AGS 1			65	37				M22x1,5	DIN 3863-U				PFT3.1322.613	205	50
AGS 2	28	89,5	16,7					3/4"-16 UNF	SAE J 514				PFT3.1319.503	296	50
	32	94	40					7/8"-14 UNF	SAE J 514				PFT3.1378.603	365	50

PFTB DN13 - BG 3 - ISO 12.5



THREADS	F	STANDARD	FEMMINA - FEMALE - MUFFE - FEMELLE		
			COD. F	Weight (g)	Pack. (pcs.)
IG 1	BSP 3/8"	DIN 3852-2-X	PFTB.1310.002	373	36
	BSP 1/2"	DIN 3852-2-X	PFTB.1313.002	365	36

THREADS

