

BREATHERS

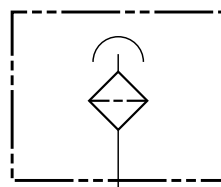
BF 3 Series



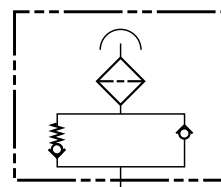
Specifications

- Maximum flow rate - 31 scfm / 230 gpm at 0.04 bar
- Epoxy coated steel cap
- Zinc-plated internals
- 3 or 10 micron
- Threaded connection
- Pressurized breather with relief valve (*optional - BF3 only*)
- Phenolic resin impregnated filter element

Hydraulic Symbols

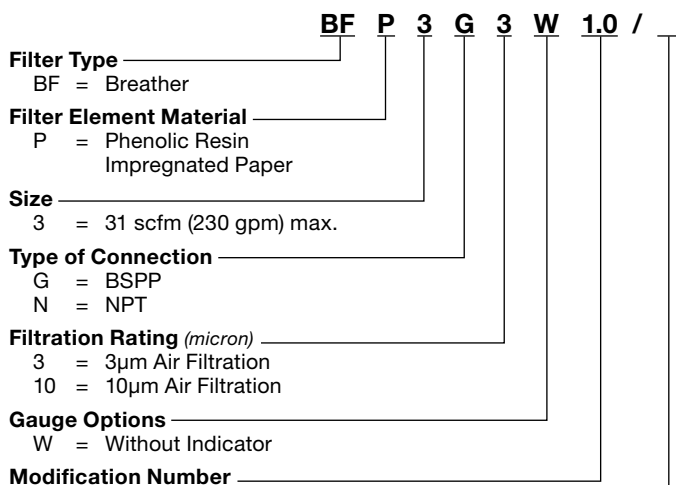


Standard

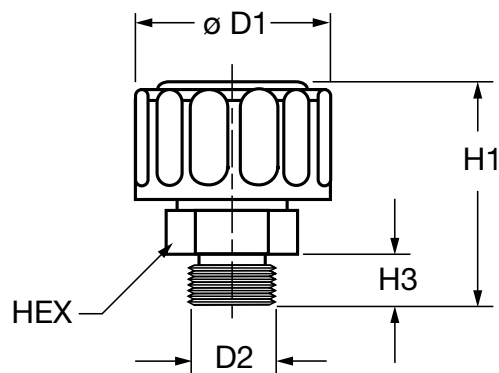


with Relief Valve

Model Code



Dimensions



Size	ØD1	D2	H1	H3	HEX
BF 3..1.0	2.99"	G 3/4"	3.11"	0.63"	1-7/16"
BF 3..2.0	2.99"	G 3/8"	2.83"	0.47"	7/8"
BF 3..3.0	2.99"	G 1/2"	2.99"	0.55"	1-1/16"
BF 3..4.0	2.99" (76mm)	G 3/4"	3.11" (79mm)	0.63" (16mm)	1-7/16" (36mm)
BF 3..5.0		G 3/8"			
BF 3..6.0		G 1/2"			

Dimensions are for general information only, all critical dimensions should be verified by requesting a certified print.
Dimensions are in inches/(mm)

	G(BSPP)	Relief Pressure	N (NPT)	Relief Pressure
1.0 =	G 3/4	-	3/4 NPT	-
2.0 =	G 3/8	-	-	-
3.0 =	G 1/2	-	-	-
4.0 =	G 3/4	0.4 bar	3/4 NPT	0.4 bar
5.0 =	G 3/4	0.7 bar	3/4 NPT	0.7 bar
6.0 =	G 3/4	0.2 bar	3/4 NPT	0.2 bar

Supplementary Details

- (omit) = standard
RV = Relief Valve (*for use on pressurized tanks*)

Note: Low temperature options available. All breathers are available with special options and materials. Please contact the factory.