

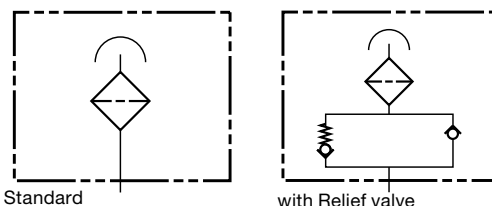
BF 30 Series



Specifications

- Maximum flow rate - 31 scfm / 230 gpm at 0.04 bar
- Durable synthetic material (PA6)
- 3 or 10 micron
- Buna N O-Ring
- Threaded breather connection
- Optional dipstick (*contact factory*)
- Optional customer logo (*contact factory*)
- Optional pressurized breather with relief valve
- Optional anti-splash device
- -22° to 212°F (-30° to 100°C)
- Phenolic resin impregnated filter element

Hydraulic Symbols

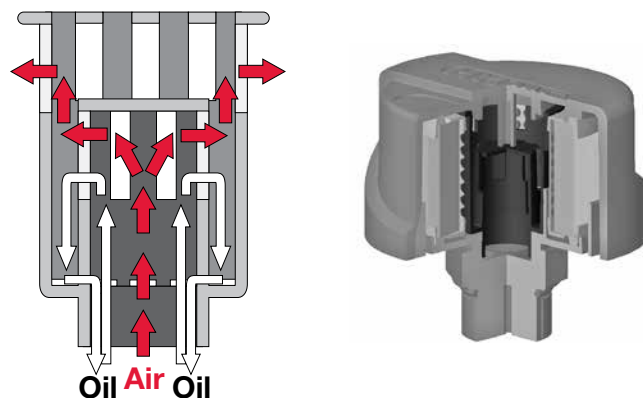


Model Code

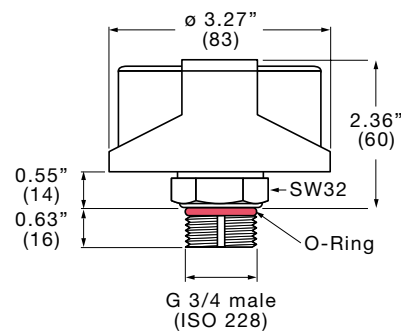
BF P 30 G 3 W 1.0 / -RV0.4 - DS150

Filter Type	BF = Breather
Filter Element Mat.	P = Phenolic Resin Impregnated Paper
Size	30
Type of Connection	G = BSPP N = NPT U = SAE M = Metric Threads
Filtration Rating (micron)	3 = 3µm Air Filtration 10 = 10µm Air Filtration
Gauge Options	W = Without Indicator
Modification Number	
Connection Type	G (BSPP) N (NPT) U (SAE) M (Metric)
	1.0 = G 3/4 3/4 NPT SAE-12 M42x2
	2.0 = - 1 NPT - M30x1.5
Options	(omit) = None RV0.2 = Relief Pressure 3 psi (0.2 bar) RV0.4 = Relief Pressure 6 psi (0.4 bar) RV0.7 = Relief Pressure 10 psi (0.7 bar) AS = Anti-Splash protection (<i>only for version without RV</i>)
Dipstick	DS# = Dipstick (<i>Length follows DS in millimeters</i>) <i>minimum quantities apply</i>

Anti-Splash



Dimensions



Dimensions are for general information only, all critical dimensions should be verified by requesting a certified print. Dimensions are in inches/(mm)

Note: Low temperature options available. All breathers are available with special options and materials. Please contact the factory.