

1.000.000
OPEN AND CLOSE

GE2 HC

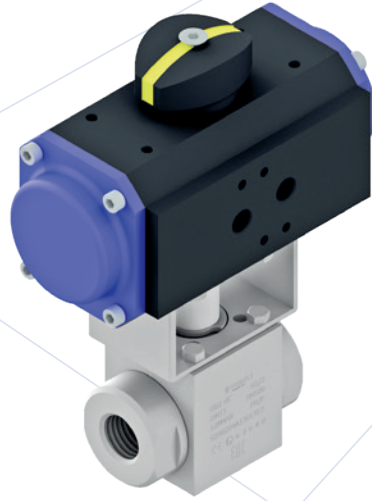
2-WAY HIGH PRESSURE BALL VALVES

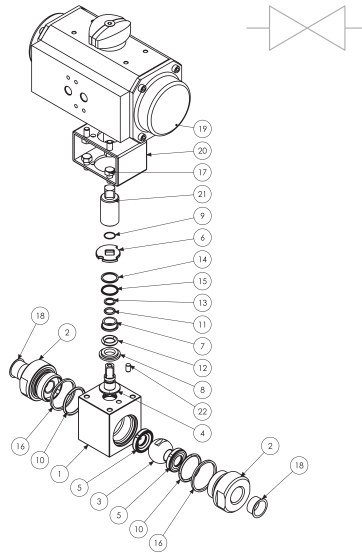
CARBON STEEL

- Type: ball valve GE 2 HC way
- Body: block
- Ball seats: from DN10 up to DN32
- Operating pressure: 500 Bar
depending on valve size and seal materials selected
- Temp range: -20°C to +100°C
depending on seal material selected

STAINLESS STEEL

- Type: ball valve GE 2 HC way
- Body: block
- Ball seats: from DN10 up to DN32
- Operating pressure: 500 Bar
depending on valve size and seal materials selected
- Temp range: -30°C to +100°C
depending on seal material selected





**STANDARD DESIGN:
BARE STEM WITH
ACTUATOR HOLES**

CARBON STEEL				
POS	DESCRIPTION	MATERIAL	Q.TY DN10-13	Q.TY DN20-25-32
1	Body	1,0737	1	1
2	Adapter	1,0460	2	2
3	Ball	1,4404	1	1
4	Stem	1,4542	1	1
5	Ball seat	POM	2	2
6	Washer	1,0116	1	1
7	Upper Bushing	POM - A1000	1	1
8	Lower Bushing	POM - A1000	1	1
9	Seeger	1,4301	1	1
10	Adapter o-ring	NBR	2	2
11	Stem o-ring	NBR	1	1
12	Stem o-ring	NBR	1	/
13	Stem Back-up	PTFE	1	/
14	Stem Back-up	PTFE	1	/
15	Stem quad-ring	NBR	1	1
16	Closure gasket	GRAPHITE	2	2
17	Screws	ISO 4017 8.8	8	8
18	Caps	PVC	2	2
19	Actuator	N/A	1	1
20	Connector	1,0737	1	1
21	Joint	1,0737	1	1
22	Pin	1,0737	1	1

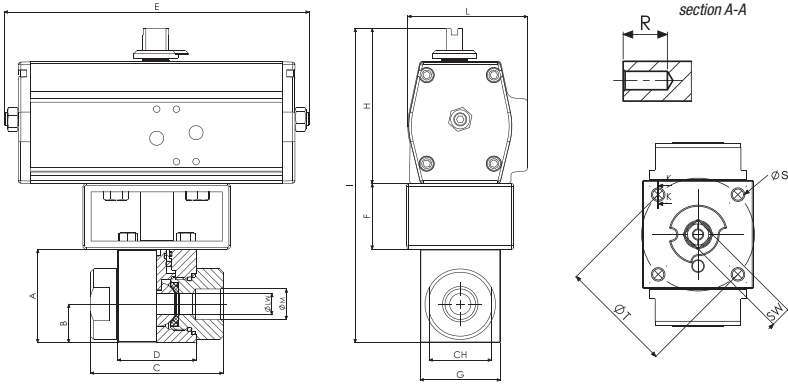
CARBON STEEL										
GE2 HC	G½	DN13	1	2	M	4	A	B		
TYPE AND WAY OF VALVE	GAS DIN/ ISO 228 BSP	NPT ANSI/ ASME B1.20.1	SAE J1926-1	NOMINAL DIMENSION	BODY MATERIAL	ADAPTER MATERIAL	STEM MATERIAL	BALL MATERIAL	BALL SEAT MATERIAL	ADAPTER AND STEM SEAL MATERIAL
GE2 HC	G ¾	N ¾	SAE6	DN10	1 1,0737	2 1,046	M 1,4542	4 1,4404	A POM	B NBR
2-way	G ½	N ½	SAE8	DN13					D PEEK*	E FKM*
	G ¾	N ¾	SAE12	DN20					G PA612*	F EPDM*
	G 1	N 1	SAE16	DN25					K GEMPTFE*	L MVQ*
	G 1 ¼	N 1 ¼	SAE20	DN32					C PTFE*	

STAINLESS STEEL				
POS	DESCRIPTION	MATERIAL	Q.TY DN10-13	Q.TY DN20-25-32
1	Body	1,0737	1	1
2	Adapter	1,0460	2	2
3	Ball	1,4404	1	1
4	Stem	1,4542	1	1
5	Ball seat	POM	2	2
6	Washer	1,0116	1	1
7	Upper Bushing	POM - A1000	1	1
8	Lower Bushing	POM - A1000	1	1
9	Seeger	1,4301	1	1
10	Adapter o-ring	NBR	2	2
11	Stem o-ring	NBR	1	1
12	Stem o-ring	NBR	1	/
13	Stem Back-up	PTFE	1	/
14	Stem Back-up	PTFE	1	/
15	Stem quad-ring	NBR	1	1
16	Closure gasket	GRAPHITE	2	2
17	Screws	ISO 4017 8.8	8	8
18	Caps	PVC	2	2
19	Actuator	N/A	1	1
20	Connector	1,0737	1	1
21	Joint	1,0737	1	1
22	Pin	1,4404	1	1

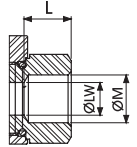
STAINLESS STEEL										
GE2 HC	G½	DN13	4	4	M	4	A	B		
TYPE AND WAY OF VALVE	GAS DIN/ ISO 228 BSP	NPT ANSI/ ASME B1.20.1	SAE J1926-1	NOMINAL DIMENSION	BODY MATERIAL	ADAPTER MATERIAL	STEM MATERIAL	BALL MATERIAL	BALL SEAT MATERIAL	ADAPTER AND STEM SEAL MATERIAL
GE2 HC	G ¾	N ¾	SAE6	DN10	4 1,4404	4 1,4404	M 1,4542	4 1,4404	A POM	B NBR
2-way	G ½	N ½	SAE8	DN13					D PEEK*	E FKM*
	G ¾	N ¾	SAE12	DN20					G PA612*	F EPDM*
	G 1	N 1	SAE16	DN25					K GEMPTFE*	L MVQ*
	G 1 ¼	N 1 ¼	SAE20	DN32					C PTFE*	

*On request: • Pneumatic and electrical actuator

For further special requests please consult our technical/commercial service



**STANDARD DESIGN:
BARE STEM WITH
ACTUATOR HOLES**



GE2 HC DIN/ISO 228 BSP

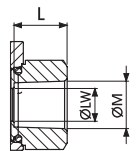
Standard

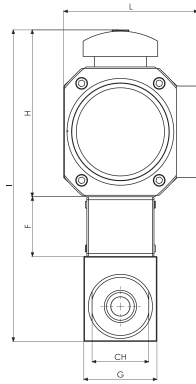
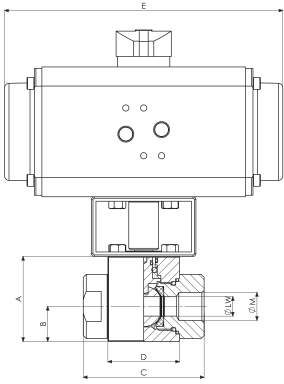
TYPE	PN	DN	A	B	C	D	E	F	G	H	I	L	ØM	CH	ØR	S	T	SW	ØLW	KG	CARBON STEEL	STAINLESS STEEL
																					ITEM CODE	ITEM CODE
GE2 G 1/4	50 MPa	6	57	24,5	73	44	186	40	49	95	192	73	G 1/4	32	9	M6	50	9	10	4,1	G590202A1301TAA	G590202A2P01TAA
GE2 G 3/8	50 MPa	10	57	24,5	73	44	186	40	49	95	192	73	G 3/8	32	9	M6	50	9	10	4,1	G590203A1301TAA	G590203A2P01TAA
GE2 G 1/2	50 MPa	13	57	23,5	81	48	186	40	49	95	192	73	G 1/2	38	9	M6	50	9	13	4,26	G590204A1301TAA	G590204A2P01TAA
GE2 G 3/4	40 MPa	20	65	27	98	62	196	40	55	129	234	105	G 3/4	48	9	M6	50	14	20	8,86	G590205A1301RAA	G590205A2P01RAA
GE2 G 1	35 MPa	25	75	33,5	106	66	196	40	65	129	244	105	G 1	50	9	M6	50	14	25	9,92	G590206A1301PAA	G590206A2P01PAA
GE2 G 1 1/4 R	35 MPa	25	75	33,5	127	66	196	40	65	129	244	105	G 1/4	50	9	M6	50	14	25	10,5	G590207R1301PAA	G590207R2P01PAA
GE2 G 1 1/4	35 MPa	32	87	40,75	127	83	264	40	80	129	117	24	G 1/4	55	12	M8	70	14	32	15,1	G590207A1301PAA	G590207A2P01PAA

GE2 HC ANSI/ASME B1.20.1 NPT

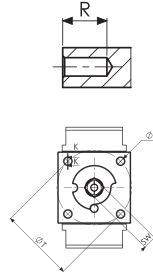
Standard

TYPE	PN	DN	A	B	C	D	E	F	G	H	I	L	ØM	CH	ØR	S	T	SW	ØLW	KG	CARBON STEEL	STAINLESS STEEL
																					ITEM CODE	ITEM CODE
GE2 N 1/4	50 MPa	6	57	24,5	73	44	186	40	49	95	192	73	N 1/4	32	9	M6	50	9	10	4,1	G590902A1301TAA	G590902A2P01TAA
GE2 N 3/8	50 MPa	10	57	24,5	73	44	186	40	49	95	192	73	N 3/8	32	9	M6	50	9	10	4,1	G590903A1301TAA	G590903A2P01TAA
GE2 N 1/2	50 MPa	13	57	23,5	81	48	186	40	49	95	192	73	N 1/2	38	9	M6	50	9	13	4,26	G590904A1301TAA	G590904A2P01TAA
GE2 N 3/4	40 MPa	20	65	27	98	62	196	40	55	129	234	105	N 3/4	48	9	M6	50	14	20	8,86	G590905A1301RAA	G590905A2P01RAA
GE2 N 1	35 MPa	25	75	33,5	106	66	196	40	65	129	244	105	N 1	50	9	M6	50	14	25	9,92	G590906A1301PAA	G590906A2P01PAA
GE2 N 1 1/4 R	35 MPa	25	75	33,5	127	66	196	40	65	129	244	105	N 1/4	50	9	M6	50	14	25	10,5	G590907R1301PAA	G590907R2P01PAA
GE2 N 1 1/4	35 MPa	32	87	40,75	127	83	264	40	80	129	117	24	N 1/4	55	12	M8	70	14	32	15,1	G590907A1301PAA	G590907A2P01PAA

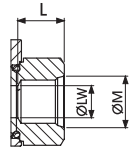




section A-A



**STANDARD DESIGN:
BARE STEM WITH
ACTUATOR HOLES**



GE2 HC SAE J1926-1

Standard

TYPE	PN	DN	A	B	C	D	E	F	G	H	I	L	ØM	ØTM	ØS	R	CH	SW	ØLW	KG	CARBON STEEL	STAINLESS STEEL
																					ITEM CODE	ITEM CODE
GE2 SAE6	50 MPa	10	57	24,5	73	44	186	40	49	95	192	73	9/16 UNF	50	M6	9	32	9	10	4,095	G590B03A1301TAA	G590B03A2P01TAA
GE2 SAE8	50 MPa	13	57	23,5	81	48	186	40	49	95	192	73	3/4 UNF	50	M6	9	38	9	13	4,256	G590B04A1301TAA	G590B04A2P01TAA
GE2 SAE12	40 MPa	20	65	27	98	62	196	40	55	129	234	105	1 1/16 UNF	50	M6	9	48	14	20	8,864	G590B05A1301RAA	G590B05A2P01RAA
GE2 SAE16	35 MPa	25	75	33,5	106	66	196	40	65	129	244	105	1 5/16 UNF	50	M6	9	50	14	25	9,922	G590B06A1301PAA	G590B06A2P01PAA
GE2 SAE20	35 MPa	32	87	40,75	127	83	264	40	80	129	256	105	1 5/8 UNF	70	M8	12	55	14	25	15,092	G590B07A1301PAA	G590B07A2P01PAA