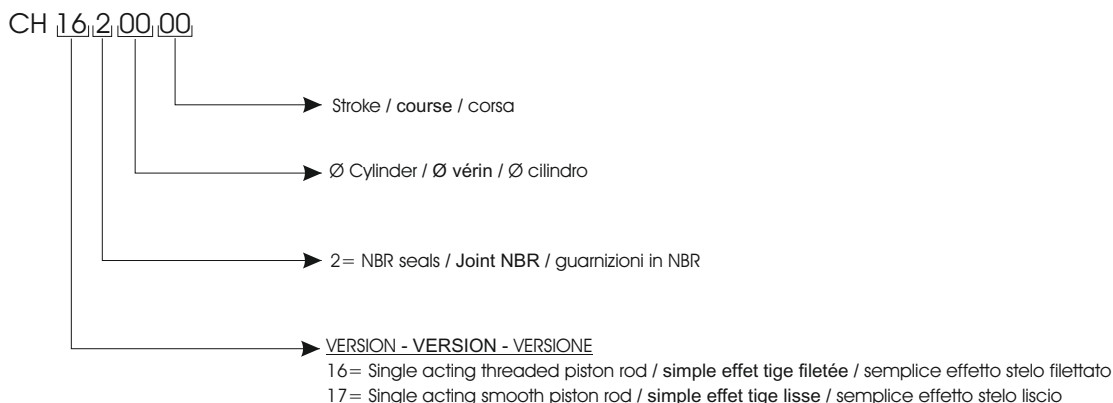


The mini cylinders of the series CH are cylinders with extremely reduced dimensions, have a threaded body which allows to be installed in any part of the machine and, thanks to the use of an OR, it is possible to obtain the air sealing between threaded hole and cylinder.

Les minivérins série CH, sont des vérins de dimensions très contenues, un corps fileté qui lui permet d'être monté en tout point de la machine et avec l'utilisation d'un joint, il est possible d'obtenir l'étanchéité à l'air entre le trou fileté et le vérin.

I minicilindri della serie CH, sono cilindri dalle dimensioni estremamente contenute, hanno un corpo filettato che gli permette di essere montato in qualsiasi punto della macchina e con l'utilizzo di un OR, è possibile ottenere la tenuta aria tra il foro filettato e il cilindro stesso.

ORDERING CODE / CODIFICATION / CHIAVE DI CODIFICA



STANDARD STROKES / COURSE STANDARD / CORSE STANDARD

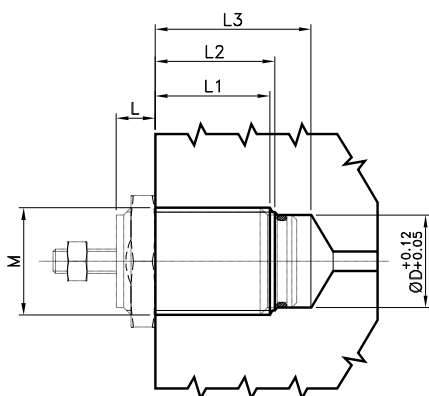
Single acting / simple effet / Semplice effetto

Ø6	mm 05-10-15
Ø10	mm 05-10-15
Ø16	mm 05-10-15

TECHNICAL DATA / DONNÉES TECHNIQUES / DATI TECNICI

Fluid / Fluide / Fluido	Lubricated or non lubricated air / Air avec ou sans lubrification / Aria con o senza lubrificazione
Operating temperature range / Température d'utilisation / Temperatura di esercizio	-20C° / +80C°
Max operating pressure / Pression max d'utilisation / Pressione massima di esercizio	6 bar
Force / Force / Forze sviluppate	Technical informations page / Page informations techniques / Pagina dati tecnici
Air consumption / Consommation d'air / Consumo aria	Technical informations page / Page informations techniques / Pagina dati tecnici

POSSIBLE INSTALLATION / MONTAGE POSSIBLE / POSSIBILE MONTAGGIO

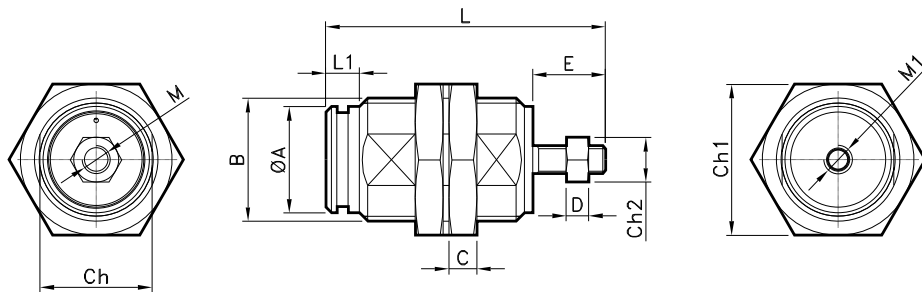
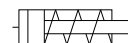


Dimensions for machining cylinder seat / Dimensions pour usinage siége du vérin / Dimensioni per la lavorazione sede cilindro

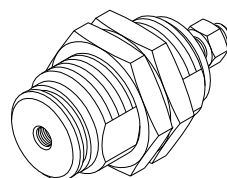
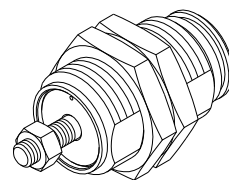
Ø	M	L / C			L1 / C			L2 / C			L3 / C			ØD
		5	10	15	5	10	15	5	10	15	5	10	15	
6	M10x1	5	5	5	10	17	24	12	19	26	16	24	31	8.5
10	M15x1.5	6	6	6	11	17	24	13	19	26	20	26	34	12
16	M22x1.5	7	7	7	15	20	25	17	21	27	26	31	36	19

Threaded piston rod / Tige filetée / Stelo filettato

CODE: CH162.Ø.mm

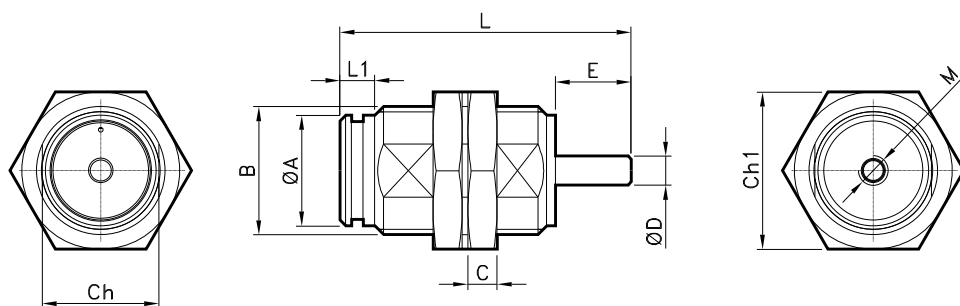


Ø	ØA	B	Ch1	C	Ch2	D	E	L(05-10-15)	L1	M	M1	Ch
6	8.5	M10x1	14	3	5.5	2.4	8	27.5-34.5-41.5	5	M3	M5	9
10	12	M15x1.5	19	4	7	3.2	10.5	33.5-40-47	7	M4	M5	14
16	19	M22x1.5	27	5	8	4	13	40-45-50	6	M5	M5	20



Smooth piston rod / Tige lisse / Stelo liscio

CODE: CH172.Ø.mm



Ø	ØA	B	Ch1	C	D	E	L(05-10-15)	L1	M	Ch
6	8.5	M10x1	14	3	3	8	27.5-34.5-41.5	5	M5	9
10	12	M15x1.5	19	4	4	10.5	33.5-40-47	7	M5	14
16	19	M22x1.5	27	5	5	13	40-45-50	6	M5	20

