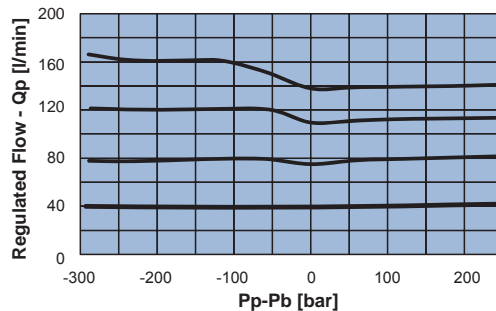
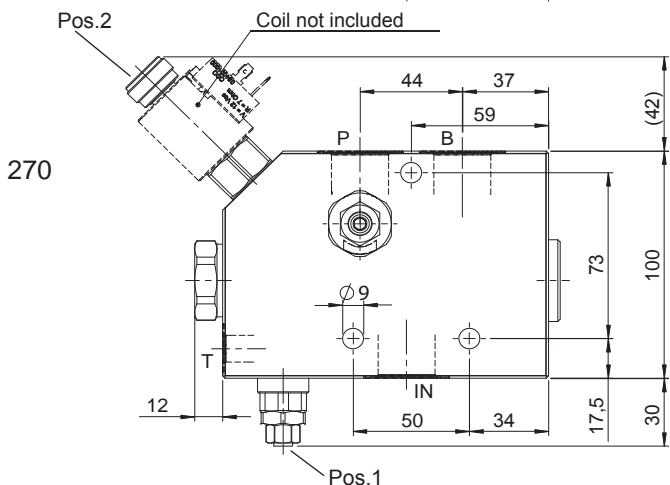
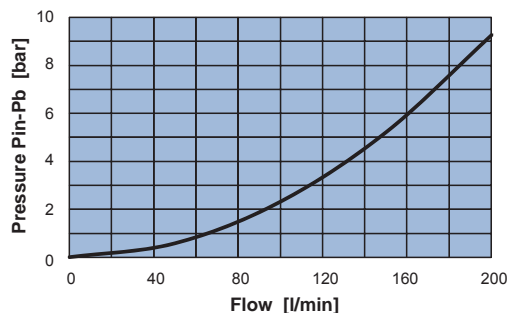
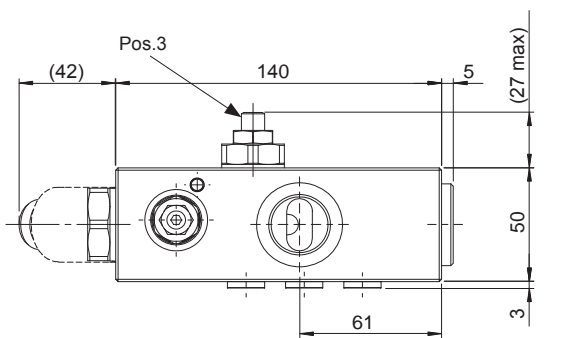
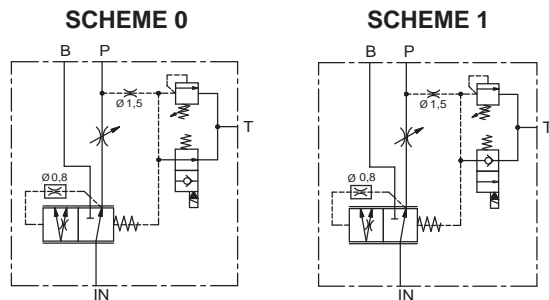


FLOW REGULATOR - G3/4" , SAE12

- Nominal Flow (IN)..... **200 l/min**
- Max pressure..... **350 bar**
- Max regulated flow (P)..... **140 l/min**
- Standard regulated flow..... **30 l/min**
- Regulated flow variation by turn (Pos.3)..... **15,5 l/min**
- Weight..... **5 Kg**
- Coil **CT-9400** to be ordered separately



Note:

- The flow (P) can be regulated at the required value, acting on adjustable screw (pos. 3); flow gets increased when the screw is clockwise turned.
- Max leakage in T: 3l/min.
- Max backpressure in T: 1,5 Bar
- For optimal functionality of the compensator, when the electric valve (pos. 2) is open, it's important to make sure that regulated line OUT is pressurized at 7,5 Bar at least. If not, a unidirectional valve must be installed, to supply the required backpressure (see **D-R-M/F-V**).

Ordering code

FR3S **0**

ELECTRIC-VALVE SCHEME	
0	Normally open - NO
1	Normally closed - NC

SPRING	2	3
Setting Range [bar]	40 - 220	50 - 350
Pressure Increase [bar/giro]	84	127
Standard Setting [bar]	210	350

PORTS	05
IN,P,B	G 3/4"
T	G 1/4"

RELIEF VALVE SETTING RANGE POS. 1