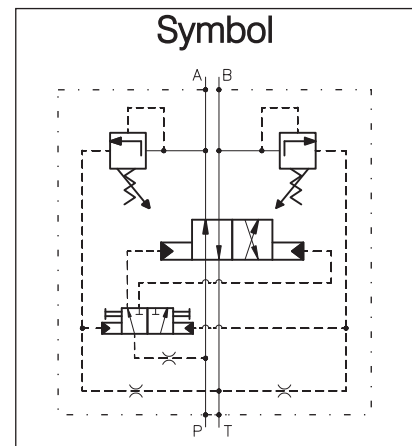
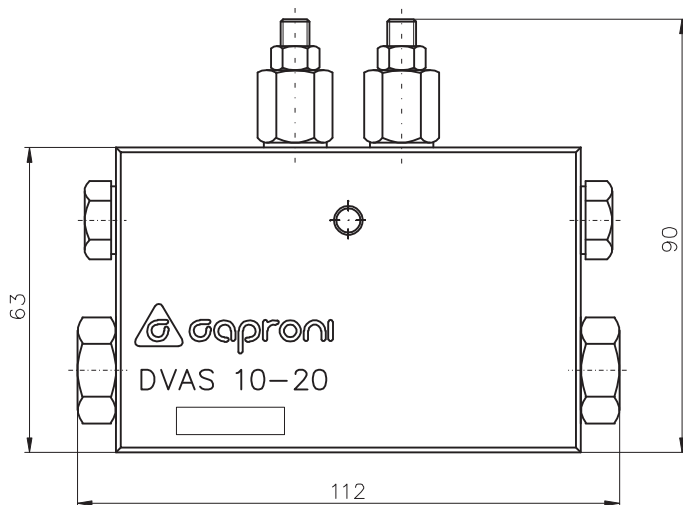
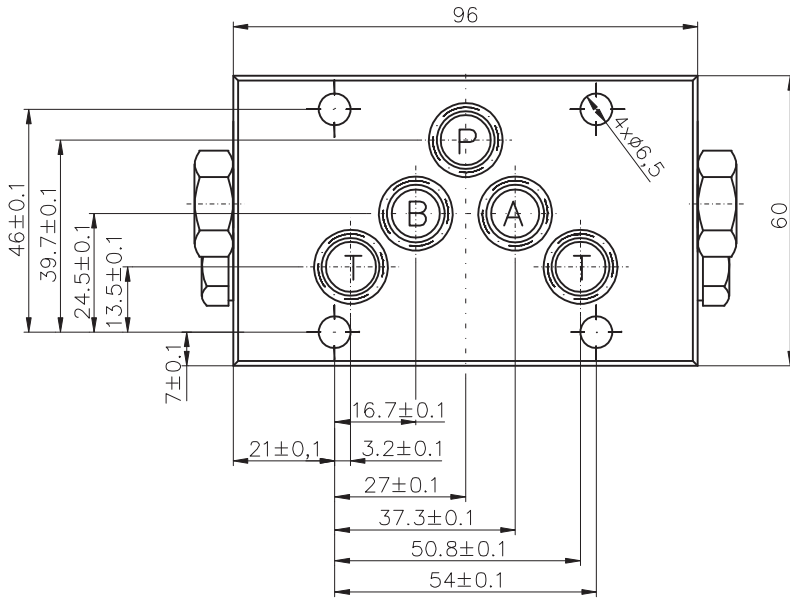


GENERAL DESCRIPTION

Flow automatically reverses direction from P-A to P-B when the setting value of pressure relief valves is reached.

- ✓ 4/2- way directional control valves with hydraulic pilot operation
- ✓ Manual override option
- ✓ Reliability and long life
- ✓ Mounting surface CETOP5 (NG10)


ORDERING CODE

DVAS 10 - 20 ...

Automatic switch directional control valve

Nominal size

Pressure range:

Omit- 50...200bar.
V1 - 0...100bar.

Direction of flow(symbol 20)

TECHNICAL DATA
GENERAL

| DATA | UNIT | VALUE/RANGE |
|--------------------------|------|-----------------------|
| Installation position | | preferably horizontal |
| Max. ambient temperature | °C | -20...+50 |
| Weight | kg | 2,400 |

HYDRAULIC

| | | |
|--|--------------------------------|-------------------------------|
| Max. pressure | MPa | 21 |
| Maximum flow | l/min | 80 |
| Minimum flow | l/min | 4 |
| Hydraulic fluid - mineral oil: -viscosity -filtration degree -temperature | mm ² /s mm °C | 10...800 0.025 -20...80 |