

**OVAL SWITCH
CAPTEUR OVAL
SENSORE OVALE**



The cylinders on which it is possible to assemble the oval switch are:
Les vérins sur lesquels vous pouvez monter le capteur ovale sont:
I cilindri su cui è possibile montare il sensore ovale sono:

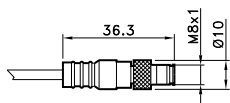
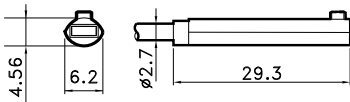
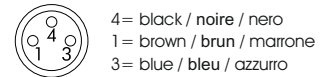
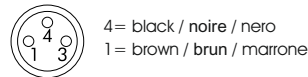
SERIES / SERIES / SERIE

- CY cylinders ISO 15552 / vérins ISO 15552 / cilindri ISO 15552
- CZ cylinders ISO 15552 / vérins ISO 15552 / cilindri ISO 15552
- CA twin rod cylinders / vérins bitiges / cilindri ad aste gemellate
- CM compact cylinders ISO 21287 / vérins compact ISO 21287 / cilindri compatti ISO 21287
- CC guide compact cylinders / vérins compacts guide / cilindri compatti guidati
- SS rodless cylinders / vérins sans tige / cilindri senza stelo
- RY rotary cylinders / vérins rotatifs / cilindri rotanti

TECHNICAL DATA / DONNÉES TECHNIQUES / DATI TECNICI

	REED	HALL
Sensor type / Type de capteur / Tipo sensore	Reed NA / NO	PNP NA/NO
Protection class / Grade de protection / Grado di protezione	IP 67	IP 67
Working temp. / Température de travail / Temperatura di impiego	-10C° +70C°	-10C° +70C°
Housing material / Matériel / Materiale custodia	PA	PA
Sheath material / Matériel de la gaine / Materiale guaina	PVC	PVC
Power supply / Tension d'alimentation / Tensione di alimentazione	3-30 VAC/VDC	Hall 6-30 VDC
Switching current / Courant de commutation / Corrente di commutazione	0,2 A	0,2 A
ON voltage drop / Surtension tension / Caduta di tensione	<3 V	<1 V
Nominal operate poin / Point de travail nominal / Punto di lavoro nominale	20 - 25 AT	40 Gauss (34 - 46 Gauss)
ON-OFF differential / Différenciel ON-OFF / Differenza ON-OFF	5 - 10 AT	5 - 15 Gauss
On time / Temps ouverture / Tempo inserzione	0,5mS	0,8 uS
Off time / Temps de fermeture / Tempo disinserzione	0,1mS	0,3 uS
Wiring schematics / Configuration du circuit / Configurazione circuiti		

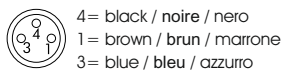
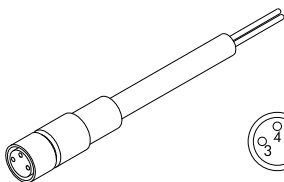
M8 connector / Connecteur M8 / Connettore M8



OVAL SWITCH / CAPTEUR OVAL / SENSORE OVALE

CODE

AR4019010	REED (MT,2,5) / REED (MT,2,5) / REED (MT,2,5)
AR4019020	HALL (MT,2,5) / HALL (MT,2,5) / HALL (MT,2,5)
AR4019110	REED + M8 (CM 30) / REED + M8 / REED + M8 (CM 30)
AR4019120	HALL + M8 (CM 30) / HALL + M8 / HALL + M8 (CM 30)

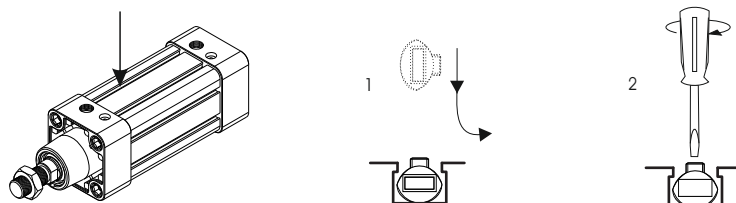


EXTENSION CABLE 2,5 mt / EXTENSION CORD 2,5 mt / PROLUNGA CAVO 2,5 mt

CODE

AR4300	WITH M8 2 WIRES / M8 AVEC 2 CÂBLES / CON M8 2 FILI
AR4301	WITH M8 3 WIRES / M8 AVEC 3 CÂBLES / CON M8 3 FILI

MOUNTING / MONTAGE / MONTAGGIO



**T SWITCH
CAPTEUR A T
SENSORE A T**

The cylinders on which it is possible to assemble the T switch are:
Les vérins sur lesquels vous pouvez monter le capteur de T sont:
I cilindri su cui è possibile montare il sensore a T sono:

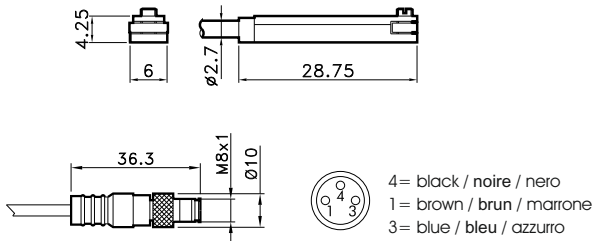
SERIES / SERIES / SERIE

- MC cylinders ISO 6432 / vérins ISO 6432 / cilindri ISO 6432
- MX cylinders ISO 6432 stainless steel / vérins ISO 6432 inox / cilindri ISO 6432 Inox
- CT round cylinders / vérins ronds / cilindri tondi
- CQ cylinders ISO 15552 (160-200-250) / vérins ISO 15552 (160-200-250) / cilindri ISO 15552 (160-200-250)
- CM compact cylinders ISO 21287 / vérins compacts ISO 21287 / cilindri compatti ISO 21287
- CX cylinders ISO 15552 stainless steel / vérins ISO 15552 Inox / cilindri ISO 15552 Inox
- CC guide compact cylinders / vérins compacts guide / cilindri compatti guidati
- SS rodless cylinders / vérins sans tige / cilindri senza stelo
- BS rod locks / blocs tiges / bloccasteli
- ST stopper cylinders / vérins stoppeur / cilindri stopper



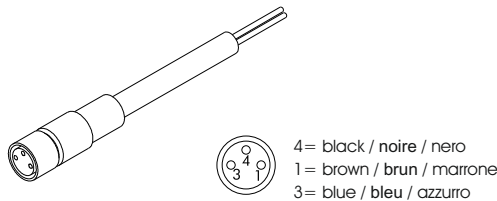
TECHNICAL DATA / DONNÉES TECHNIQUES / DATI TECNICI

	REED	HALL
Sensor type / Type de capteur / Tipo sensore	Reed NA / NO	PNP NA/NO
Protection class / Grade de protection / Grado di protezione	IP 67	IP 67
Working temp. / Température de travail / Temperatura di impiego	-10C° +70C°	-10C° +70C°
Housing material / Matériel / Materiale custodia	PA	PA
Sheath material / Matériel de la gaine / Materiale guaina	PVC	PVC
Power supply / Tension d'alimentation / Tensione di alimentazione	3-30 VAC/VDC	Hall 6-30 VDC
Switching current / Courant de commutation / Corrente di commutazione	0,2 A	0,2 A
ON voltage drop / Surtension tension / Caduta di tensione	<3 V	<1 V
Nominal operate poin / Point de travail nominal / Punto di lavoro nominale	20 - 25 AT	40 Gauss (34 - 46 Gauss)
ON-OFF differential / Différenciel ON-OFF / Differenza ON-OFF	5 - 10 AT	5 - 15 Gauss
On time / Temps ouverture / Tempo inserzione	0,5mS	0,8 uS
Off time / Temps de fermeture / Tempo disinserzione	0,1mS	0,3 uS
Wiring schematics / Configuration du circuit / Configurazione circuiti		
M8 connector / Connecteur M8 / Connettore M8	 4= black / noire / nero 1= brown / brun / marrone	 4= black / noire / nero 1= brown / brun / marrone 3= blue / bleu / azzurro



T SWITCH / CAPTEUR A T / SENSORE A T

CODE	
AR4023010	REED (MT.2,5) / REED (MT.2,5) / REED (MT.2,5)
AR4023020	HALL (MT.2,5) / HALL (MT.2,5) / HALL (MT.2,5)
AR4023110	REED + M8 (CM 30) / REED + M8 / REED + M8 (CM 30)
AR4023120	HALL + M8 (CM 30) / HALL + M8 / HALL + M8 (CM 30)



EXTENSION CABLE 2,5 mt / EXTENSION CORD 2,5 mt / PROLUNGA CAVO 2,5 mt

CODE	
AR4300	WITH M8 2 WIRES / M8 AVEC 2 CÂBLES / CON M8 2 FILI
AR4301	WITH M8 3 WIRES / M8 AVEC 3 CÂBLES / CON M8 3 FILI