

Pneumatic and solenoid valves complying with NAMUR norms (direct assembly).
Valves are entirely made in aluminium, to improve the solidity and the durability.
Available size is 1/4 and available functions are 3/2 and 5/2.

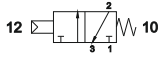
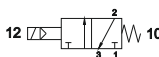
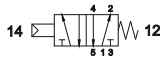
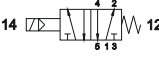
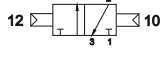
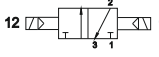


La valve pneumatique et électrique a un plan de pose Namur (norme pour assemblage direct) est en aluminium, ce qui renforce sa robustesse et sa fiabilité.
Elle est disponible en 1/4 fonction 3/2 et 5/2

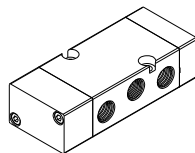
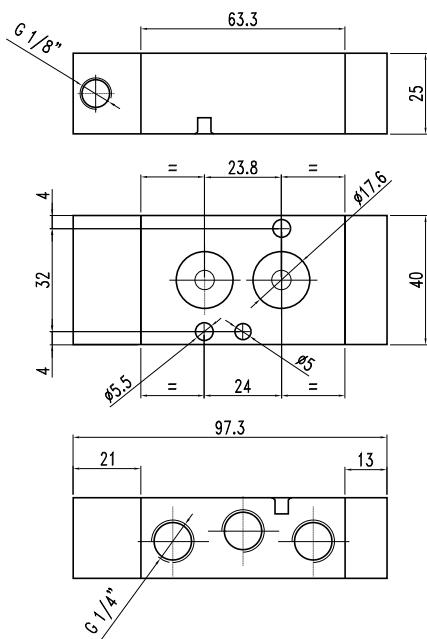
Valvole ad azionamento pneumatico ed elettrico con posa di montaggio diretto NAMUR.
Costruzione interamente in alluminio per aumentare la robustezza e la durata nel tempo.
Disponibili nella taglia 1/4 e nelle funzioni 3/2 e 5/2.

TECHNICAL DATA / DONNEES TECHNIQUES / DATI TECNICI

Flow rate 6 bar Δp 1 bar / Débit a 6 bar Δp 1 bar / Portata a 6 bar Δp 1 bar	1100 Nl/min
Nominal orifice / Diamètre nominal / Diametro nominale	7.5mm
Response time pneumatic / Temps de réponse pneu. / Tempi di risposta pneumatico	
* monostable / monostable / monostabile	TRA 7ms / TRR 15ms
* bistable / bistable / bistabile	TRA 7ms / TRR 7ms
Response time solenoid / Temps de réponse elect. / Tempi di risposta elettrico	
* monostable / monostable / monostabile	TRA 19ms / TRR 45ms
* bistable / bistable / bistabile	TRA 22ms / TRR 22ms
Pressure range / Pression d'utilisation / Pressione di esercizio	
* monostable / monostable / monostabile	2.5 ÷ 10bar
* bistable / bistable / bistabile	1 ÷ 10bar
Temperature range / Température d'utilisation / Temperatura di esercizio	-10 C° ÷ +60c°

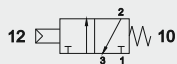
FAST SELECT / SELECTION RAPIDE / SELEZIONE RAPIDA

 Pneum. monostable / Pneum.monostable / Pneum.monostabile VU43PNMNC 3/2 1/4 NC / NF / NC	 Solenoid monostable / Électrique monostable / Eletri. monostabile VU43ELMNC 3/2 1/4 NC / NF / NC
 Pneum. monostable / Pneum.monostable / Pneum.monostabile VU45PNM00 5/2 1/4	 Solenoid monostable / Électrique monostable / Eletri. monostabile VU45ELM00 5/2 1/4
 Pneum. bistable / Pneum.bistable / Pneum.bistabile VU43PNB00 3/2 1/4	 Solenoid bistable / Électrique bistable / Eletri. bistabile VU43ELB00 3/2 1/4
 Pneum. bistable / Pneum.bistable / Pneum.bistabile VU45PNB00 5/2 1/4	 Solenoid bistable / Électrique bistable / Eletri. bistabile VU45ELB00 5/2 1/4



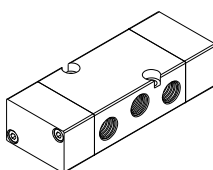
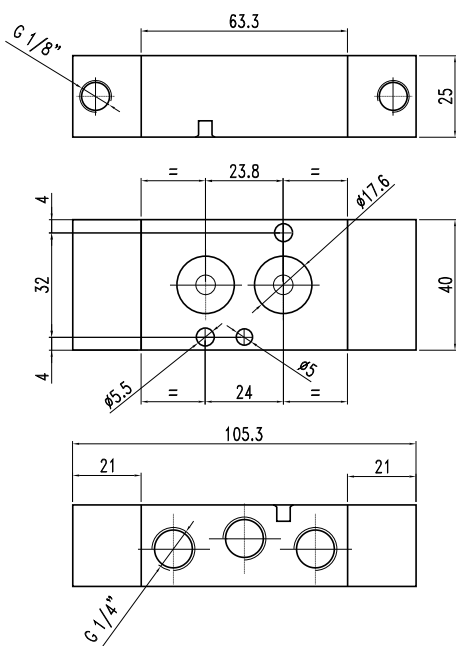
1/4 - 3/2 NC pneumatic pilot monostable
1/4 - 3/2 NF commande pneumatique monostable
1/4 - 3/2 NC comando pneumatico monostabile

CODE: VU43PNMNC



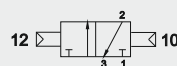
1/4 - 5/2 pneumatic pilot monostable
1/4 - 5/2 commande pneumatique monostable
1/4 - 5/2 comando pneumatico monostabile

CODE: VU45PNM00



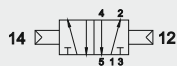
1/4 - 3/2 pneumatic pilot bistable
1/4 - 3/2 commande pneumatique bistable
1/4 - 3/2 comando pneumatico bistabile

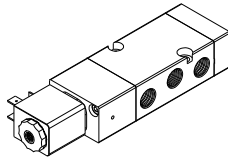
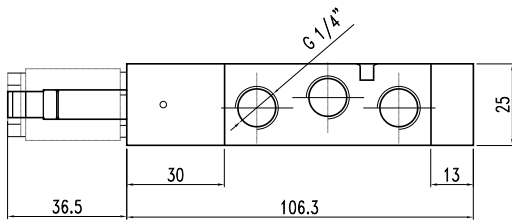
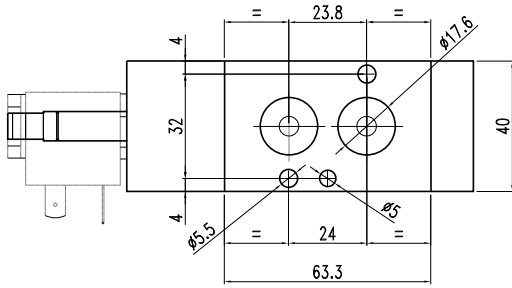
CODE: VU43PNB00



1/4 - 5/2 pneumatic pilot bistable
1/4 - 5/2 commande pneumatique bistable
1/4 - 5/2 comando pneumatico bistabile

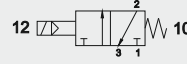
CODE: VU45PNB00





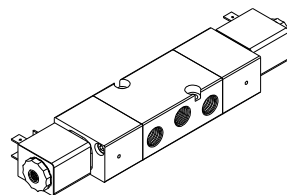
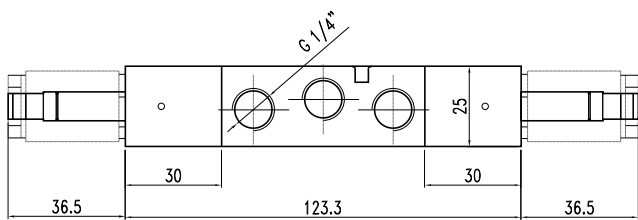
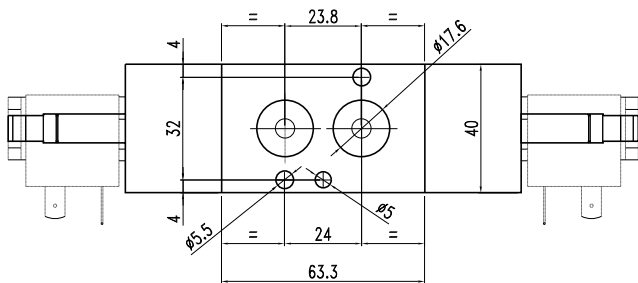
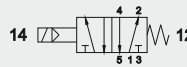
1/4 - 3/2 NC solenoid pilot monostable
1/4 - 3/2 NF commande électrique monostable
1/4 - 3/2 NC comando elettrico monostabile

CODE: VU43ELMNC



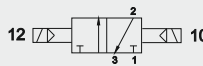
1/4 - 5/2 solenoid pilot monostable
1/4 - 5/2 commande électrique monostable
1/4 - 5/2 comando elettrico monostabile

CODE: VU45ELM00



1/4 - 3/2 solenoid pilot bistable
1/4 - 3/2 commande électrique bistable
1/4 - 3/2 comando elettrico bistabile

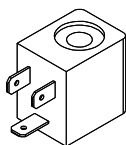
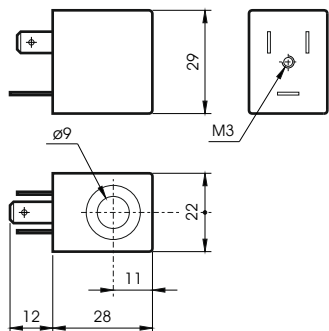
CODE: VU43ELB00



1/4 - 5/2 solenoid pilot bistable
1/4 - 5/2 commande électrique bistable
1/4 - 5/2 comando elettrico bistabile

CODE: VU45ELB00





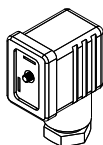
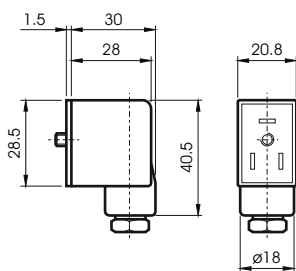
COILS
BOBINE
BOBINE

Power / Absorption / Assorbimento

CODE	tension	rated	inrush
	tensione	résistance	de sortie
	tensione	a regime	di spunto
BO4011024	24 VDC	3W	
BO4012024	24 VAC	5VA	7,5VA
BO4012110	110 VAC	5VA	7,5VA
BO4012220	220 VAC	5VA	7,5VA

TECHNICAL SPECIFICATIONS
CARACTERISTIQUES TECHNIQUES
CARATTERISTICHE TECNICHE

Tension tolerance / Tolérance / Tolleranza di tensione	+10%
Protection with connector / Protection avec connecteur / Protezione con connettore	IP65
Max working temperature / Température max d'utilisation / Temperatura max di esercizio	+50 C°
Duty cycle / Temps d'enclenchement / Inserimento	ED 100%



CONNECTORS
CONNECTEURS
CONNETTORI

CODE	
AR40696	STANDARD
VX0014	LED 24V
VX0015	LED 110V
VX0016	LED 220V
VX0017	LED+VDR 24V
VX0018	LED+VDR 110V
VX0019	LED+VDR 220V