

Airwork's solenoid valves combine big resistance, reliability and versatility of assemblage; the VY series can be assembled in several ways: In-line, on panel, on multiple bases, on manifolds and on cylinders. Available size are 1/8, 1/4 and 1/2, the available functions are 3/2, 5/2 e 5/3.

La série des électro distributeurs à raccordement direct série VY d'AIRWORK a des caractéristiques multiples de robustesse, de fiabilité et de montage. En ligne, sur embase multiple, assemblée et directement sur le vérin. Elle est disponible en taille 1/8, 1/4 et 1/2 ainsi qu'en fonction 3/2, 5/2 et 5/3.

La serie di elettrovalvole di Airwork, possiedono caratteristiche di grande robustezza, affidabilità e versatilità di montaggio, infatti la serie VY si possono montare in diversi modi: in linea, a parete, su base multipla, su collettori e persino su cilindro. Sono disponibili in tra taglie 1/8, 1/4 e 1/2 nelle funzioni 3/2, 5/2 e 5/3.

TECHNICAL DATA / DONNEES TECHNIQUES / DATI TECNICI

Flow rate 6 bar Δp 1 bar / Débit a 6 bar Δp 1 bar / Portata a 6 bar Δp 1 bar	1/8=550 NI/min - 1/4=1100 NI/min - 1/2=4600NI/min
Nominal orifice / Diamètre nominal / Diametro nominale	1/8=5mm - 1/4=7.5mm - 1/2=13mm
Response times mono-stable / Temps réponse monostable / Tempi risposta monostabile	(1/8=TRA 15ms / TRR 35ms) (1/4=TRA 19ms / TRR 45ms) (1/2=TRA 39ms / TRR 60ms)
Response times bi-stable / Temps réponse bistable / Tempi risposta bistabile	(1/8=TRA 20ms / TRR 20ms) (1/4=TRA 22ms / TRR 22ms) (1/2=TRA 90ms / TRR 90 ms)
Coils tension / Tension bobine / Tensione bobine	24VDC - 24VAC - 110VAC - 220VAC 50/60Hz
Pressure range / Pression d'utilisation / Pressione di esercizio	
* Monostable / Monostable / Monostabile	2.5 ÷ 10bar
* Bistable / Bistable / Bistabile	1 ÷ 10bar
* Separated air supply / Alimentation séparée / Alimentaz.separata	max 10bar
Temperature range / Temperature d'utilisation / Temperatura di esercizio	-10 C° ÷ +60c°
Voltage tolerance / Tolerance / Tolleranza tensione	±10%
Power consumption / Absorbition / Assorbimento	2W (DC) - 3VA (AC)
Isulation / Classe / Isolamento	classe F

FAST SELECT / SELECTION RAPIDE / SELEZIONE RAPIDA

	monostable / monostable / monostabile VY83ELMNC 3/2 1/8 NC / NF / NC VY43ELMNC 3/2 1/4 NC / NF / NC VY23ELMNC 3/2 1/2 NC / NF / NC	separate air supply / alimentation séparée / alimentazione separata VY85EAB00 5/2 1/8 VY45EAB00 5/2 1/4 VY25EAB00 5/2 1/2
	monostable / monostable / monostabile VY83ELMNA 3/2 1/8 NO / NO / NA VY43ELMNA 3/2 1/4 NO / NO / NA VY23ELMNA 3/2 1/2 NO / NO / NA	monostable / monostable / monostabile VY86ELMCC 5/3 1/8 CC / CF / CC VY46ELMCC 5/3 1/4 CC / CF / CC VY26ELMCC 5/3 1/2 CC / CF / CC
	separate air supply / alimentation séparée / alimentazione separata VY83EAMNC 3/2 1/8 NC / NF / NC VY43EAMNC 3/2 1/4 NC / NF / NC VY23EAMNC 3/2 1/2 NC / NF / NC	monostable / monostable / monostabile VY86ELMCA 5/3 1/8 CO / CO / CA VY46ELMCA 5/3 1/4 CO / CO / CA VY26ELMCA 5/3 1/2 CO / CO / CA
	bistable / bistable / bistabile VY83ELB00 3/2 1/8 VY43ELB00 3/2 1/4 VY23ELB00 3/2 1/2	monostable / monostable / monostabile VY86ELMCP 5/3 1/8 CP / CP / CP VY46ELMCP 5/3 1/4 CP / CP / CP VY26ELMCP 5/3 1/2 CP / CP / CP
	separate air supply / alimentation séparée / alimentazione separata VY85EAB00 5/2 1/8 VY45EAB00 5/2 1/4 VY25EAB00 5/2 1/2	separate air supply / alimentation séparée / alimentazione separata VY86EAMCC 5/3 1/8 CC / CF / CC VY46EAMCC 5/3 1/4 CC / CF / CC VY26EAMCC 5/3 1/2 CC / CF / CC
	monostable / monostable / monostabile VY85ELM00 5/2 1/8 VY45ELM00 5/2 1/4 VY25ELM00 5/2 1/2	separate air supply / alimentation séparée / alimentazione separata VY86EAMCA 5/3 1/8 CO / CO / CA VY46EAMCA 5/3 1/4 CO / CO / CA VY26EAMCA 5/3 1/2 CO / CO / CA
	separate air supply / alimentation séparée / alimentazione separata VY85EAM00 5/2 1/8 VY45EAM00 5/2 1/4 VY25EAM00 5/2 1/2	separate air supply / alimentation séparée / alimentazione separata VY86EAMCP 5/3 1/8 CP / CP / CP VY46EAMCP 5/3 1/4 CP / CP / CP VY26EAMCP 5/3 1/2 CP / CP / CP
	double solenoid / double commande elect. / doppio comando elettrico VY85ELB00 5/2 1/8 VY45ELB00 5/2 1/4 VY25ELB00 5/2 1/2	

THE KEY POINTS / LES POINTS CLES / I PUNTI DI FORZA

Spool seals high quality to guarantee operation under all conditions and temperatures.

Joints tiroir de haute qualité pour assurer un fonctionnement sans problème dans toutes les conditions et les températures.

Guarnizioni spola ad altissima qualità per garantire un funzionamento perfetto in tutte le condizioni e temperatura.

Manual operating in steel nickel-plated unlike the plastic component this one provides strength and precision even after many interventions.

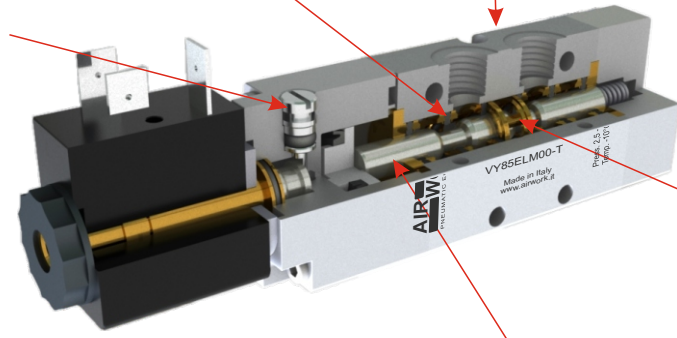
Commande manuelle en acier plaqué au nickel à différence du composant en plastique présente une résistance et fournit une précision même après de nombreuses interventions.

L'intervento manuale in acciaio nichelato a differenza di componenti in plastica, fornisce la resistenza e precisione anche dopo molti interventi.

Valve's body is very important and it is realized from a full bar, turned and milled on CNC machines, then anodized to give more strength to it and painted to cover any possible outside imperfection.

Le corps de vanne est très important et il est réalisé à partir d'un bar, tournées et fraisées sur des machines CNC, puis anodisé pour donner plus de force et peint.

Il corpo valvola è molto importante ed è realizzato da una barra piena, tornito e fresato su macchine a controllo numerico, quindi anodizzato per dare più durezza alla superficie e poi verniciato.



Spacer cages in brass.

Unlike the plastic, brass ones do not deform with the change of temperature, giving more stability to the seals and avoiding any possible backlash.

Cages d'espacement en laiton.

Contrairement à la matière plastique, les cuivres ne déforment pas avec le changement de température, ce qui donne une plus grande stabilité des joints et d'éviter toute réaction possible.

Le gabbie distanziali in ottone a differenza della plastica, l'ottone non si deforma con il cambiamento di temperatura dando maggiore stabilità alle guarnizioni ed evitando ogni possibile reazione.

Other strengths / Autres points forts / Altri punti di forza

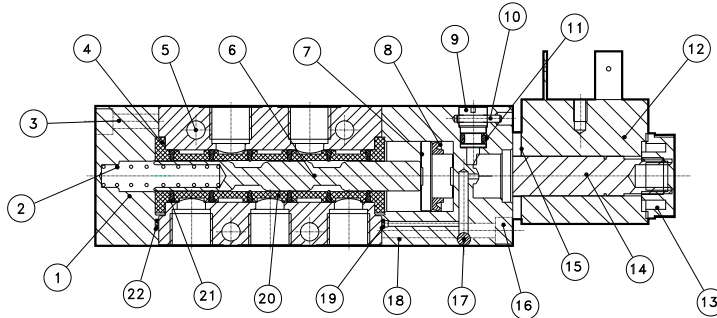
- Guaranteed for 50 million cycles / Garanti pour 50 millions de cycles / Garantita per 50 milioni di cicli.
- Manifolds mounting / Collecteurs de montage / collettori di montaggio.
- Wall mounting / montage mural / montaggio a parete
- Cylinder mounting / Montage sur vérin / montaggio su cilindro
- Strong and stylish packaging / emballage solide et élégant / imballaggio solido ed elegante

Machined aluminum spool precisely finished with chemical nickel treatment: the result is very low roughness and a longer duration of seals

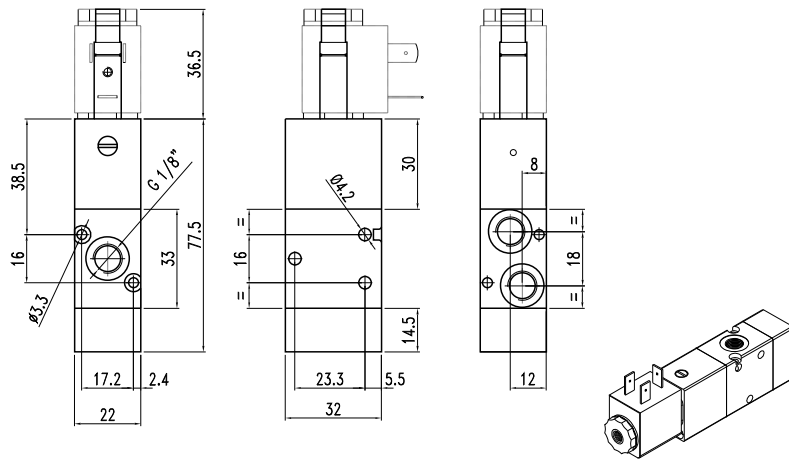
Tiroir en aluminium usinées fini précisément avec le traitement de nickel chimique: le résultat est très faible rugosité et une plus longue durée de joints

Spola in alluminio lavorato con finitura di precisione con trattamento di nichelatura chimica: il risultato è una rugosità molto bassa e una maggiore durata delle guarnizioni spola.

COMPONENTS / COMPOSANTS / COMPONENTI

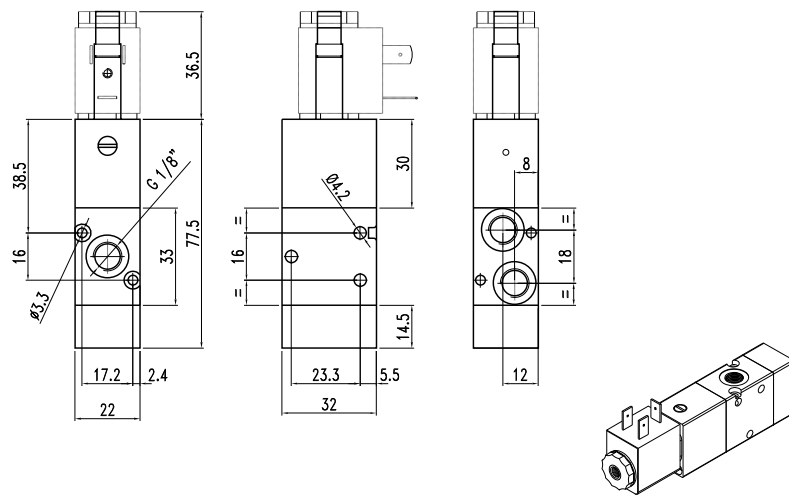
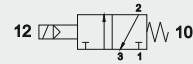


pos.	description / description / descrizione	material / matiere / materiale
1	spring bottom / fond ressort / fondello molla	plastic and aluminium / plastic et aluminium / plastica e alluminio
2	spring / ressort / molla	C98 steel / acier C98 / acciaio C98
3	screw / vis / vite	steel / acier / acciaio
4	spool distance / tiroir distanciel / distanziale spola	brass / laiton / ottone
5	body valve / corps valve / corpo valvola	aluminium / aluminium / alluminio
6	spool / tiroir / spola	aluminium / aluminium / alluminio
7	piston / piston / pistone	Delring 500
8	piston seal / joint piston / guarnizione pistone	NBR
9	manual operating / commande manuelle / intervento manuale	brass / laiton / ottone
10	plug / rotor / spina	steel / acier / acciaio
11	o-ring / joint torique	NBR
12	coil / bobine / bobina	
13	nut M8x0,75 / ecrou M8x0,75 / dado M8x0,75	plastic / plastique / plastica
14	tube / tube / tubetto	brass / laiton / ottone
15	tube plaque / tube / piastrina tubetto	steel / acier / acciaio
16	screw / vis / vite	steel / acier / acciaio
17	sphere / sphere / sfera	steel / acier / acciaio
18	electric bottom / fond electrique / fondello elettrico	plastic and aluminium / plastic et aluminium / plastica e alluminio
19	o-ring / joint torique	NBR
20	cage distance / cage distance / distanziale gabbia	brass / laiton / ottone
21	spool seal / joint du tiroir / guarnizioni spola	NBR
22	o-ring / joint torique	NBR



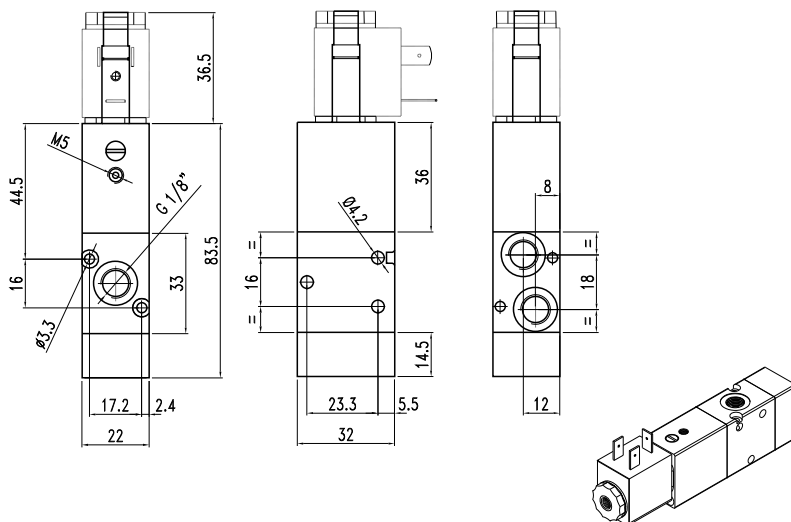
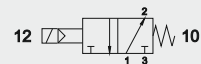
1/8 - 3/2 NC monostable
1/8 - 3/2 NF monostable
1/8 - 3/2 NC monostabile

CODE: VY83ELMNC



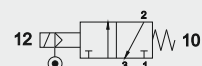
1/8 - 3/2 NO monostable
1/8 - 3/2 NO monostable
1/8 - 3/2 NA monostabile

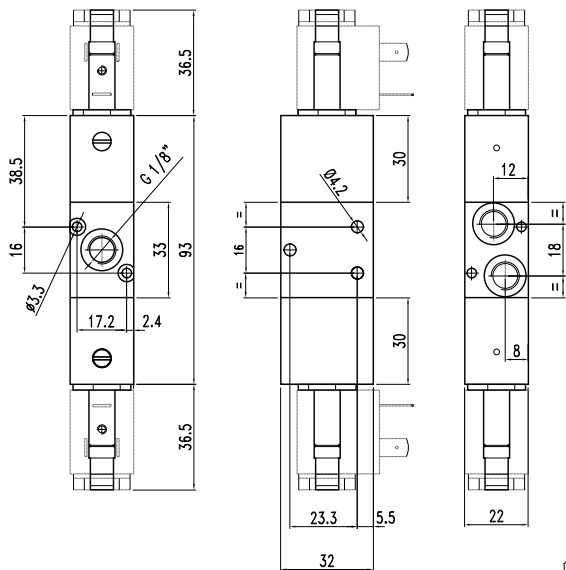
CODE: VY83ELMNA



1/8 - 3/2 NC monostable separate air supply
1/8 - 3/2 NF monostable alimentation séparée
1/8 - 3/2 NC monostabile alimentazione separata

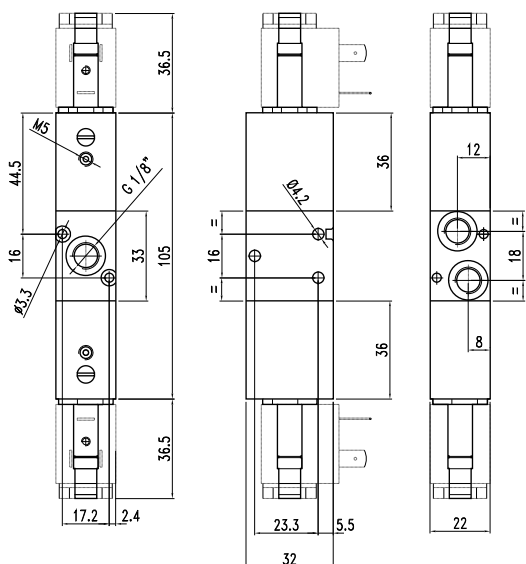
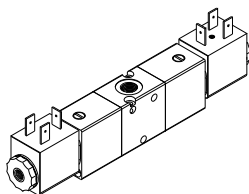
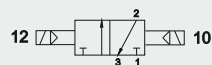
CODE: VY83EAMNC





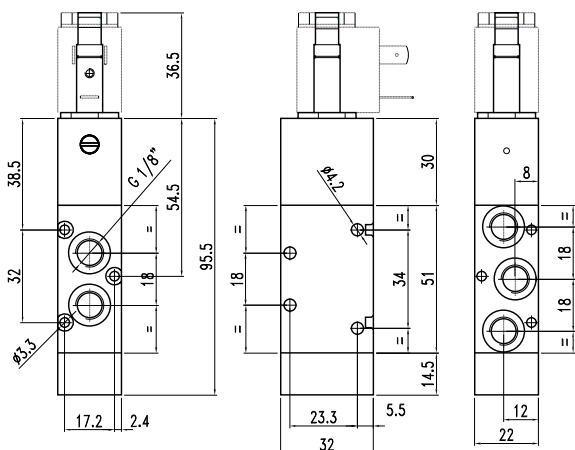
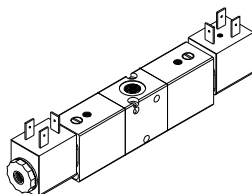
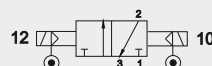
1/8 - 3/2 bistable
1/8 - 3/2 bistable
1/8 - 3/2 bistabile

CODE: VY83ELB00



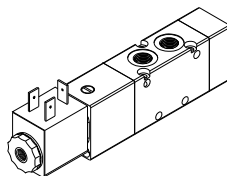
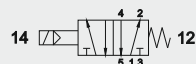
1/8 - 3/2 bistable separate air supply
1/8 - 3/2 bistable alimentation séparée
1/8 - 3/2 bistabile alimentazione separata

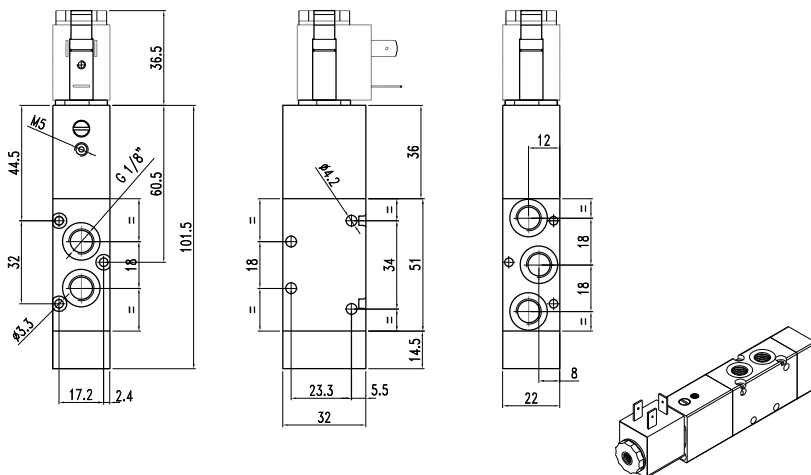
CODE: VY83EAB00



1/8 - 5/2 monostable
1/8 - 5/2 monostable
1/8 - 5/2 monostabile

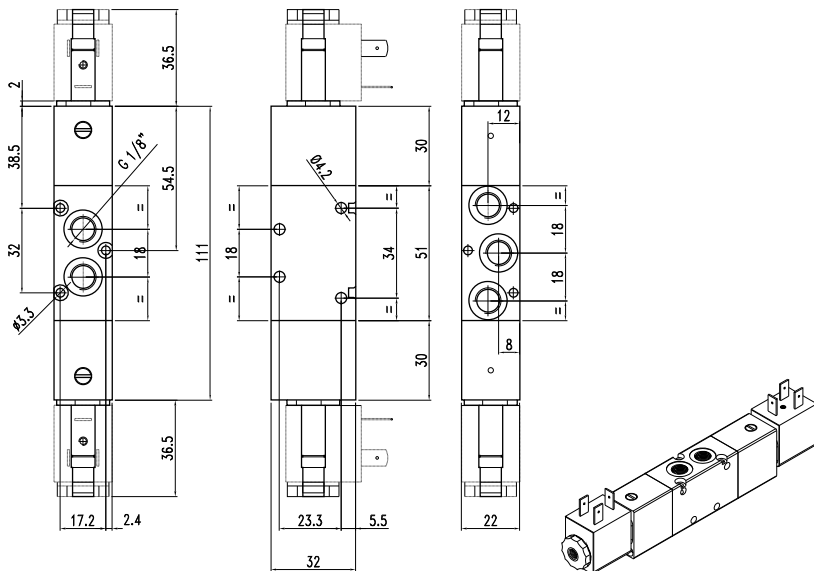
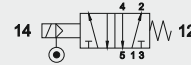
CODE: VY85ELM00





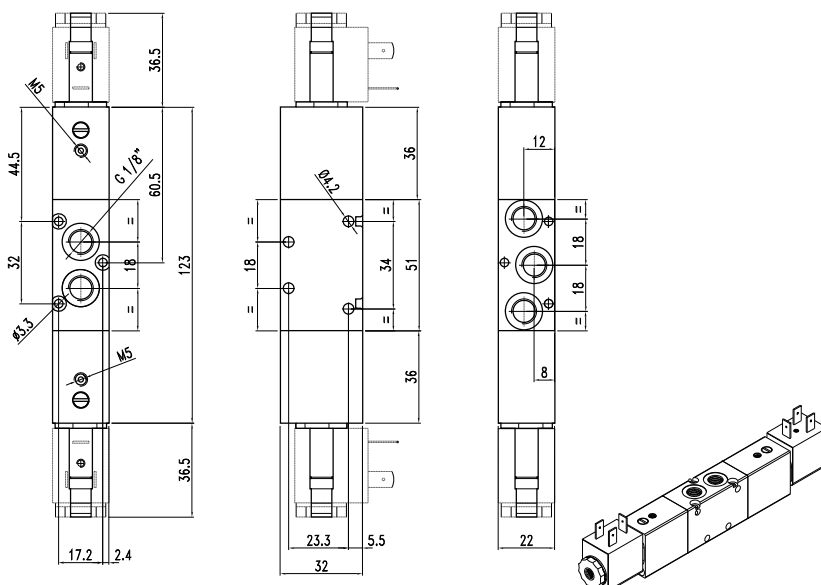
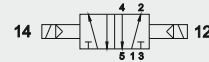
1/8 - 5/2 monostable separate air supply
1/8 - 5/2 monostable alimentation séparée
1/8 - 5/2 monostabile alimentazione separata

CODE: VY85EAM00



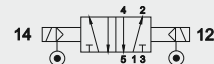
1/8 - 5/2 bistable
1/8 - 5/2 bistable
1/8 - 5/2 bistabile

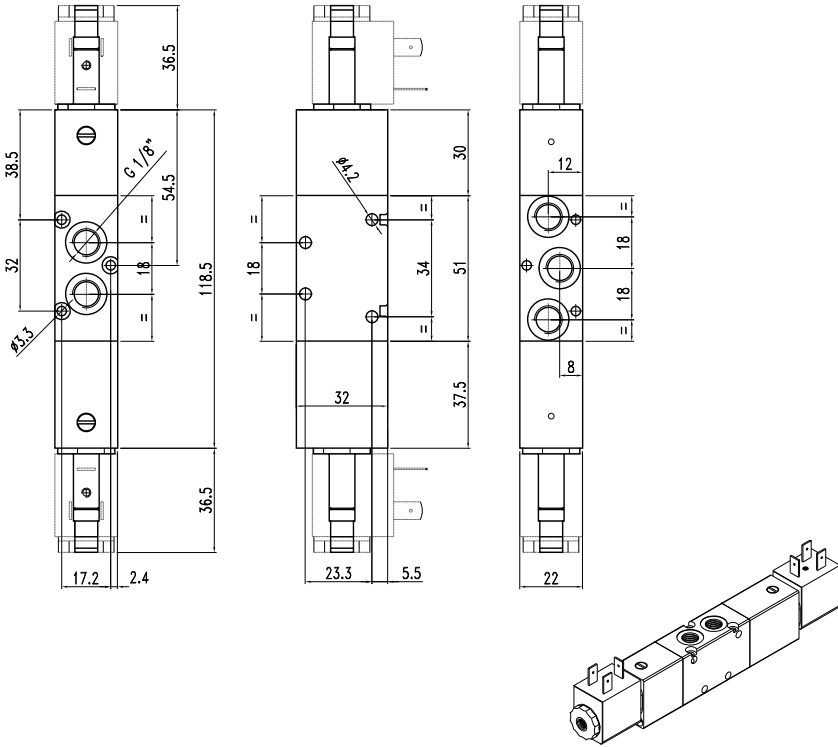
CODE: VY85ELB00



1/8 - 5/2 bistable separate air supply
1/8 - 5/2 bistable alimentation séparée
1/8 - 5/2 bistabile alimentazione separata

CODE: VY85EAB00





1/8 - 5/3 monostable
1/8 - 5/3 monostable
1/8 - 5/3 monostabile

CODE: WY86ELMCC

closed centres
centre fermé
centri chiusi



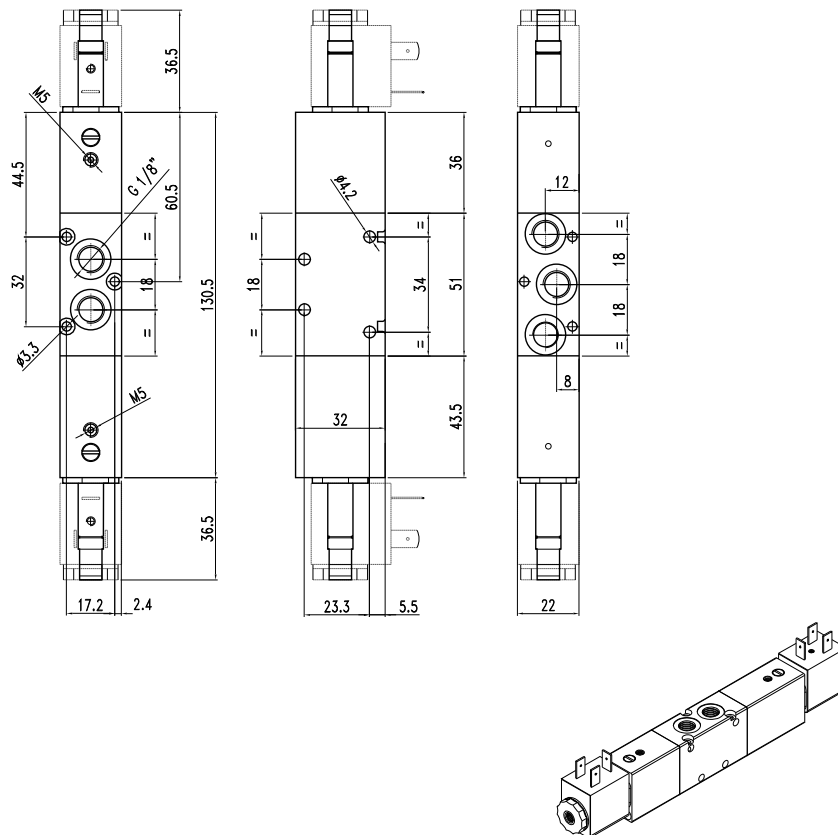
CODE: WY86ELMCA

open centres
centre ouvert
centri aperti



CODE: WY86ELMCP

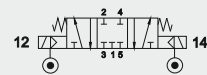
press. centres
centre en pression
centri in pressione



1/8 - 5/3 monostable separate air supply
1/8 - 5/3 monostable alimentation séparée
1/8 - 5/3 monostabile alimentazione separata

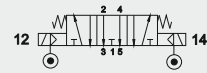
CODE: WY86EAMCC

closed centres
centre fermé
centri chiusi



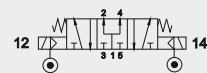
CODE: WY86EAMCA

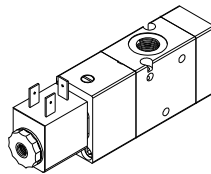
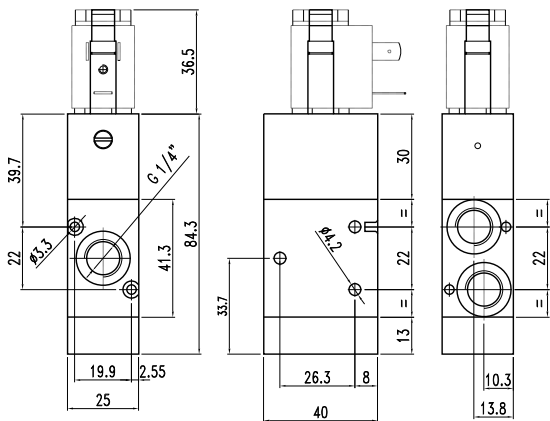
open centres
centre ouvert
centri aperti



CODE: WY86EAMCP

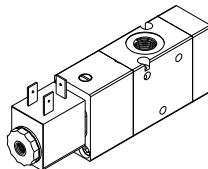
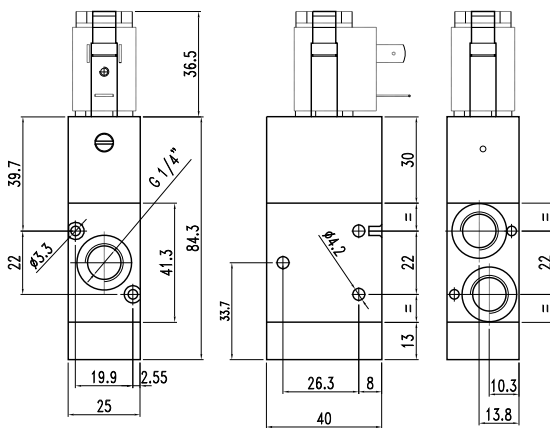
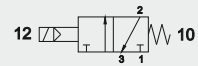
press. centres
centre en pression
centri in pressione





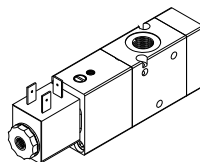
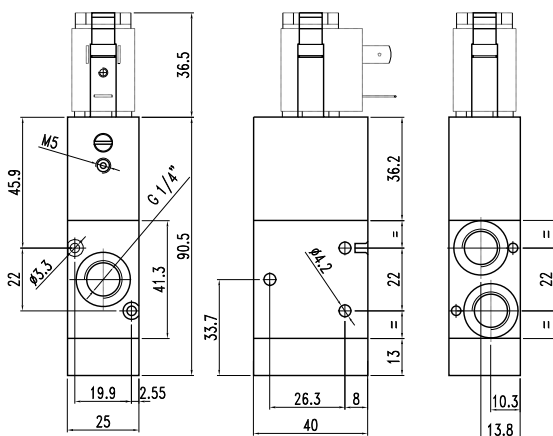
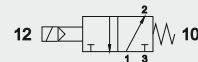
1/4 - 3/2 NC monostable
1/4 - 3/2 NF monostable
1/4 - 3/2 NC monostabile

CODE: VY43ELMNC



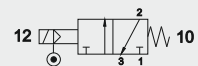
1/4 - 3/2 NO monostable
1/4 - 3/2 NO monostable
1/4 - 3/2 NA monostabile

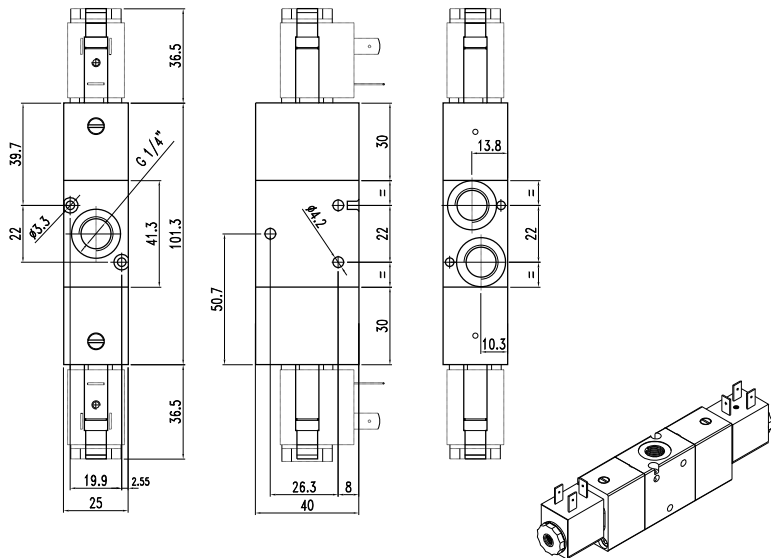
CODE: VY43ELMNA



1/4 - 3/2 NC monostable separate air supply
1/4 - 3/2 NF monostable alimentation séparée
1/4 - 3/2 NC monostable alimentazione separata

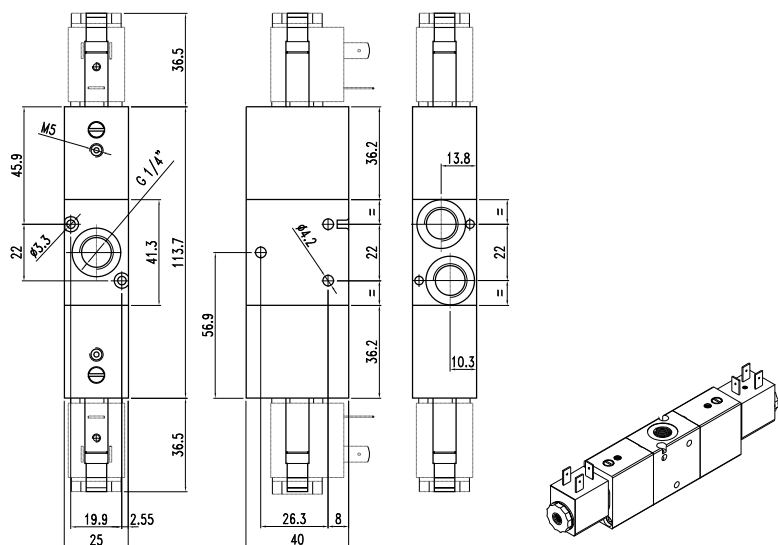
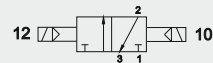
CODE: VY43EAMNC





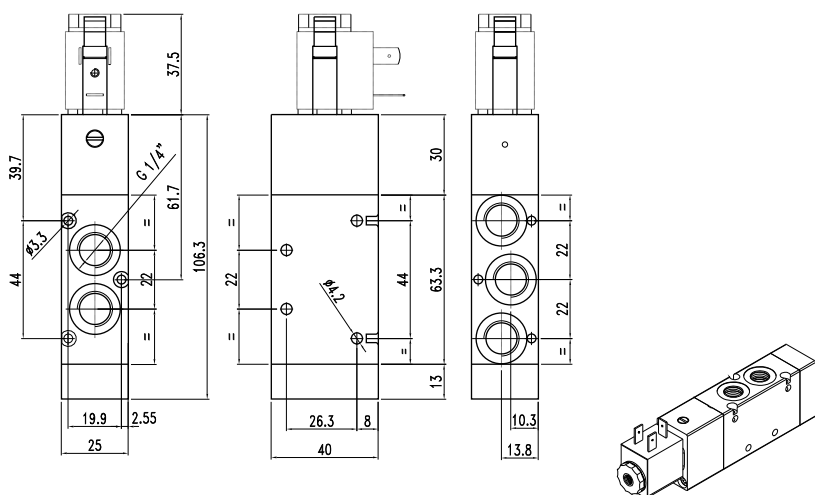
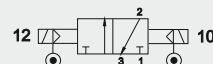
1/4 - 3/2 bistable
1/4 - 3/2 bistable
1/4 - 3/2 bistabile

CODE: VY43ELB00



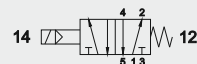
1/4 - 3/2 bistable separate air supply
1/4 - 3/2 bistable alimentation séparée
1/4 - 3/2 bistabile alimentazione separata

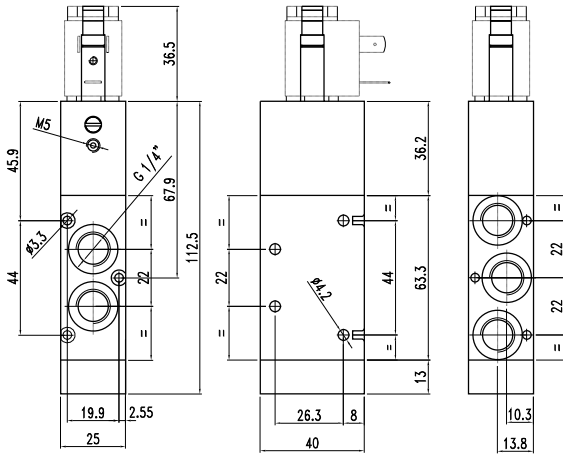
CODE: VY43EAB00



1/4 - 5/2 monostable
1/4 - 5/2 monostable
1/4 - 5/2 monostabile

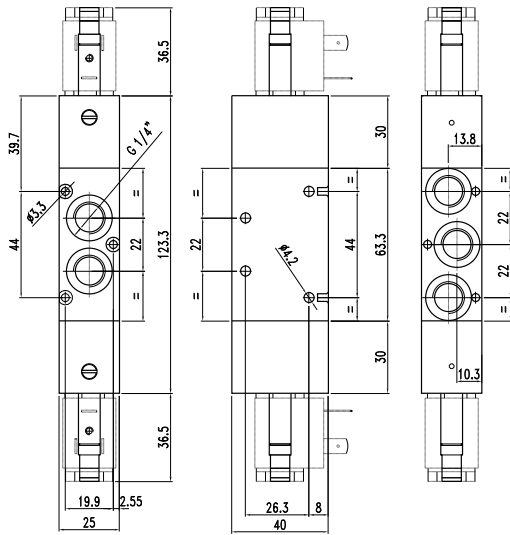
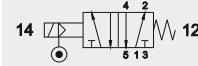
CODE: VY45ELM00





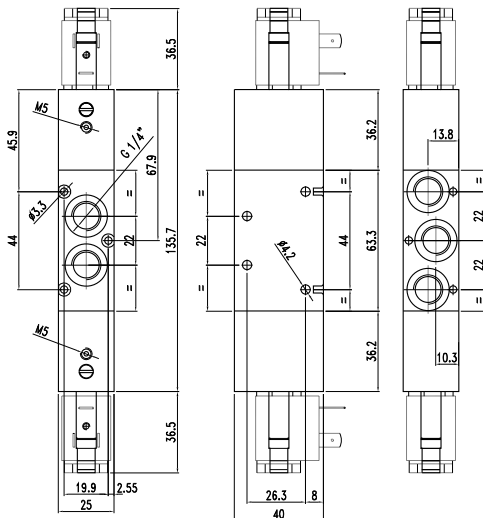
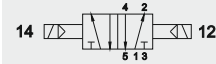
1/4 - 5/2 monostable separate air supply
1/4 - 5/2 monostable alimentation séparée
1/4 - 5/2 monostabile alimentazione separata

CODE: VY45EAM00



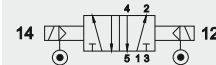
1/4 - 5/2 bistable
1/4 - 5/2 bistable
1/4 - 5/2 bistabile

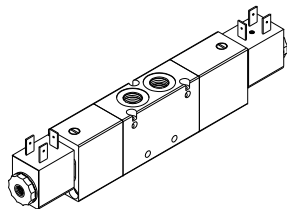
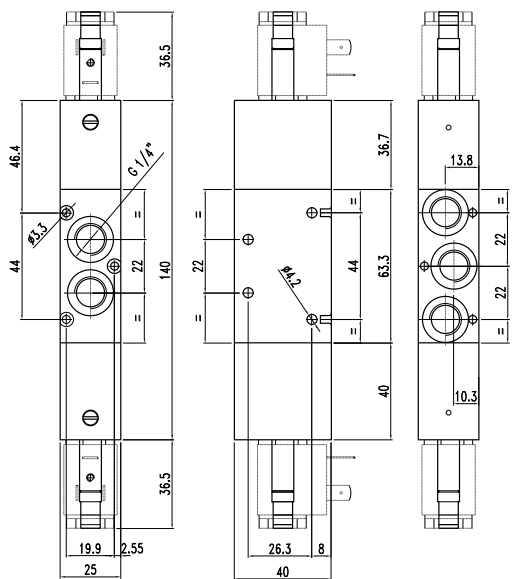
CODE: VY45ELB00



1/4 - 5/2 bistable separate air supply
1/4 - 5/2 bistable alimentation séparée
1/4 - 5/2 bistabile alimentazione separata

CODE: VY45EAB00





1/4 - 5/3 monostable
1/4 - 5/3 monostable
1/4 - 5/3 monostabile

CODE: VY46ELMCC

closed centres
centre fermé
centri chiusi



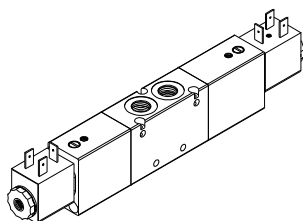
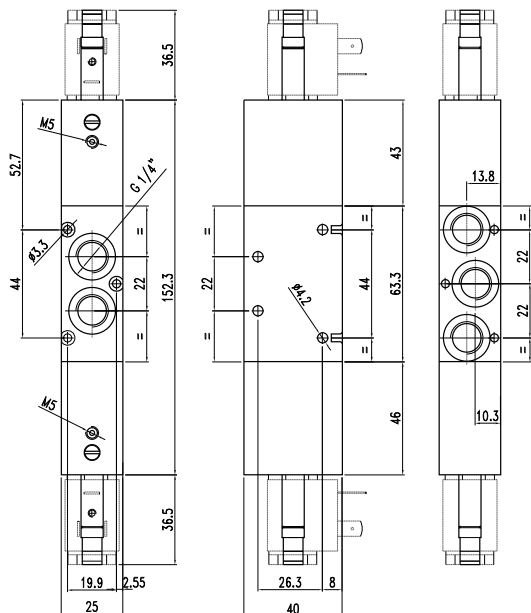
CODE: VY46ELMCA

open centres
centre ouvert
centri aperti



CODE: VY46ELMCP

press. centres
centre en pression
centri in pressione



1/4 - 5/3 monostable separate air supply
1/4 - 5/3 monostable alimentation séparée
1/4 - 5/3 monostabile alimentazione separata

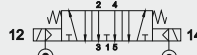
CODE: VY46EAMCC

closed centres
centre fermé
centri chiusi



CODE: VY46EAMCA

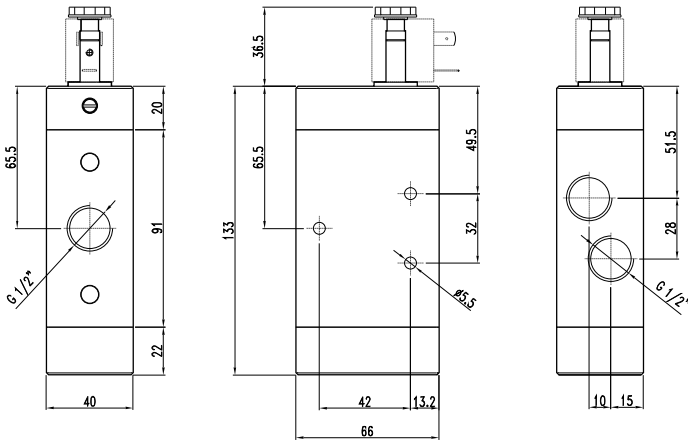
open centres
centre ouvert
centri aperti



CODE: VY46EAMCP

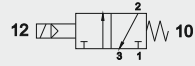
press. centres
centre en pression
centri in pressione





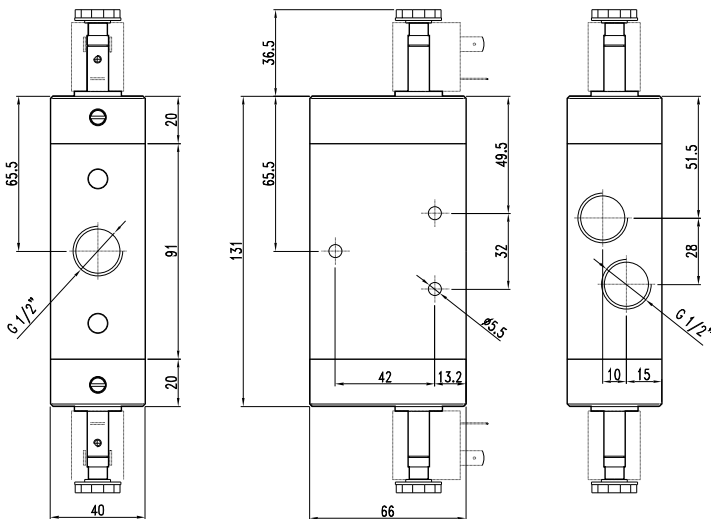
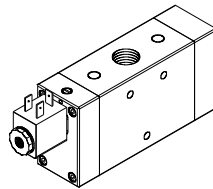
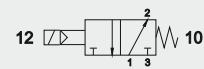
1/2 - 3/2 NC monostable
1/2 - 3/2 NF monostable
1/2 - 3/2 NC monostabile

CODE: VY23ELMNC



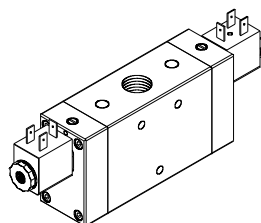
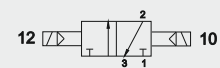
1/2 - 3/2 NO monostable
1/2 - 3/2 NO monostable
1/2 - 3/2 NA monostabile

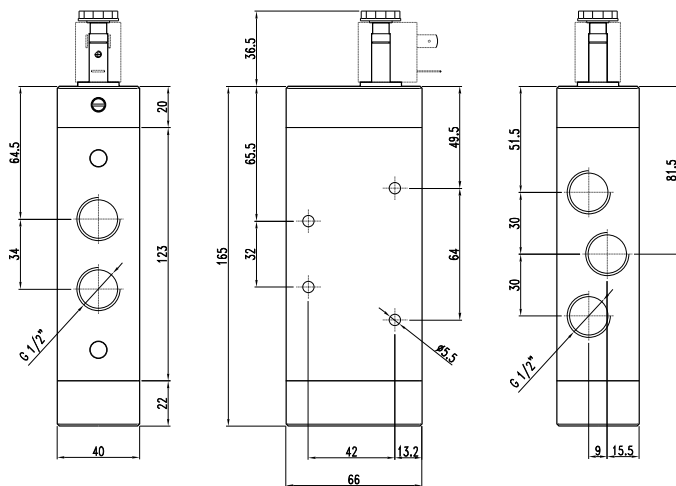
CODE: VY23ELMNA



1/2 - 3/2 bistable
1/2 - 3/2 bistable
1/2 - 3/2 bistabile

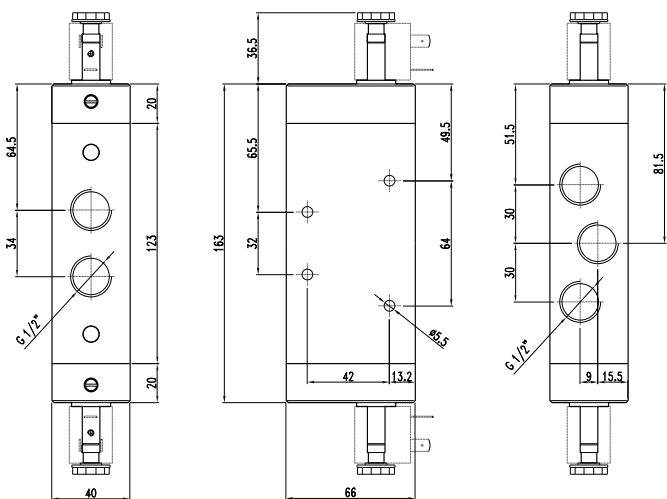
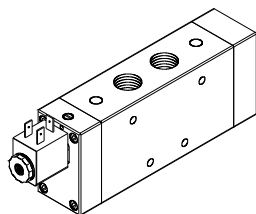
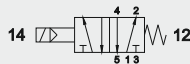
CODE: VY23ELB00





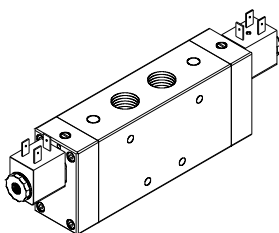
1/2 - 5/2 monostable
1/2 - 5/2 monostable
1/2 - 5/2 monostabile

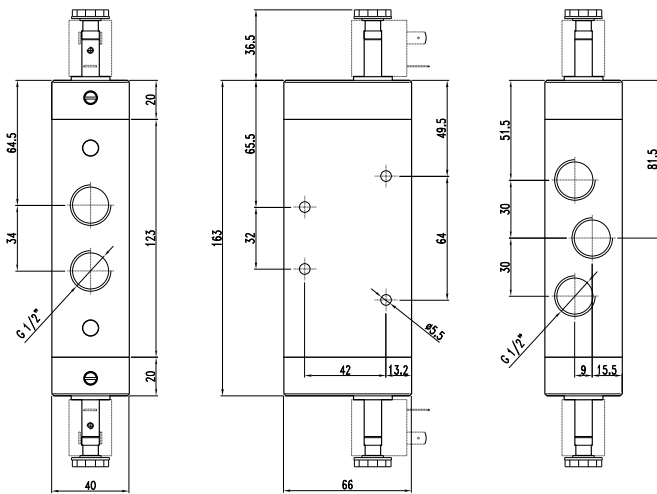
CODE: VY25ELM00



1/2 - 5/2 bistable
1/2 - 5/2 bistable
1/2 - 5/2 bistabile

CODE: VY25ELB00

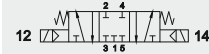




1/2 - 5/3 monostable
1/2 - 5/3 monostable
1/2 - 5/3 monostabile

CODE: VY26ELMCC

closed centres
centre fermé
centri chiusi



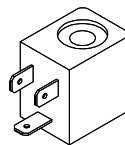
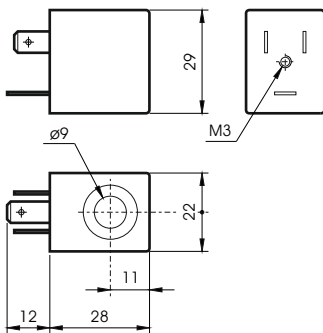
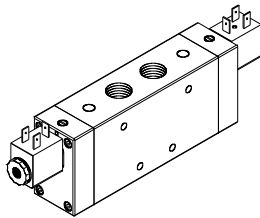
CODE: VY26ELMCA

open centres
centre ouvert
centri aperti



CODE: VY26ELMCP

press. centres
centre en pression
centri in pressione



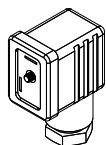
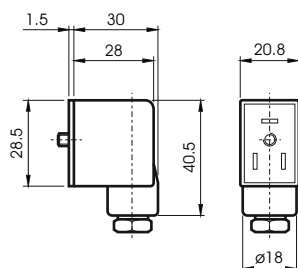
COILS
BOBINE
BOBINE

Power / Absorption / Assorbimento

CODE	Tension Tensione	Rated regime a regime	Inrush de sortie di spunto
BO4011024	24 VDC	3W	
BO4012024	24 VAC	5VA	7,5VA
BO4012110	110 VAC	5VA	7,5VA
BO4012220	220 VAC	5VA	7,5VA

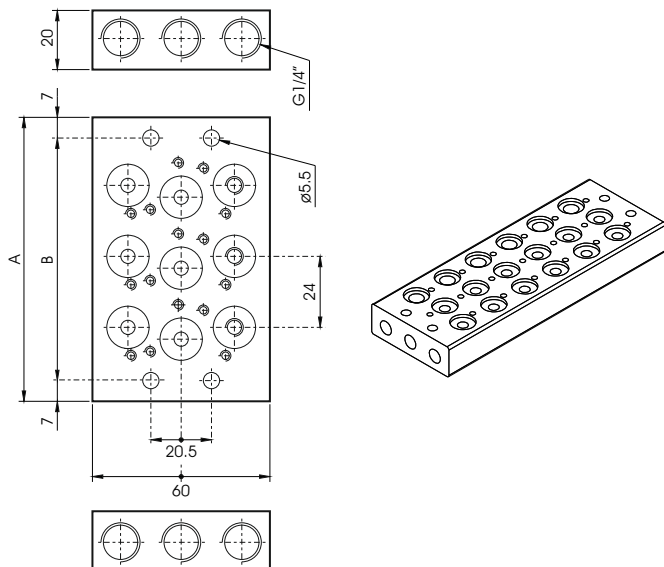
CARATTERISTICHE TECNICHE / TECHNICAL SPECIFICATIONS / CARACTERISTIQUES TECHNIQUES

Tension tolerance / Tolerance / Tolleranza di tensione	+10%
Protection with connector/Protection avec connecteur/Protezione con connettore	IP65
Max working temp. / Temperature max d'utilisation / Temp. max di esercizio	+50 C°
Duty cycle / Temps d'enclenchement / Inserimento	ED 100%



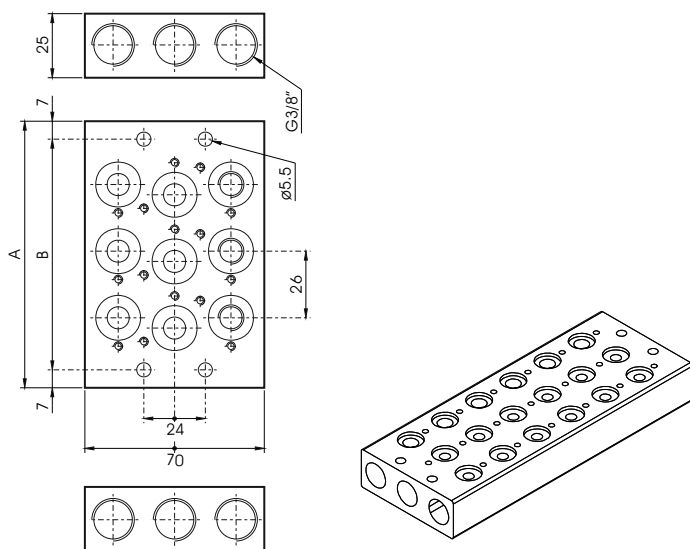
CONNECTORS
CONNECTEUR
CONNETTORI

CODE	
AR40696	STANDARD
VX0014	LED 24V
VX0015	LED 110V
VX0016	LED 220V
VX0017	LED+VDR 24V
VX0018	LED+VDR 110V
VX0019	LED+VDR 220V



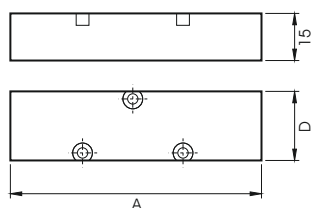
MANIFOLD FOR 1/8 VALVES
EMBASE MULTIPLE POUR VALVE 1/8
SOTTOBASE PER VALVOLE 1/8

CODE	STATIONS	A	B
SB407202	2	72	58
SB407203	3	96	82
SB407204	4	120	106
SB407205	5	144	130
SB407206	6	168	154
SB407207	7	192	178
SB407208	8	216	202
SB407209	9	240	226
SB407210	10	264	250



MANIFOLD FOR 1/4 VALVES
EMBASE MULTIPLE POUR VALVE EN 1/4
SOTTOBASE PER VALVOLE 1/4

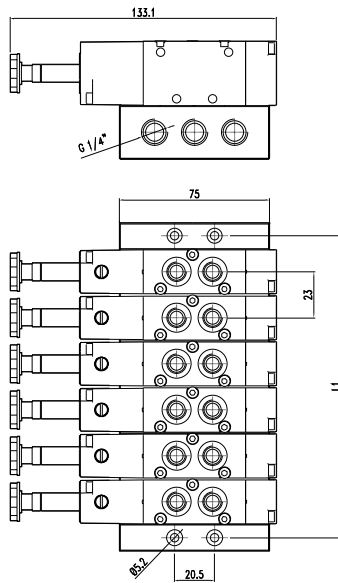
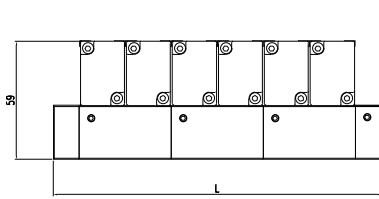
CODE	STATIONS	A	B
SB407302	2	78	64
SB407303	3	104	90
SB407304	4	130	116
SB407305	5	156	142
SB407306	6	182	168
SB407307	7	208	194
SB407308	8	234	220
SB407309	9	260	246
SB407310	10	286	272



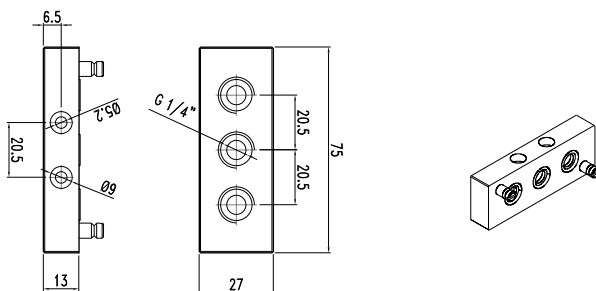
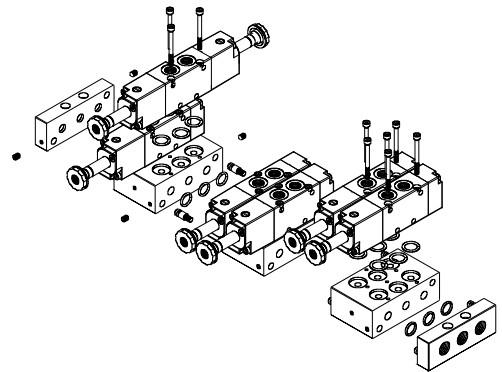
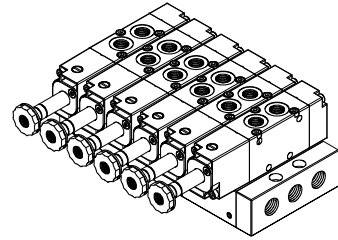
BLANKING PLATE
PLAQUE DE FERMETURE
PIASTRINA DI CHIUSURA

CODE		A	D
SB40720004	1/8	60	22
SB40730004	1/4	70	25

1/8 MODULAR MANIFOLD / EMBASE MODULAIRE 1/8 / BASE MODULARE 1/8

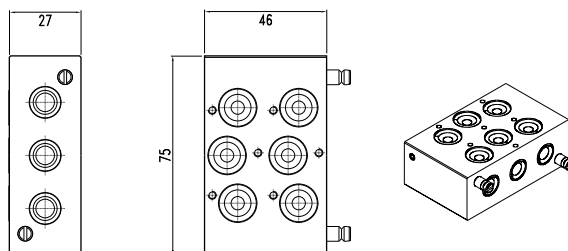


N° POS	L	L1
2	72	59
4	118	105
6	164	151
8	210	197
10	256	243
12	302	289



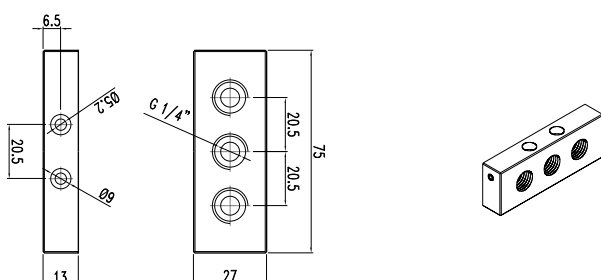
TERMINAL RIGHT 1/8
TERMINAL DROITE 1/8
TERMINALE DESTRO 1/8

CODE: SB407213



MODULAR MANIFOLD 1/8
BASE MODULAIRE 1/8
BASE MODULARE 1/8

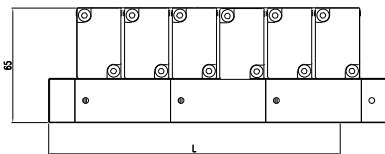
CODE: SB407211



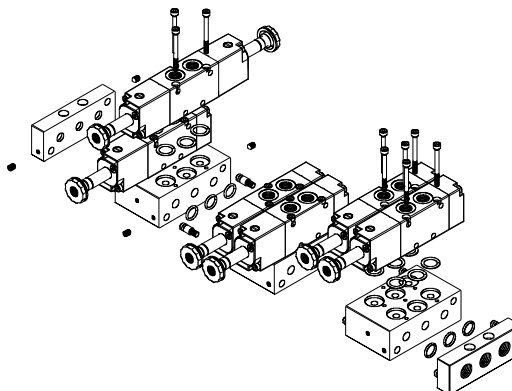
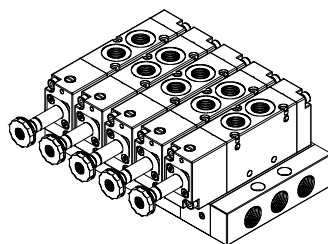
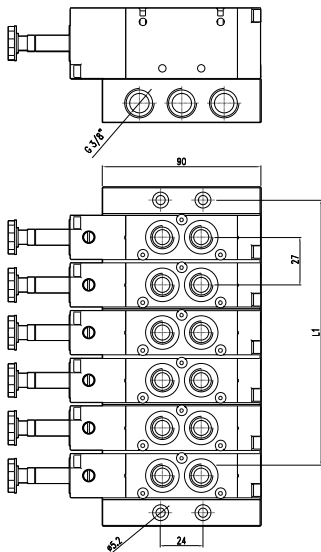
TERMINAL LEFT 1/8
TERMINAL GAUCHE 1/8
TERMINALE SINISTRO 1/8

CODE: SB407212

1/4 MODULAR MANIFOLD / EMBASE MODULAIRE 1/4 / BASE MODULARE 1/4

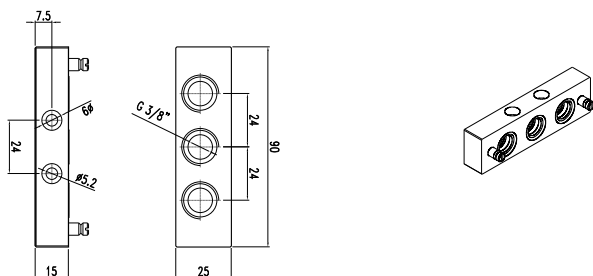


N° POS	L	L1
2	84	69
4	138	123
6	192	177
8	246	231
10	300	285
12	354	339



Valves / Valves / Valvoles

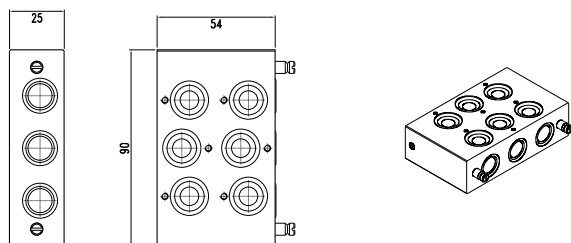
SOLENOID ACTUATED VALVES
ELECTROVALVE / VALVOLE AD AZIONAMENTO ELETTRICO



TERMINAL RIGHT 1/4
TERMINAL DROITE 1/4
TERMINALE DESTRO 1/4

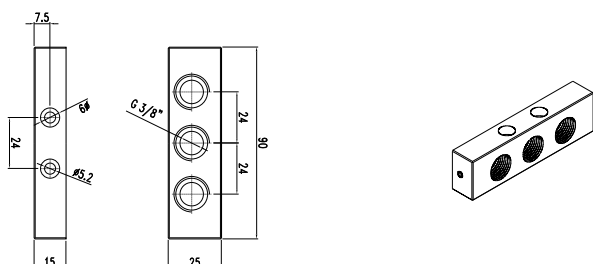
CODE: SB407313

SOLENOID ACTUATED VALVES
ELECTROVALVE / VALVOLE AD AZIONAMENTO ELETTRICO



MODULAR MANIFOLD 1/4
BASE MODULAIRE 1/4
BASE MODULARE 1/4

CODE: SB407311



TERMINAL LEFT 1/4
TERMINAL GAUCHE 1/4
TERMINALE SINISTRO 1/4

CODE: SB407312